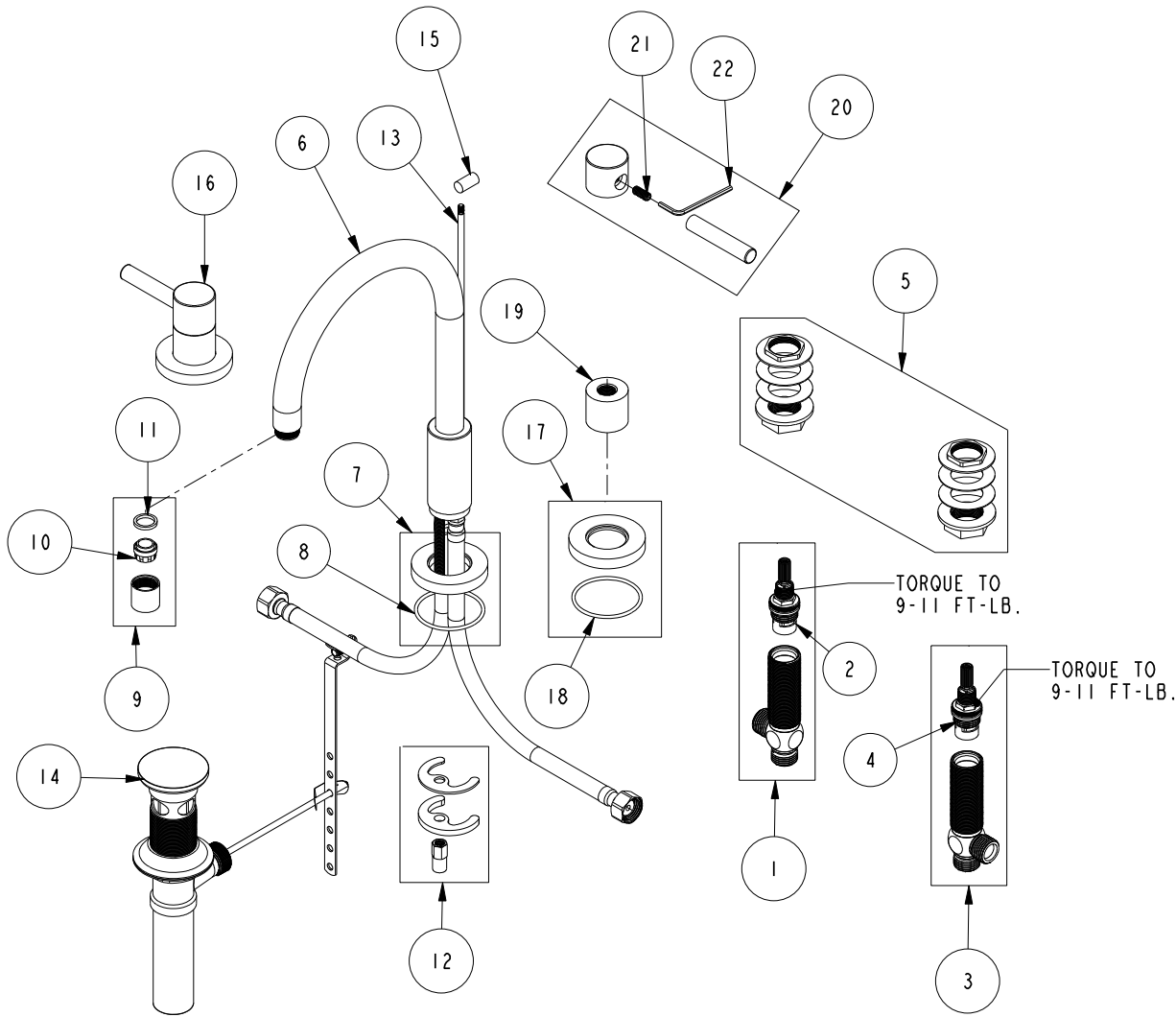


REPLACEMENT PARTS



ITEM	PT/ASSY	SPECIFY FINISH	DESCRIPTION
1	1-527		W/S CART/BODY ASM (HOT)
2	1-002		W/S CARTRIDGE - HOT
3	1-526		W/S CART/BODY ASM (COLD)
4	1-001		W/S CARTRIDGE - COLD
5	1-027		WIDE SPREAD MOUNTING HARDWARE
6	3-233	YES	W/S SPOUT ASM
7	2-101	YES	SPOUT BASE RING ASM
8	91753		O-RING, # 2-136, EP, 50 DURO - GREY
9	2-693	YES	AERATOR ASM
10	12403		AERATOR INSERT, Jr. SIZE, 1.2 GPM
11	91500		GSKT, .578 ID X .728 OD X .102 THK EPDM
12	1-491		SPOUT MOUNTING KIT
13	10288	YES	3/16" POP UP ROD
14	325	YES	POP UP ASSEMBLY
15	10827	YES	POP-UP KNOB
16	3-255	YES	TRIM KIT - HANDLE / ES
17	2-100	YES	ESCUTCHEON - ASSEMBLY
18	91753		O-RING, # 2-136, EP, 50 DURO - GREY
19	10620	YES	BONNET
20	2-299	YES	LEVER HANDLE
21	92005		SCRW, 1/4-20 X 5/8 SKT HD CUP PT SS
22	92422		HEX KEY, 1/8" ALLOY STEEL

W/S DECK FAUCET
1500

REV E EN-4728 11/03/23 APPROVED RS

NEWPORT BRASS.

t: 949.417.5207 | www.newportbrass.com