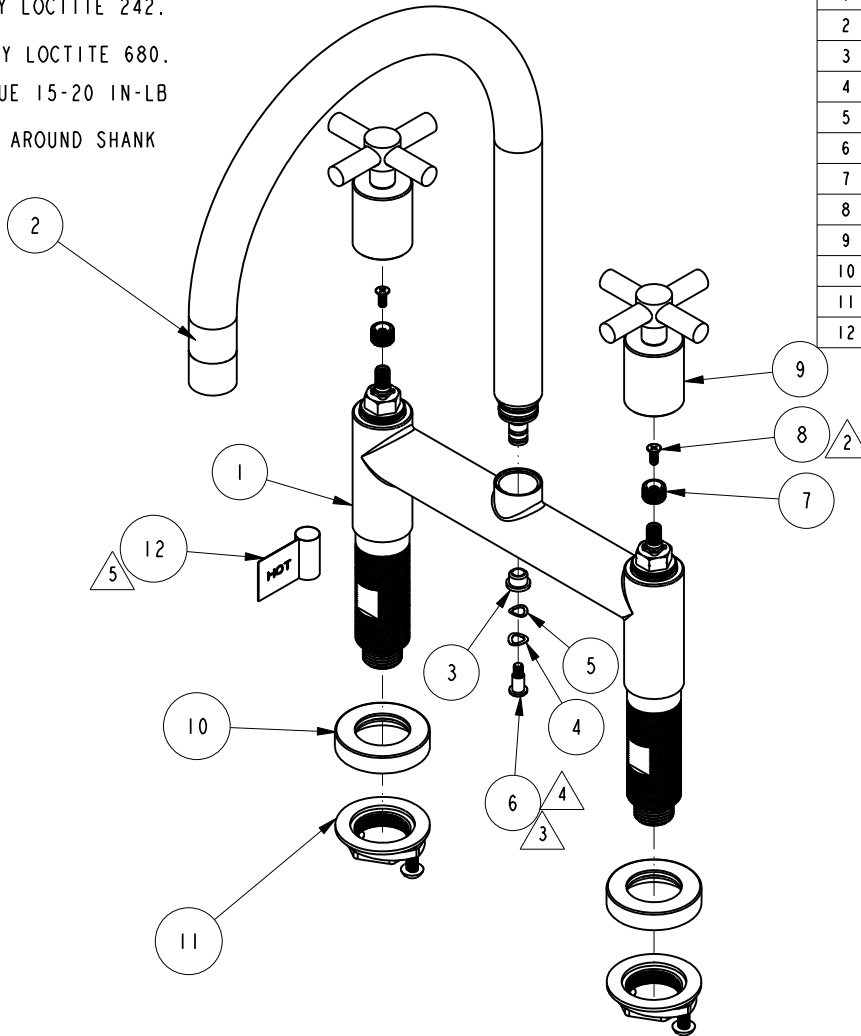


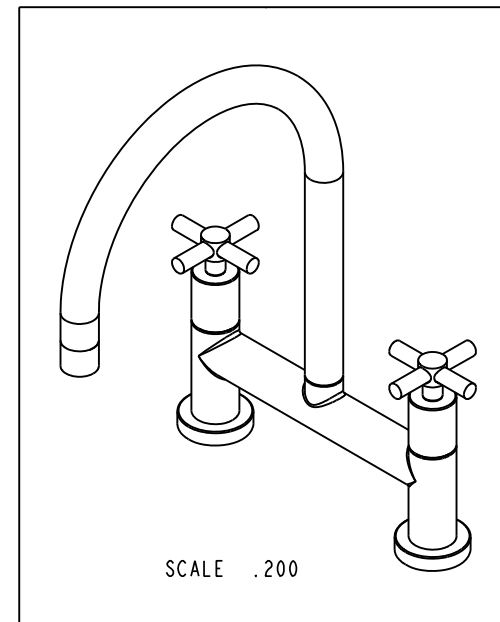
NOTES:

- (NI) 1. FIT / FORM / FUNCTION SHALL FOLLOW PS-E.008.
- 2. APPLY LOCTITE 242.
- 3. APPLY LOCTITE 680.
- 4. TORQUE 15-20 IN-LB
- 5. WRAP AROUND SHANK



BILL OF MATERIAL (CURRENT LEVEL)

ITEM	PT/ASSY	DESCRIPTION	TYPE	QTY.
1	20-369	KITCHEN BRIDGE BODY ASM	ASSEMBLY	1
2	3-624	SPOUT ASSEMBLY	ASSEMBLY	1
3	91783	FLANGED SLEEVE BEARING	PART	1
4	92883	WSHR, .27 ID X .42 OD X .008 THK, WAVE, SPRING STEEL	PART	1
5	92293	WSHR, .24 ID X .39 OD X .01 THK, WAVE, SPRING STEEL	PART	1
6	92884	SCRW, 10-32 X 3/8 SKT CAP LOW HD SS	PART	1
7	12975	ADAPTER	PART	2
8	92035	SCRW, M4 X .7 X 10 PHL FLT HD SS	PART	2
9	20-354	CROSS HANDLE ASM	ASSEMBLY	2
10	20-368	ESCUTCHEON ASM	ASSEMBLY	2
11	1-393	1-1/8 18 UNEF MOUNTING KIT	ASSEMBLY	2
12	98044	LABEL - HOT	PART	1



ZONE	REV	DESCRIPTION	DATE	APPROVED
-	B	EN-3866	05/09/19	J.M.
-	A	EN-3818	02/25/19	J.M.
-	-	EN-3364	09/24/18	J.M.

COPYRIGHT 2005 BRASSTECH, INC. THESE DRAWINGS AND THE DESIGNS DEPICTED HEREIN ARE THE PROPRIETARY PROPERTY OF BRASSTECH. ANY USE OR REPRODUCTION IS SUBJECT TO THE EXPRESS APPROVAL OF BRASSTECH. UNAUTHORIZED USE IS STRICTLY PROHIBITED. ALL RIGHTS RESERVED.

TESTING	ASSEMBLY	PLATING	POLISHING	MACHINING	TOOLING FIXTURE #
-	-	-	-	-	
					REMOVE ALL BURRS AND SHARP EDGES

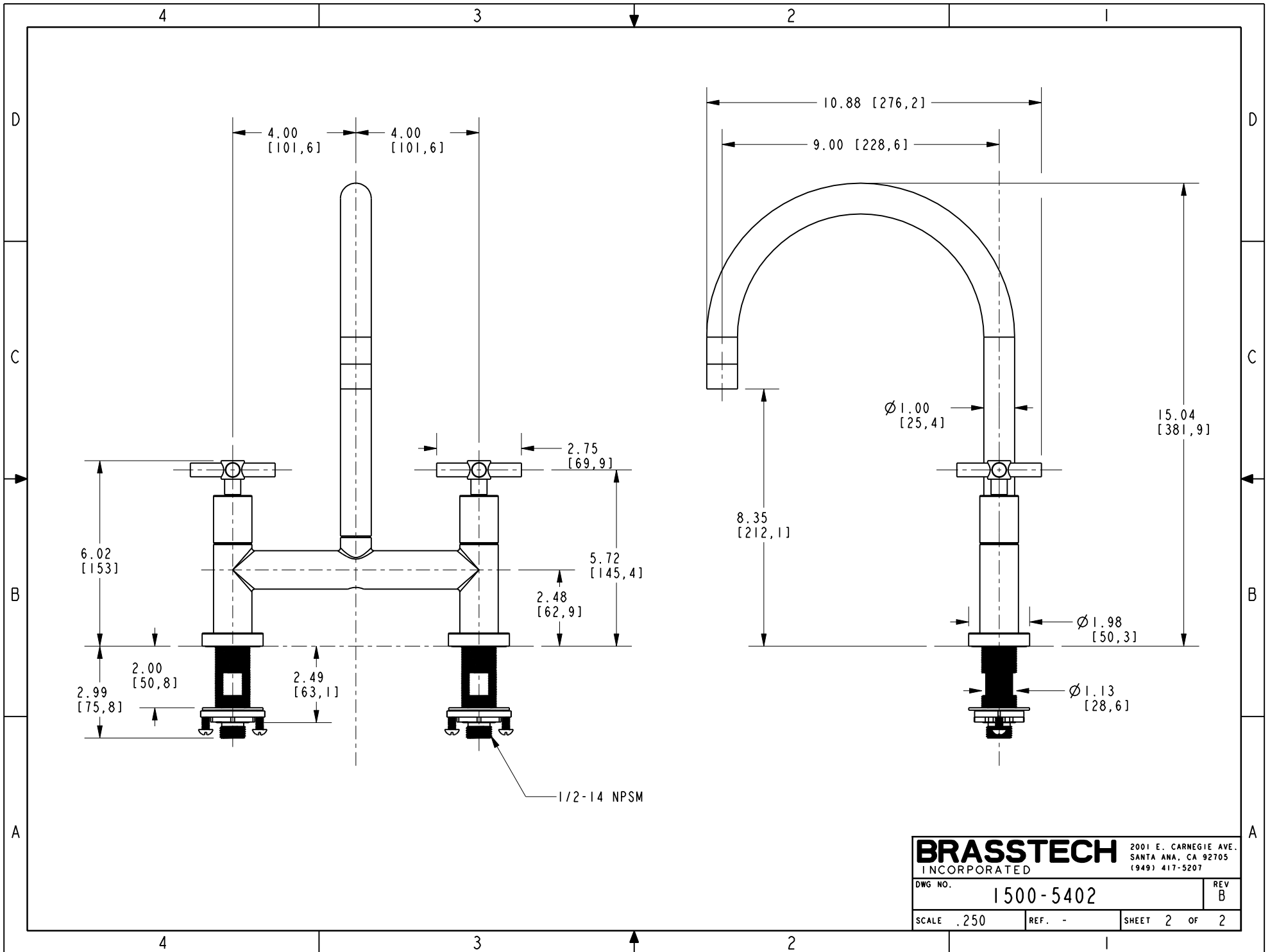
UNITS ARE: INCHES [MM]	TOLERANCES ARE:
FRACTIONS DECIMALS	ANGLES
±1/16"	.X ±.1 (2.5) ±1°
	.XX ±.06 (1.5)
(X.XXX) DENOTES CRITICAL DIMS. ALL THREADS ARE CRITICAL	
DRAWN	JINSON 09/24/18
CHECKED	J.M. 09/24/18
APPROVED	J.M. 09/24/18

BRASSTECH INCORPORATED
 2001 CARNEGIE AVE.
 SANTA ANA, CA 92705
 (949) 417-5207

KITCHEN BRIDGE FAUCET

DWG NO. **1500-5402** REV B

SCALE .250 REF. - SHEET 1 OF 2



BRASSTECH		2001 E. CARNEGIE AVE.	
INCORPORATED		SANTA ANA, CA 92705	
DWG NO. 1500-5402		REV B	
SCALE .250	REF. -	SHEET 2 OF 2	