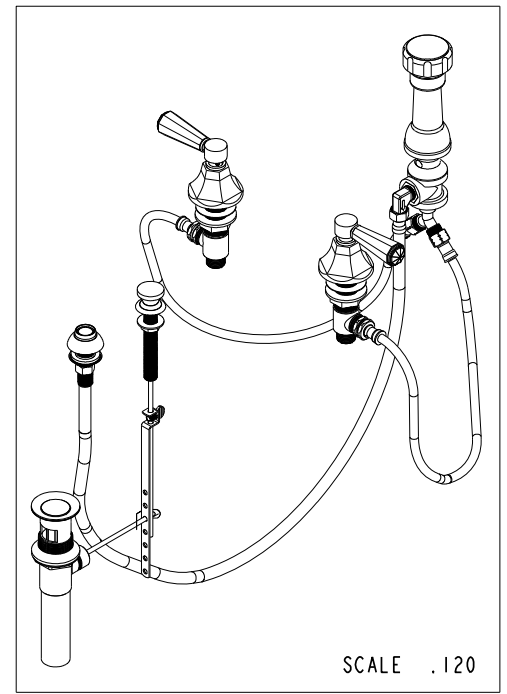


BILL OF MATERIAL (CURRENT LEVEL)

ITEM	PT/ASSY	DESCRIPTION	TYPE	QTY.
1	2-159	POP-UP ROD GUIDE ASSEMBLY	ASSEMBLY	1
2	2-236	DOUCHE SPRAY ASSEMBLY	ASSEMBLY	1
3	325	POP UP ASSEMBLY	ASSEMBLY	1
4	10960	HEX ESCUTCHEON	PART	2
5	1-542	VALVE KIT - BIDET	ASSEMBLY	1
6	10961	SMOOTH POP - UP KNOB	PART	1
7	10288	3/16" POP UP ROD	PART	1
8	2-235	BIDET DIVERTER / V. BRE	ASSEMBLY	1
9	2-876	CRYSTAL HANDLE LEVER ASM	ASSEMBLY	2
10	91386	O-RING, #2-034, EPDM, 65-75 DURO	PART	2



COPYRIGHT 2005 BRASSTECH, INC. THESE DRAWINGS AND THE DESIGNS DEPICTED HEREIN ARE THE PROPRIETARY PROPERTY OF BRASSTECH. ANY USE OR REPRODUCTION IS SUBJECT TO THE EXPRESS APPROVAL OF BRASSTECH. UNAUTHORIZED USE IS STRICTLY PROHIBITED. ALL RIGHTS RESERVED.

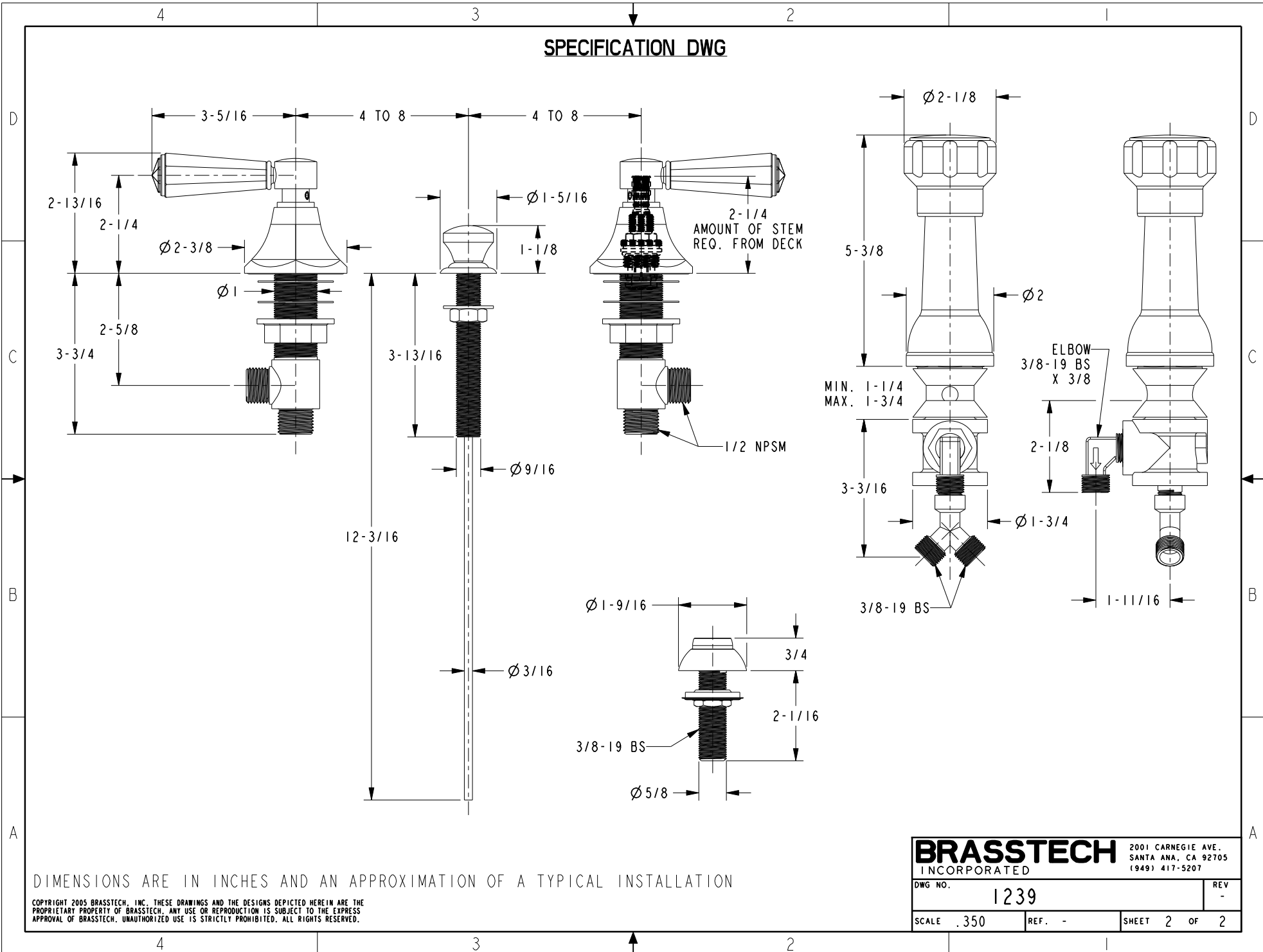
BRASSTECH
INCORPORATED

2001 E. CARNEGIE AVE.
SANTA ANA, CA 92705
(949) 417-5207

BIDET SET

ASSY. NO.	1239	-	-	-
SCALE	.200	REF.	-	EN-2415
SHEET	1	OF	2	06/11/13
REV		REV	DESC	DATE

SPECIFICATION DWG



DIMENSIONS ARE IN INCHES AND AN APPROXIMATION OF A TYPICAL INSTALLATION

COPYRIGHT 2005 BRASSTECH, INC. THESE DRAWINGS AND THE DESIGNS DEPICTED HEREIN ARE THE PROPRIETARY PROPERTY OF BRASSTECH. ANY USE OR REPRODUCTION IS SUBJECT TO THE EXPRESS APPROVAL OF BRASSTECH. UNAUTHORIZED USE IS STRICTLY PROHIBITED. ALL RIGHTS RESERVED.

BRASSTECH		2001 CARNEGIE AVE. SANTA ANA, CA 92705 (949) 417-5207	
DWG NO.	1239	REV	-
SCALE	.350	REF.	-
SHEET		2	OF 2