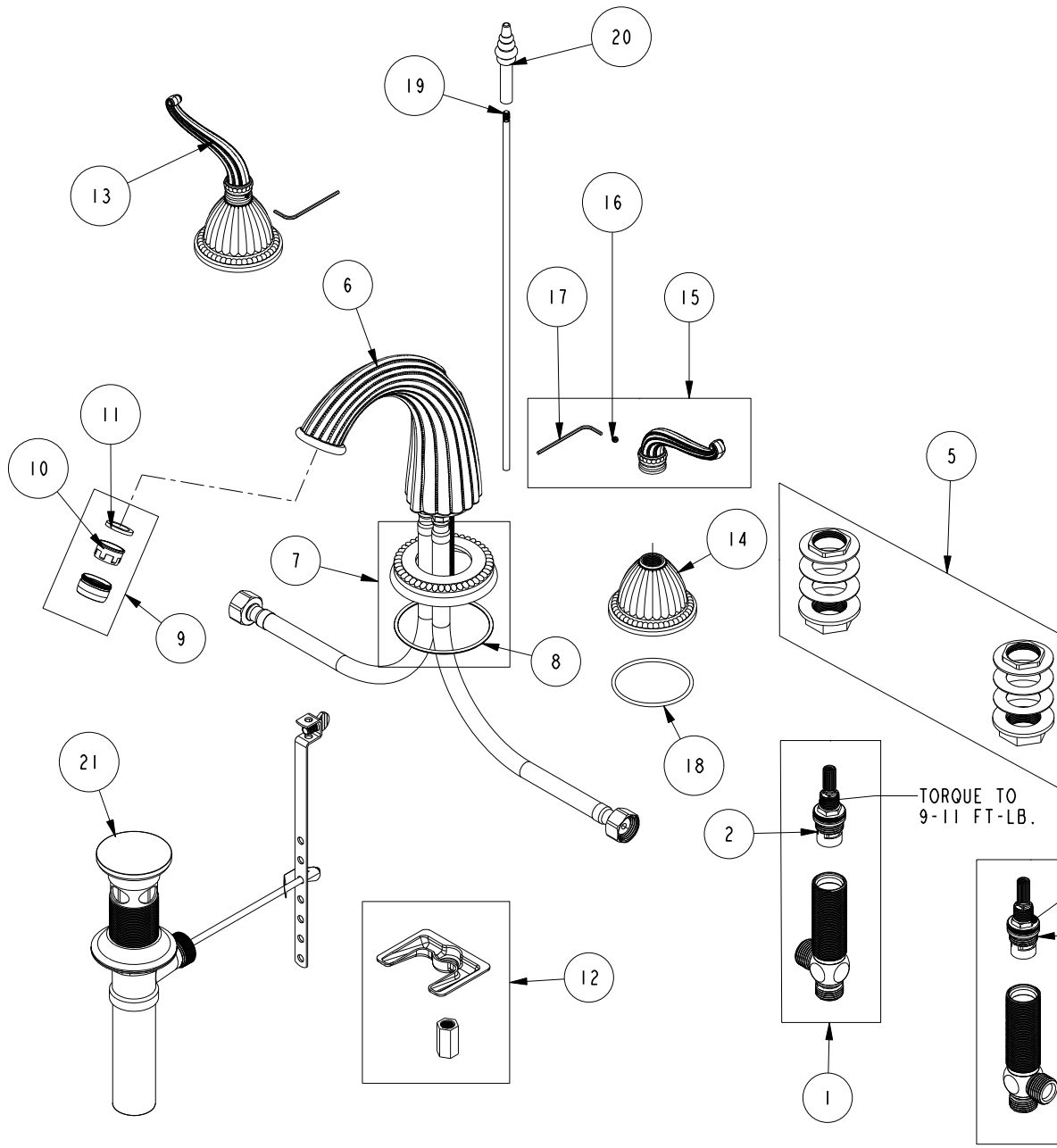


REPLACEMENT PARTS



ITEM	PT/ASSY	SPECIFY FINISH	DESCRIPTION
1	1-527		W/S CART/BODY ASM (HOT)
2	1-002		W/S CARTRIDGE - HOT
3	1-526		W/S CART/BODY ASM (COLD)
4	1-001		W/S CARTRIDGE - COLD
5	1-027		WIDE SPREAD MOUNTING HARDWARE
6	3-342	YES	SPOUT ASSEMBLY
7	20-725	YES	ESCUTCHEON ASM
8	91775		O-RING, #2-147, EPDM, 50 DURO - GREY
9	2-627	YES	AERATOR ASM
10	12404		AERATOR INSERT, STD SIZE, 1.2 GPM
11	91014		WSHR, .59 ID X .84 OD X .095 THK, FLT, RUBBER NSF 61
12	1-514		SPOUT MOUNTING KIT ASM
13	3-248	YES	TRIM KIT - HANDLE / ESC
14	12172	YES	ESCUTCHEON, 880 SERIES
15	2-285	YES	HANDLE ASM
16	92000		SCREW 8 - 32 X 1/8 SS
17	10192		HEX KEY TOOL, #8 5/64
18	91751		O-RING, #2-139, 50 DURO
19	10288	YES	3/16" POP UP ROD
20	10973	YES	POP-UP KNOB W/RINGS
21	325	YES	POP UP ASSEMBLY

**WIDESPREAD FAUCET
1090**

REV J EN-4728 10/23/23 APPROVED RS

NEWPORT BRASS.

t: 949.417.5207 | www.newportbrass.com