

4

3

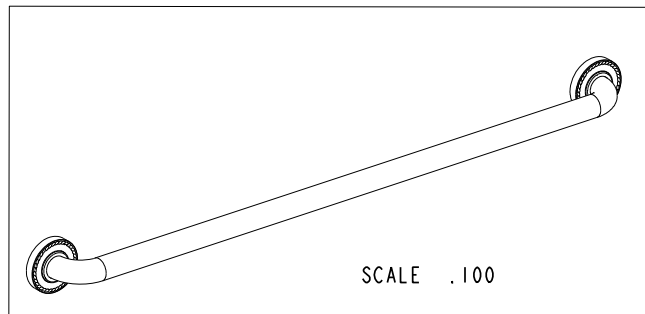
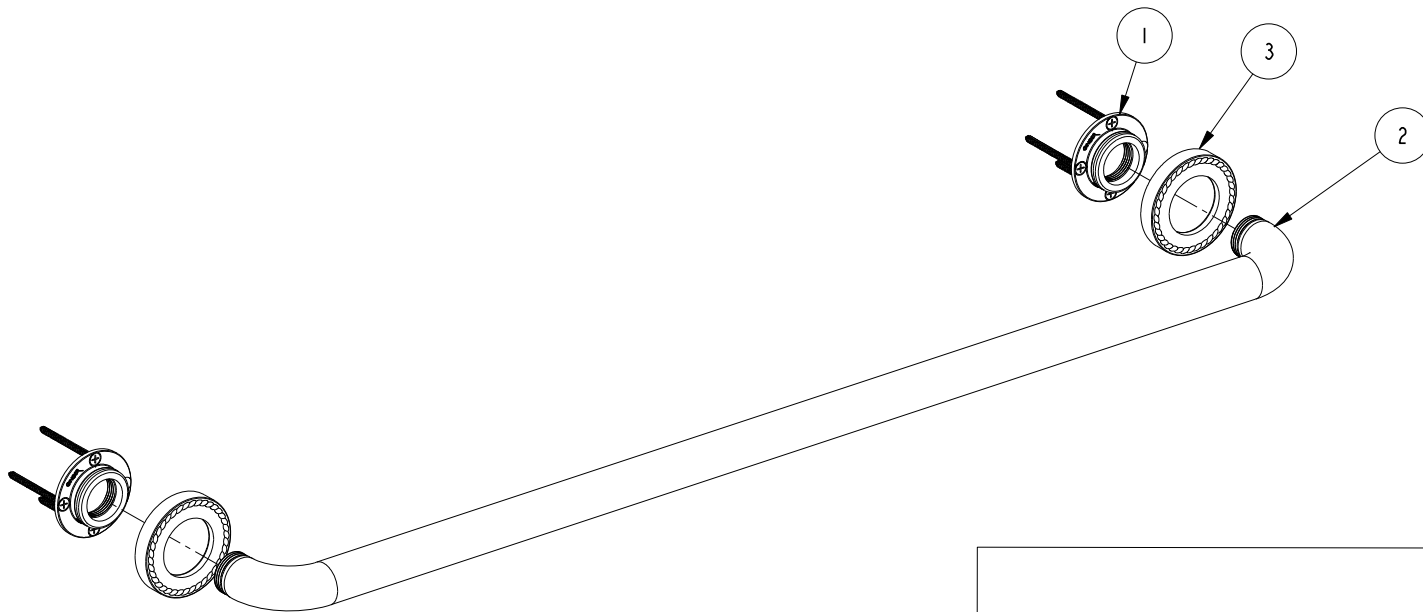
2

NOTES:

(N1) 1. FIT / FORM / FUNCTION SHALL FOLLOW PS-E.008.

BILL OF MATERIAL (CURRENT LEVEL)

| ITEM | PT/ASSY | DESCRIPTION                     | TYPE     | QTY. |
|------|---------|---------------------------------|----------|------|
| 1    | 20-287  | GRAB BAR MOUNTING HARDWARE PACK | ASSEMBLY | 2    |
| 2    | 5085    | GRAB BAR AND ADAPTER ASSY       | ASSEMBLY | 1    |
| 3    | 1572    | DECORATIVE RING                 | PART     | 2    |



COPYRIGHT 2005 BRASSTECH, INC.  
 THESE DRAWINGS AND THE DESIGNS  
 DEPICTED HEREIN ARE THE PROPRIETARY  
 PROPERTY OF BRASSTECH. ANY USE  
 OR REPRODUCTION IS SUBJECT TO  
 THE EXPRESS APPROVAL OF BRASSTECH.  
 UNAUTHORIZED USE IS STRICTLY  
 PROHIBITED. ALL RIGHTS RESERVED.

| -    | -   | EN-3279b    | 07/13/17 | J.M.     |
|------|-----|-------------|----------|----------|
| ZONE | REV | DESCRIPTION | DATE     | APPROVED |

|                   |                                  |             |         |   |
|-------------------|----------------------------------|-------------|---------|---|
| TESTING           | -                                | -           | -       | - |
| ASSEMBLY          | -                                | -           | -       | - |
| PLATING           | -                                | -           | -       | - |
| POLISHING         | -                                | NEXT ASSY   | USED ON | - |
| MACHINING         | -                                | APPLICATION |         |   |
| TOOLING FIXTURE # | REMOVE ALL BURRS AND SHARP EDGES |             |         |   |

UNITS ARE: INCHES [MM]  
 TOLERANCES ARE:  
 FRACTIONS DECIMALS ANGLES  
 $\pm 1/16"$  .X  $\pm .1$  [2.5]  $\pm 1^\circ$   
 .XX  $\pm .06$  [1.5]  
 (X.XXX) DENOTES CRITICAL DIMS.  
 ALL THREADS ARE CRITICAL

|          |      |          |
|----------|------|----------|
| DRAWN    | R.S. | 07/13/17 |
| CHECKED  | J.M. | 07/13/17 |
| APPROVED | J.M. | 07/13/17 |

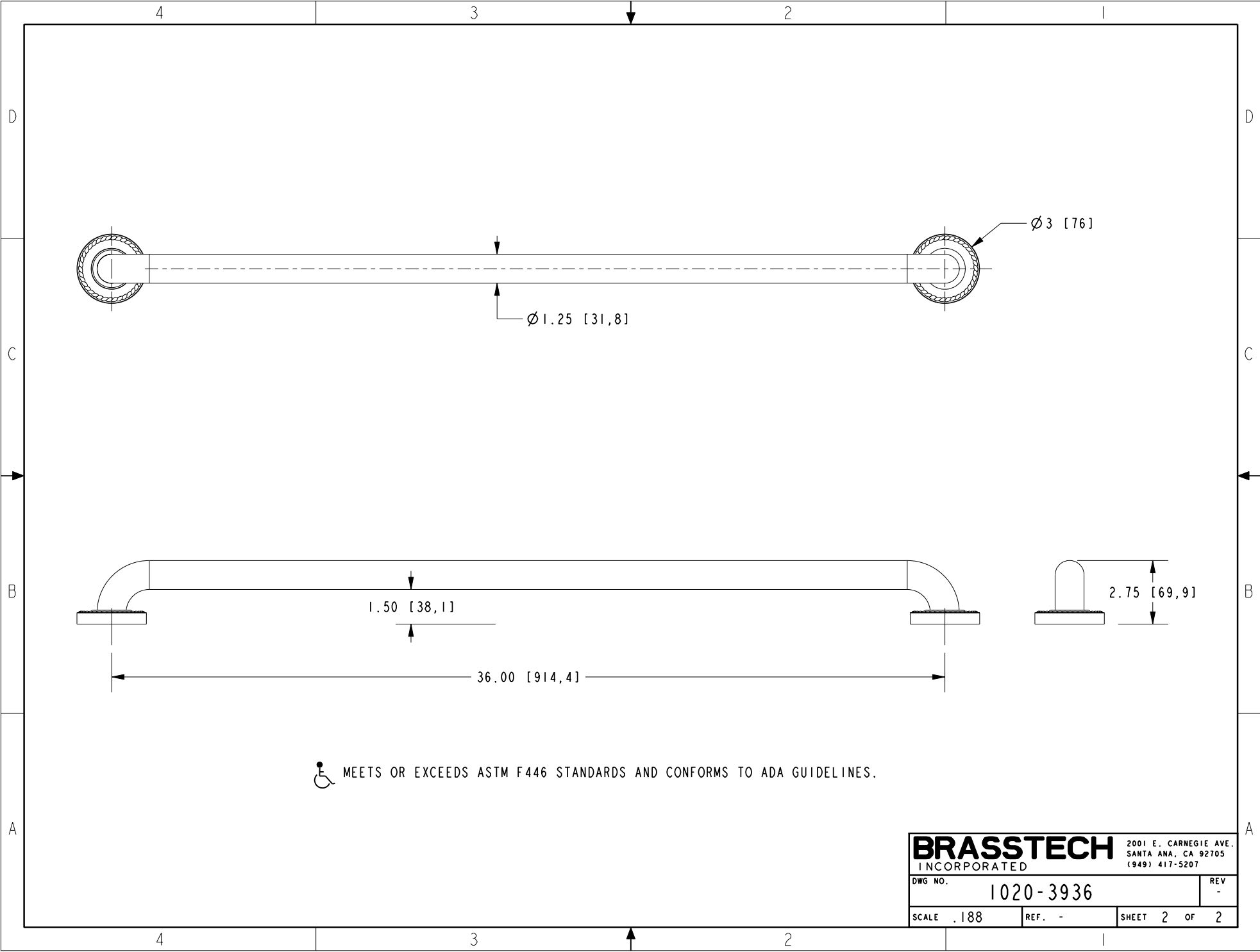
**BRASSTECH** 2001 CARNEGIE AVE.  
 INCORPORATED SANTA ANA, CA 92705  
 (949) 417-5207  
**36" CURVED GRAB BAR  
 ASSEMBLY**

|         |           |      |   |
|---------|-----------|------|---|
| DWG NO. | 1020-3936 | REV  | - |
| SCALE   | .312      | REF. | - |
| SHEET   | 1         | OF   | 2 |

4

3

2



|                  |           |                       |
|------------------|-----------|-----------------------|
| <b>BRASSTECH</b> |           | 2001 E. CARNEGIE AVE. |
| INCORPORATED     |           | SANTA ANA, CA 92705   |
|                  |           | (949) 417-5207        |
| DWG NO.          | 1020-3936 | REV -                 |
| SCALE .188       | REF. -    | SHEET 2 OF 2          |