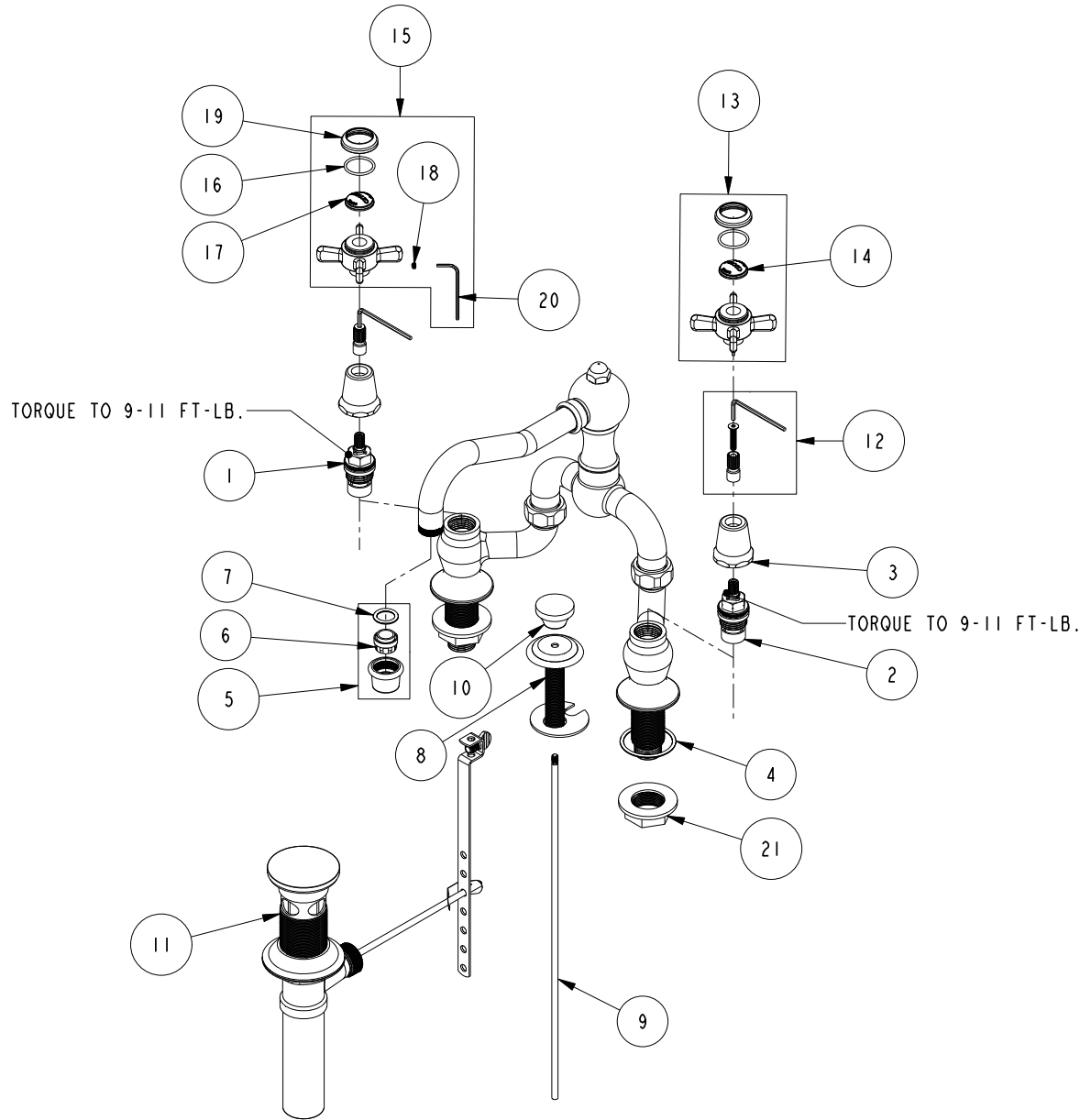


REPLACEMENT PARTS



ITEM	PT/ASSY	SPECIFY FINISH	DESCRIPTION
1	1-006		C/S VALVE CARTRIDGE - HOT
2	1-005		C/S VALVE CARTRIDGE - COLD
3	12259	YES	HANDLE BONNET - TUB FILLER
4	91767		O-RING, #2-128, 50 DURO
5	2-648	YES	AERATOR ASM
6	12403		AERATOR INSERT, Jr. SIZE, 1.2 GPM
7	91028		O-RING, #2- 113, EPDM, 65-75 DURO, NSF 61
8	2-400	YES	POP UP GUIDE ASM
9	10288	YES	3/16" POP UP ROD
10	10961	YES	SMOOTH POP - UP KNOB
11	325	YES	POP UP ASSEMBLY
12	10-304		CARTRIDGE STEM ADAPTER KIT
13	2-115	YES	THIN BLADE X - HANDLE COLD
14	10815		PORC BUTTON - FROID (COLD)
15	2-114	YES	THIN BLADE X - HANDLE HOT
16	91023		O-RING, #2- 019, EPDM, 65-75 DURO, NSF 61
17	10816		PORC BUTTON - CHAUD (HOT)
18	92000		SCREW 8 - 32 X 1/8 SS
19	10814	YES	BEZEL
20	10192		HEX KEY TOOL, #8 5/64
21	91473		FLANGE NUT 1.006"-20

LAV BRIDGE FAUCET
1000B

REV H EN-4740 11/28/23 APPROVED R.S.

NEWPORT BRASS.

t: 949.417.5207 | www.newportbrass.com