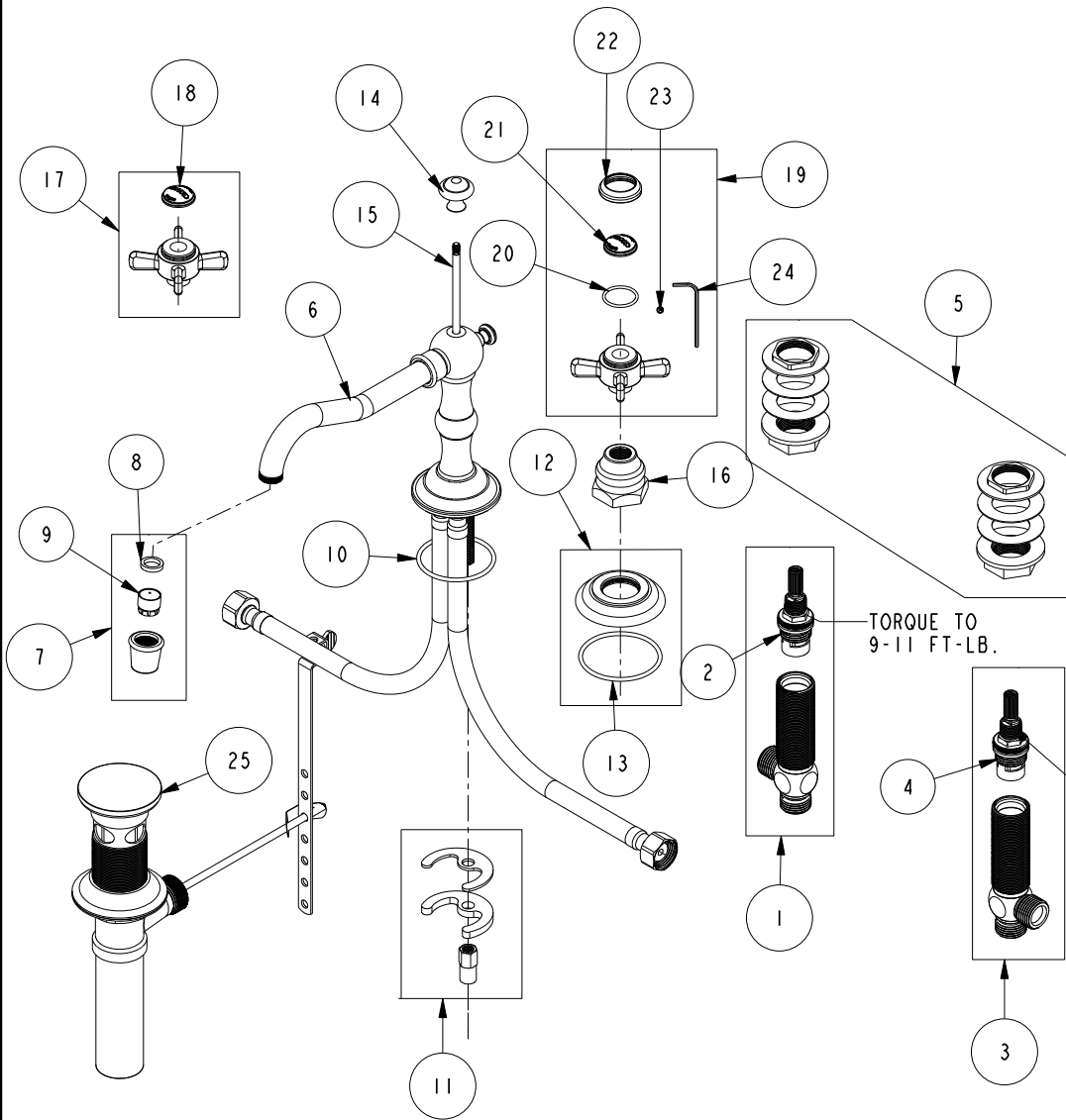


# REPLACEMENT PARTS



ITEM	PT/ASSY	SPECIFY FINISH	DESCRIPTION
1	1-527		W/S CART/BODY ASM (HOT)
2	1-002		W/S CARTRIDGE - HOT
3	1-526		W/S CART/BODY ASM (COLD)
4	1-001		W/S CARTRIDGE - COLD
5	1-027		WIDE SPREAD MOUNTING HARDWARE
6	3-360	YES	WIDE SPREAD SPOUT ONLY
7	2-633	YES	AERATOR ASM
8	91265		WSHR, 11 ID X 15 OD X 2.8 MM THK, FLT, RUBBER NSF 61 APPR
9	12402		AERATOR INSERT, TT SIZE, 1.2 GPM
10	91756		O-RING #2-134, EP, 50 DURO - GREY
11	1-491		SPOUT MOUNTING KIT
12	20-681	YES	ESCUTCHEON ASSEMBLY
13	91753		O-RING, # 2-136, EP, 50 DURO - GREY
14	10289	YES	POP-UP KNOB
15	10288	YES	3/16" POP UP ROD
16	10523	YES	HEX ESCUTCHEON BONNET
17	2-114	YES	THIN BLADE X - HANDLE HOT
18	10816		PORC BUTTON - CHAUD (HOT)
19	2-115	YES	THIN BLADE X - HANDLE COLD
20	91023		O-RING, #2- 019, EPDM, 65-75 DURO, NSF 61
21	10815		PORC BUTTON - FROID (COLD)
22	10814	YES	BEZEL
23	92000		SCREW 8 - 32 X 1/8 SS
24	10192		HEX KEY TOOL, #8 5/64
25	325	YES	POP UP ASSEMBLY

WIDE SPREAD WITH BLADE X - HDL  
1000

REV F EN-4728 11/06/23 APPROVED RS

**NEWPORT BRASS.**

t: 949.417.5207 | www.newportbrass.com