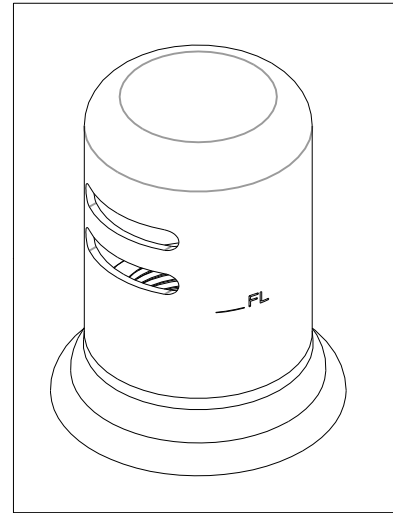
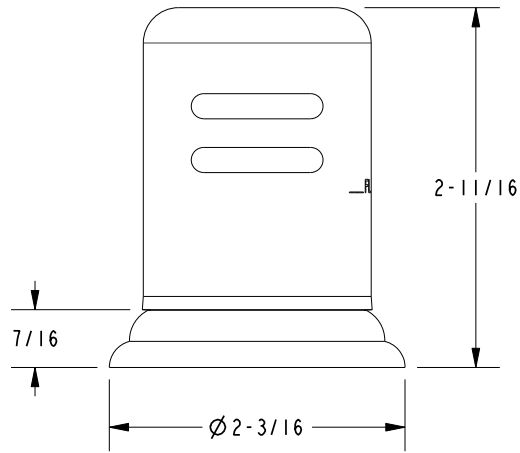
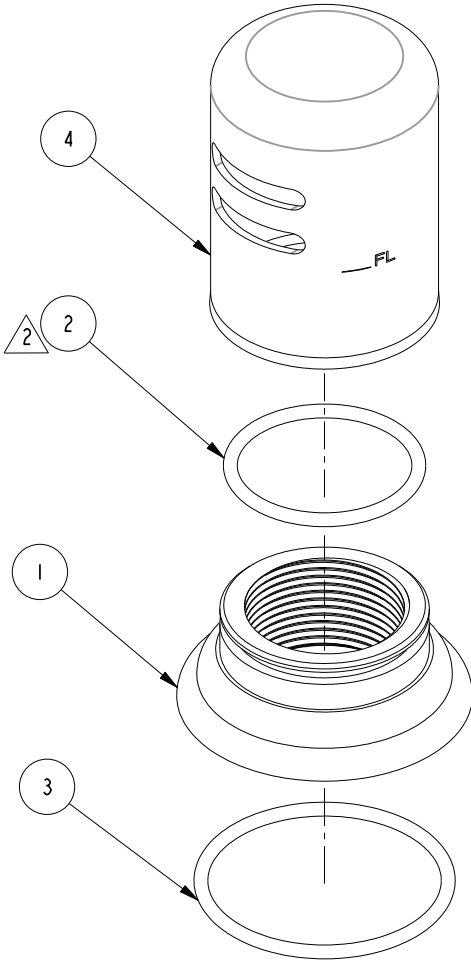


NOTES:

- (N1) 1. FIT / FORM / FUNCTION SHALL FOLLOW PS-E.008.
- 2. APPLY THIN FILM OF DOWN CORNING III.



BILL OF MATERIAL (CURRENT LEVEL)				
ITEM	PT/ASSY	DESCRIPTION	TYPE	QTY.
1	12214	ESCUTCHEON	PART	1
2	91227	O-RING, #2-125, EPDM, 65-75 DURO	PART	1
3	91394	O-RING, #2-132, EPDM, 65-75 DURO	PART	1
4	50688	AIR GAP CAP	PART	1

TESTING	-	-	-
ASSEMBLY	-	-	-
PLATING	-	-	1030-5711
POLISHING	-	NEXT ASSY	USED ON
MACHINING	-	APPLICATION	
TOOLING FIXTURE #	REMOVE ALL BURRS AND SHARP EDGES		

UNITS ARE: INCHES [MM]  
 TOLERANCES ARE:  
 FRACTIONS DECIMALS ANGLES  
 $\pm 1/16"$  .X  $\pm .1$  [2.5]  $\pm 1^\circ$   
 .XX  $\pm .06$  [1.5]  
 (X.XXX) DENOTES CRITICAL DIMS.  
 ALL THREADS ARE CRITICAL

**BRASSTECH** 2001 CARNEGIE AVE.  
 INCORPORATED SANTA ANA, CA 92705  
 (949) 417-5207

**AIR CAP ASM**

-				
-	A	EN-3293	3/31/17	J.A.
-		EN-3270	02/22/17	V.V.
ZONE	REV	DESCRIPTION	DATE	APPROVED

COPYRIGHT 2005 BRASSTECH, INC.  
 THESE DRAWINGS AND THE DESIGNS  
 DEPICTED HEREIN ARE THE PROPRIETARY  
 PROPERTY OF BRASSTECH. ANY USE  
 OR REPRODUCTION IS SUBJECT TO  
 THE EXPRESS APPROVAL OF BRASSTECH.  
 UNAUTHORIZED USE IS STRICTLY  
 PROHIBITED. ALL RIGHTS RESERVED.

DRAWN	H. LE	02/22/17
CHECKED	V. VU	02/22/17
APPROVED	V. VU	02/22/17

DWG NO.	1030-5751	REV	A
SCALE	.700	REF.	-
SHEET		OF	