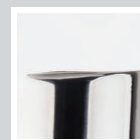
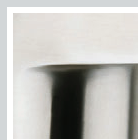




Available Finishes



POLISHED
STAINLESS
(ML085-P)



BRUSHED
STAINLESS
(ML085-B)

Features

- Solid stainless steel construction
- ADA compliant
- Tarnish and corrosion-resistant finish
- Single-handle operation
- Limited lifetime warranty
- Finish-matched pop-up drain included
- Single-hole installation

Codes & Standards

Specified to meet or exceed:

- NSF 61-9
- ASME A112.18.1 M/A 112.18.1
- NSF/ANSI 372
- ADA

Specifications

- Flow rate: 1.2GPM
- Height: 12-1/2"
- Spout height: 10-1/2"
- Spout reach: 4-3/4"
- Material: Stainless Steel
- Max. deck thickness: 2"
- Valve type: Ceramic disc
- Watersense Certified
- Low-lead compliant

Not approved for commercial use

Installation Notes

- Cover drains to avoid losing parts
- Fittings should be installed by a licensed plumber
- When installing flexible hoses please note:
 - there should be no torsion or deformation
 - do not fold into a V or L shape
 - do not use if there is any cracking or deformity.

DIMENSIONS & MEASUREMENTS

