

MISENO
— TAKE ME HOME —

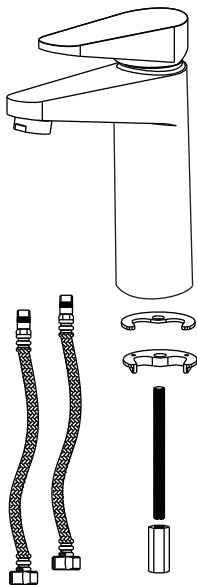
Installation Instructions

ML085 Single-Handle Lavatory Vessel Faucet

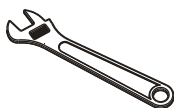


Before Your Installation

Check to make sure you have the following parts indicated below:



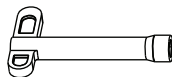
Tools You Will Need



Adjustable wrench



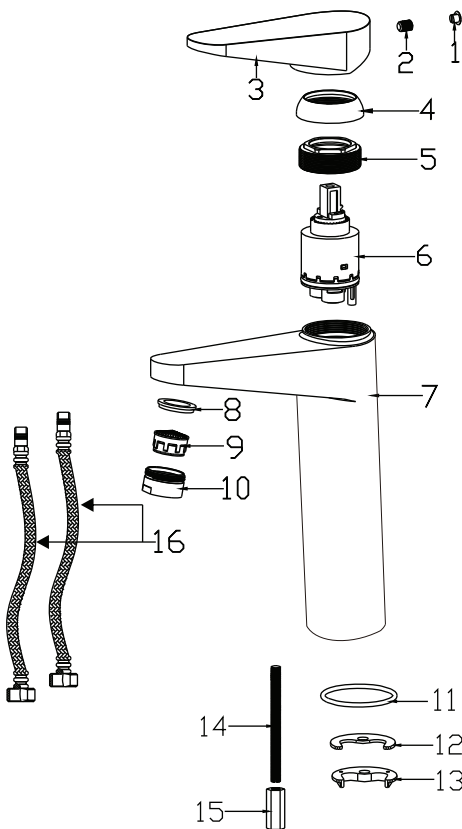
Spanner for aerator
(supplied)



Spanner for body
(supplied)

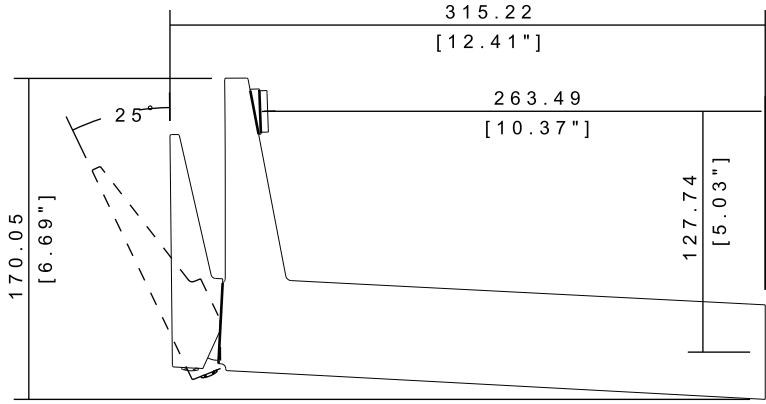
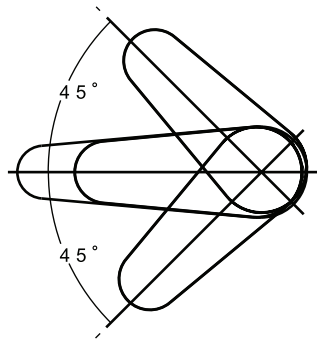
Replacement Parts

Keep this manual for ordering replacement parts.



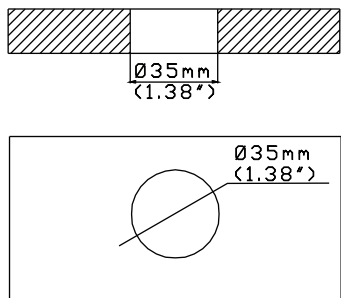
NO	NAME
1.	Cover cap
2.	Screw
3.	Handle
4.	Cartridge holder
5.	Lock nut
6.	Cartridge
7.	Faucet body
8.	Gasket
9.	Aerator
10.	Aerator holder
11.	O-ring
12.	Rubber gasket
13.	Stainless steel gasket
14.	Lock screw
15.	Lock nut
16.	Hose

Product Dimension Drawing

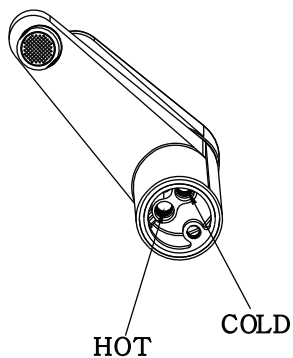


Faucet Installation Procedures

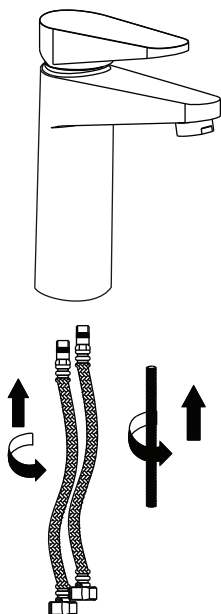
Step ①



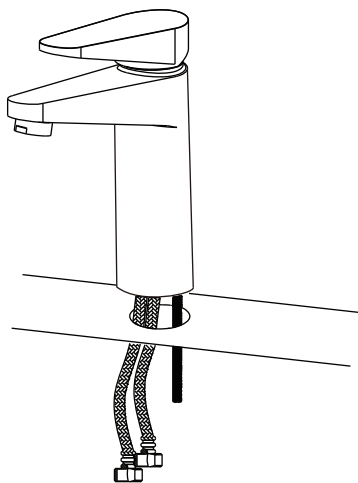
Step ②



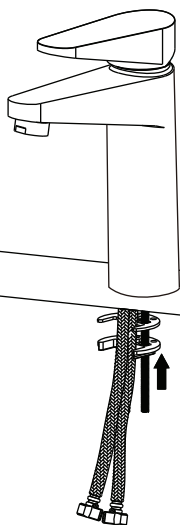
Step ③



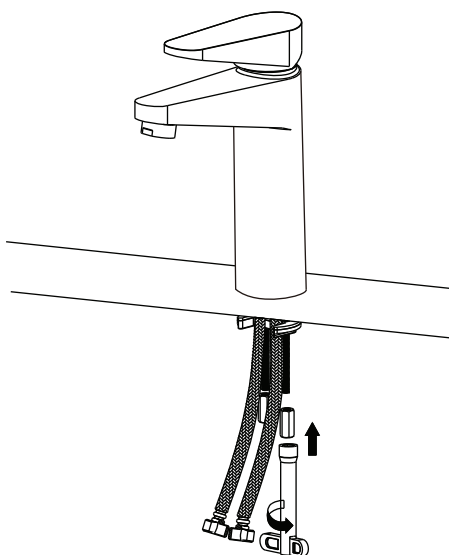
Step ④



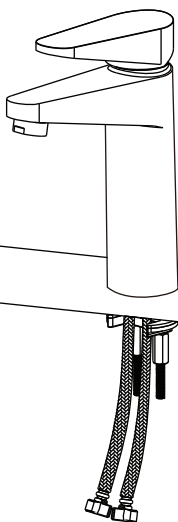
Step ⑤



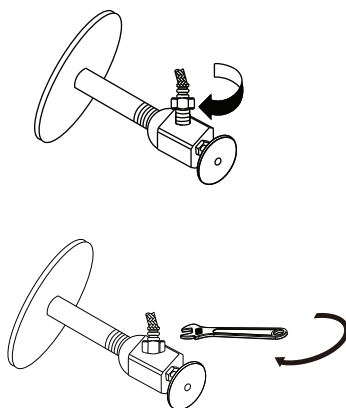
Step ⑥



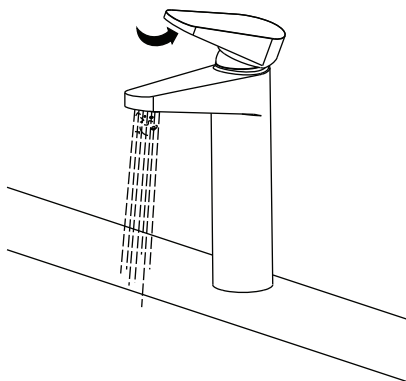
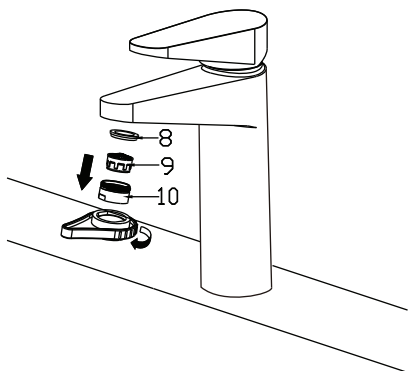
Step ⑦



Step ⑧



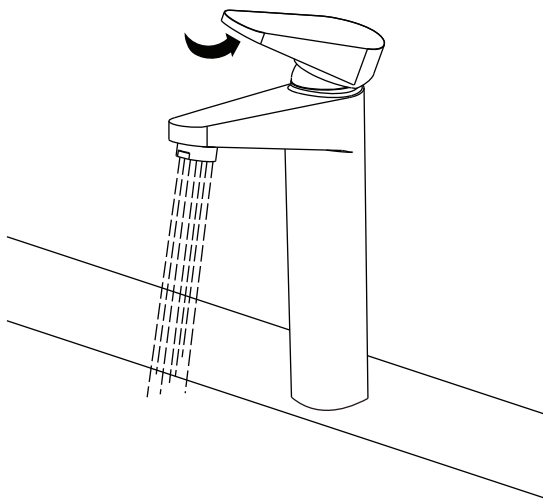
Step ⑨



Notice:

Please removing all of the sand, silt and other things from the water hose before assembling, to avoid blocking the faucet and effecting water rate. Please use the special tools to disassemble it and wash with pneumatic equipment, if the faucet blocked.

Step ⑩



Cleaning Recommendations

Today, modern sanitary and kitchen tapware, showers, accessories, washstands, tubs and consist of very different materials to comply with the needs of the market with regard to design and functionality.

To avoid damage and product failures and not void Warranty please follow the below guideline.

- Only use cleaning material which is explicitly provided for this type of application.
- Never use cleaning materials, which contain hydrochloric acid, formic acid, chlorine pale lye or acetic acid, as they cause considerable damage.
- Phosphorus acidic cleaners are only conditionally applicable.
- Mixing cleaning agents is not permitted, generally.
- Never use cleaning materials or appliances with an abrasive effect, such as unsuitable cleaning powders, sponge pads or micro fiber cloths
- The instructions of the cleaning agent manufacturers have to be followed absolutely.
- Cleaning has to be carried out with a specified clenaer dosage, contact time, object-related and adapted to the needs.
- The building up of calcifications has to be removed by cleaning regularly.
- When using spray cleaners, spray the cleaning solution onto a soft cloth or sponge, never directly onto the actual faucet, as the atomized spray could enter openings and gaps in the faucet product and cause damage.
- After cleaning rinse thoroughly with clean water to remove any cleaner residue.
- The use of steam cleaners is not permitted. The high temperatures can damage the products.

• Water hose supply lines should be inspected monthly for abrasions to the lines and any bulges that could indicate weakness to the lines. These types of issues can cause ruptures to the supply lines that would cause flooding/damage. Do your part and regularly inspect your water supply lines.

Important

Residues of toiletries such as liquid soaps, shampoos and shower gels, hair dyes, perfumes, aftershave and nail varnish can also cause damage.

Here too: Carefully rinse with water after use to remove residues. Likewise, do not store any cleaning agents or chemicals under the products, for example in a vanity unit, as the vapors may damage the products.

Components with damaged surfaces must be exchanged, otherwise there could be an injury danger. Damage caused by improper treatment will not be covered by our warranty.

Limited Lifetime Faucet Warranty

LIMITED CONSUMER WARRANTY

This product has been manufactured and tested to the highest quality standards. This warranty is limited to products that are purchased by a consumer in the United States or Canada after June 1, 2017, and installed in either the United States or in Canada.

WHO IS COVERED BY THE WARRANTY

This warranty extends to the original purchaser only. This warranty is non-transferable.

WHAT IS COVERED BY THE WARRANTY

The warranty covers products against defects in material or workmanship as follows: The manufacturer will replace at no charge for parts only or, at its option, replace any product or part of the product that proves defective because of improper workmanship and/or material, under normal installation, use, service and maintenance. If the manufacturer is unable to provide a replacement and repair is not practical or cannot be made in a timely fashion, the manufacturer may elect to refund the purchase price in exchange for the return of the product.

LENGTH OF WARRANTY

Replacement or repaired parts of products will be covered for the term of this warranty, as stated in the following sentences. If you are a consumer who purchased the product for use primarily for personal, family or household purposes, this warranty extends for limited lifetime. If you purchased the product for use for any other purpose, including, without limitation, a commercial or industrial application purpose, this warranty is void. Any commercial or Industrial use will automatically void this warranty.

The manufacturer warrants the spray assembly component of the product to be free from defects in workmanship and materials under normal use and service for a period of one (1) year from the initial date of purchase by the owner and end-user, contractor or builder or from an authorized dealer.

The manufacturer reserves the right to modify this warranty at any time, it being understood that such modifications will not alter the warranty conditions applicable at the time of sale of the products in question.

This warranty does not apply unless the product is installed by a fully insured and licensed professional. The manufacturer strongly recommends that such licensed professionals have experience in the installation of bathroom and kitchen products. Installation of certain products, including without limitation glass products, by a non-professional may result in glass breakage and possibly personal injury or death.

The manufacturer is not liable for personal injuries or death to any person or for any direct, special, incidental or consequential damage, loss of time, loss of profits, inconvenience, incidental expenses, labor or material charges, or any other costs resulting from the use of this product or equipment or pertaining to the application of the present warranty, or resulting from the removal or replacement of any product or element or part covered by the warranty.

EXCEPT AS OTHERWISE PROVIDED ABOVE, THE MANUFACTURER MAKES NO WARRANTIES, EXPRESS OR IMPLIED, INCLUDING WARRANTIES OF MERCHANTABILITY AND FITNESS FOR A PARTICULAR PURPOSE OR COMPLIANCE WITH ANY CODE.

To obtain warranty or any information on the products, please contact the manufacturer directly.