

Faucet Installation Instructions

ML102-PC

- Hole Diameters are 1 ³/₁₆" minimum to 1 ¹/₂" (without escutcheon) or 1 ³/₄" (with escutcheon) maximum
- Maximum deck thickness is 2 ³/₈" (without escutcheon) or 2 ¹/₈" (with escutcheon)
- This faucet comes completely assembled and water tested
- Includes braided stainless steel supply lines with 3/8" OD Inlets and 1/2" IPS adapters (for use only when needed)
- Tools required-channel lock pliers (or pipe wrench), basin wrench, small crescent wrench and Teflon tape
- Shut off water supply prior to beginning installation

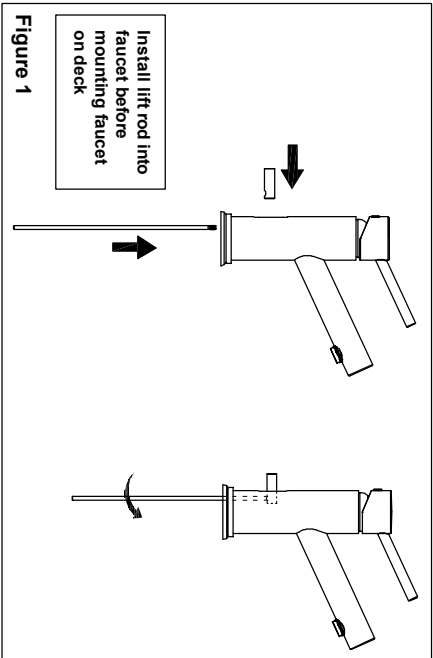


Figure 1

Step 1 Install Pop-up Rod

Push lift rod through hole in bottom of body then reattach lift rod knob.

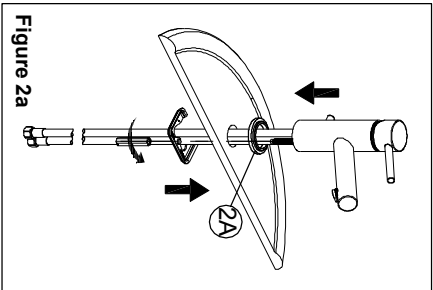


Figure 2a

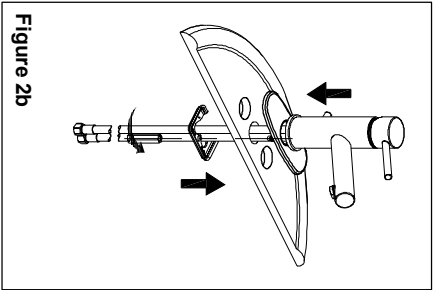


Figure 2b

Step 2a Single Hole Mounting

Insert faucet through sink with flange (2A) above the sink. From underneath slide on washer and secure faucet by tightening nut.

Step 2b Three Hole Mounting

Follow step 2a including deck plate between flange and sink.

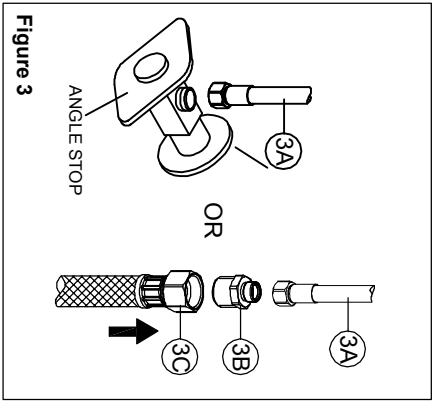


Figure 3

Step 3

Connect hot and cold faucet supply lines (3A) directly to the angle stops. Or attach included 1/2" IPS adapters (3B) to faucet supplies and connect to 1/2" IPS water lines (3C, not included). Use wrenches to tighten connections. Do not overtighten.

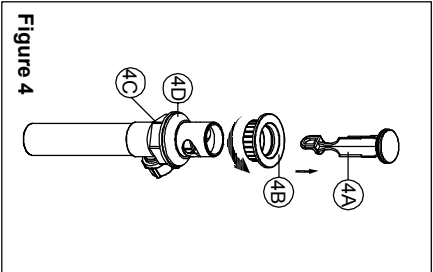


Figure 4

Step 4

Install Pop-up Assembly. Remove stopper (4A) and flange (4B). Screw nut (4C) all the way down. Push gasket (4D) down.

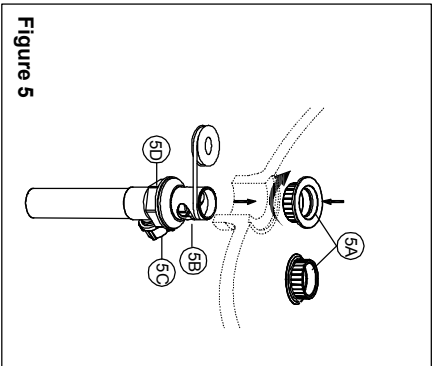


Figure 5

Step 5

Apply silicone sealant or plumber's putty to the underside of flange (5A). Apply teflon tape to threads at the top of body (5B). Insert body (5B) into sink. Screw flange onto body. Pivot hole (5C) must face the back of the sink. Tighten nut (5D), do not overtighten. Clean excess silicone sealant or putty.

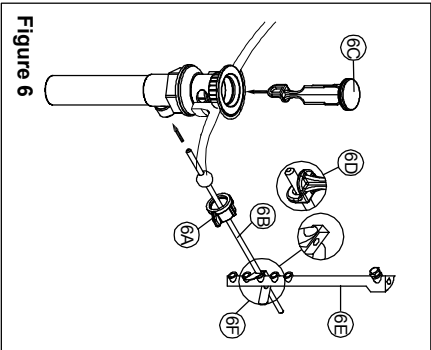


Figure 6

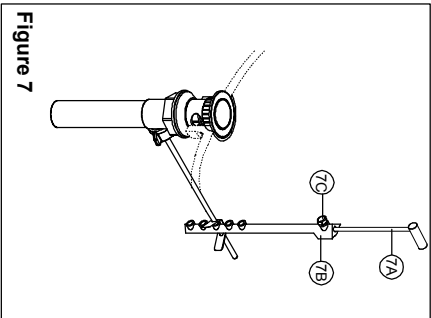


Figure 7

Step 6

Remove pivot nut (6A). Install horizontal rod (6B) and stopper (6C) as non-removable (6D). Hand tighten pivot nut (6A). Attach horizontal rod to strap (6E) using clip (6F).

Step 7

Insert lift rod (7A) into strap (7B) and tighten screw (7C).

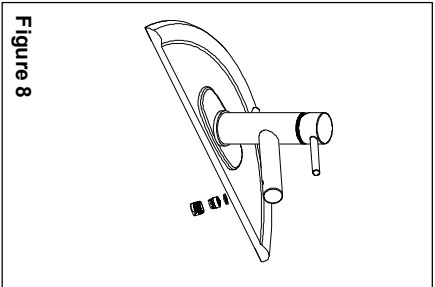
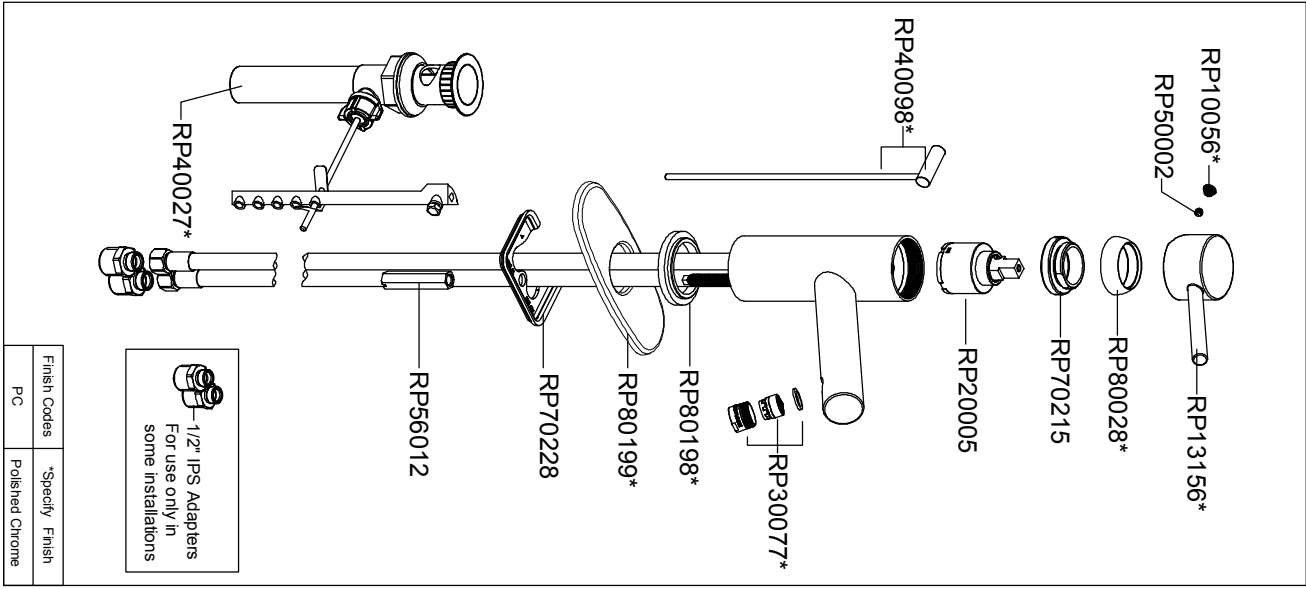


Figure 8

Step 8

Important: After installation is complete remove aerator and turn faucet on for two minutes to flush out any debris from the water lines. While water is running check for leaks. Replace aerator.



Finish Codes	Specify Finish
PC	Polished Chrome

Faucet Installation Instructions

ML102-PC

Maintenance: Clean with warm water, soft cotton cloth and non-abrasive liquid dish soap. Towel dry. Never use acids, harsh abrasives or detergents.

MISENO

For additional assistance or service call: 1-855-480-2915 or visit our website www.miseno.com

MISENO

For additional assistance or service call: 1-855-480-2915 or visit our website www.miseno.com