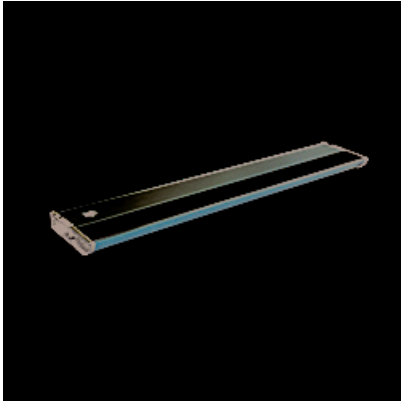




Lighting Your Life Since 1970

Product Specifications - 89974MB

Job Name:	Job Type:
Quantity:	Comments:



**89974MB**  
**CounterMax MX-L120DL 21\"/>**

**Finish**  
 Metallic Bronze

**Glass/Shade**  
 Clear

**Product Category**  
 Under Cabinet

**Lamping**

Number of Bulbs	1
Light Type	LED
Bulb Type	LED
Max Bulb Wattage	10
Max Fixture Wattage	
Rated Life	
Rated Lumens	±587
Color Temp	±3,000 K
Bulb(s)	Included
Light Up/Down	N/A
Beam Spread	N/A
CRI	82
Photo Cell Included	N/A
Ballast/Driver/Transformer	No
Dimmable	N/A

**Measurements**

Width	4.00"
Height	1.00"
Length	21.00"
Extension	N/A
Back Plate Width	N/A
Back Plate Height	N/A
HCO	N/A
Min Overall Height	0.00"
Max Overall Height	N/A
Hanging Weight	2.42 lbs
Height Adjustable	N/A
Slope	N/A
Chain Length	N/A
Wire Length	N/A
Canopy Width	N/A
Canopy Height	N/A
Canopy Length	N/A

**Shipping**

Carton Weight	3.23 lbs
Carton Width	2"
Carton Height	23"
Carton Length	5"
Carton Cubic Feet	0.16
Master Pack	10
Master Pack Weight	32.34 lbs
Master Pack Width	12.50"
Master Pack Height	11.50"
Master Pack Length	24.25"
Master Cubic Feet	2.02
UPS Shippable	Yes

**Certification**

Safety Rating	Dry
Energy Star	No
CA Title 24	No
CA Title 20	No
ADA	No
Dark Sky	N/A

**Other**

UPC Code	783209116795
Shades Included	N/A
Crystals Included	N/A
Diffuser Included	N/A
Conversion Kit	N/A
Material	N/A

**Equivalents**

Incandescent Watts	N/A
Fluorescent Watts	N/A

Maxim Lighting International and all designs, logos and images © 2015 Maxim Lighting International. All Rights Reserved. Maxim Lighting International reserves the right, at any time, to make changes in the design and/or construction of the product including the discontinuation of product without prior notice. Color may vary from what is pictured above due to limitations inherent to photographic processes.

Always consult a qualified, licensed electrician before installation of any product weighing 35 pounds or more. We recommend that a qualified, licensed electrician do the installation. Always install to a mechanically sound structure.