

Features

- Digitally controlled thermostatic mixing valve.
- Anti-scald protection.
- Up to 13 gpm (gallons per minute) maximum flow rate (8.0 gpm maximum from one outlet).
- Two independently controllable 1/2" outlets with copper tube connections.
- 1/2" inlets with copper tube connections.

Material

- Reinforced engineering-grade thermoplastic body.

Installation

- Mounts within a standard 2"x4" wall.
- Install valve up to 20' away from the interface (cable included with UI).
- Distance can be extended with a standard RJ-11 phone extension cord.
- Pre-wired with three-prong plug for connection to 110V AC receptacle.

Required Products/Accessories

- K-527 digital shower interface, portrait setting
or
K-527-E digital shower interface with eco-mode diverter

Included Components

- Additional Components:
Mounting hardware



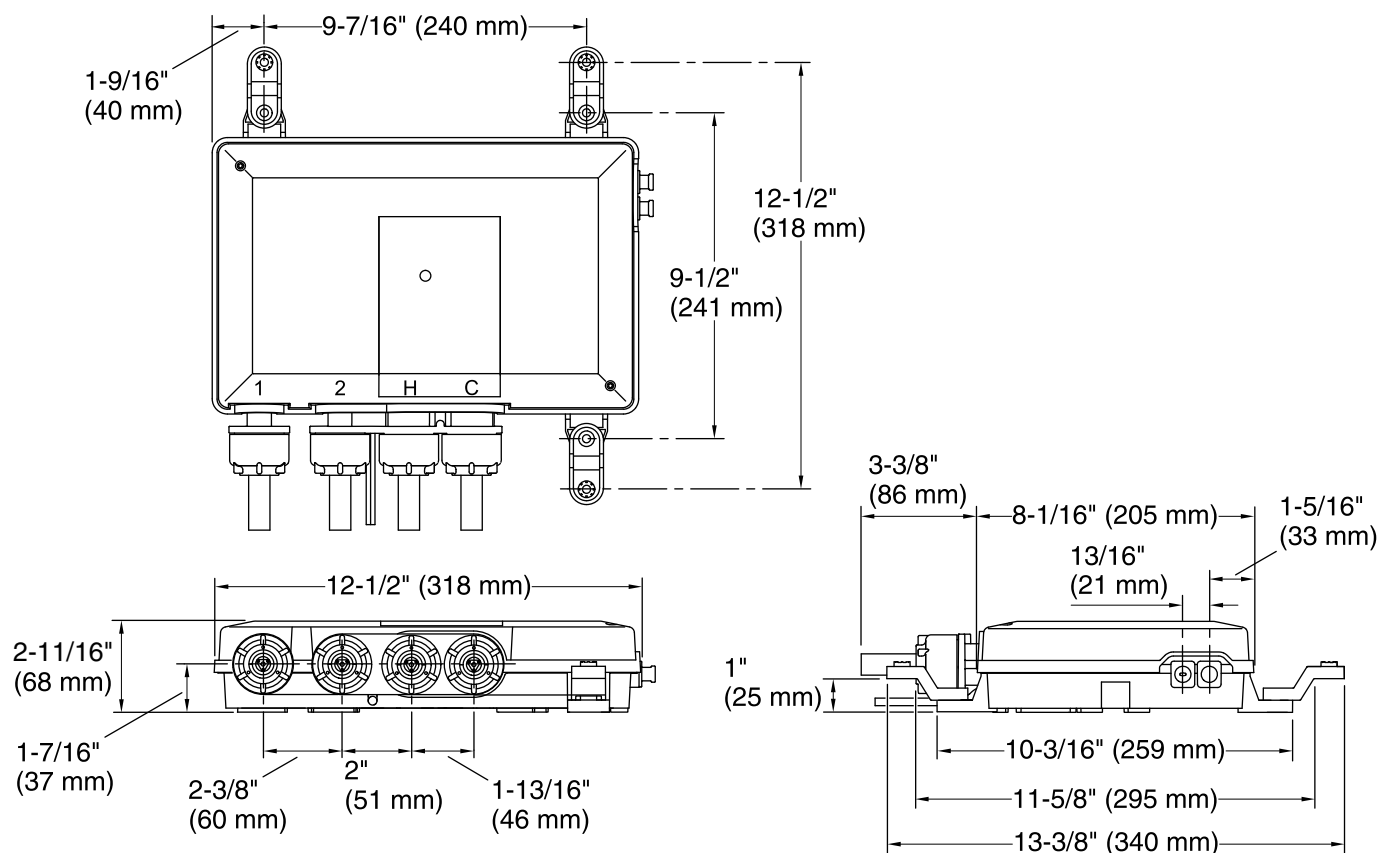
Codes/Standards

ASME A112.18.1/CSA B125.1
ASSE 1016/ASME A112.1016/CSA B125.16
UL 1951
CSA C22.2 No. 14
CSA C22.2 No. 68

KOHLER® Electronic Faucets, Valves, and Controls Five-Year Limited Warranty

See website for detailed warranty information.

The BLUETOOTH® word mark and logos are registered trademarks owned by Bluetooth SIG, Inc. and any use of such marks by Kohler Co. is under license. Other trademarks and trade names are those of their respective owners.



Required Electrical Service

One circuit required, protected with Class A Ground-Fault Circuit-Interrupter (GFCI). Outside North America, this device may be known as a Residual Current Device (RCD).

120 V, 15 A, 60 Hz

Technical Information

All product dimensions are nominal.

Power source: Plug - AC, included

Shower Valve:

Flow rate - Max: 13 gal/min (49.2 l/min)

Flow rate - Min: 1.6 gal/min (6.1 l/min)

Min. pressure IN: 45 psi (3.1 bar)

Valve body: Plastic

Drain included: No

Bluetooth® range: 30 ft (0.8 m)

Bluetooth® version: 4.1

Max. Ambient temp: 104°F (40°C)

Min. Operating temp: 86°F (30°C)

Max. Operating temp: 120°F (48.9°C)

Notes

Install this product according to the installation instructions.

For use with showerheads or handsprays rated at 1.6 gal/min (6.1 l/min) or higher.

If used for bath-shower system, the bath spout must be connected to the #1 outlet port.

Provide access for servicing valve.

Use 1/2" supply lines.

Do not install this valve in walls exposed to subfreezing temperatures.

Avoid mounting the valve in a wall adjacent to a frequently occupied room.

Pressure regulators are recommended in applications where large pressure swings are anticipated or pressure differences between the supplies exist.

Water hammer arrestors and shut-offs are required in both the hot and cold supplies. Shower drain capacity must meet the shower system flow rate.