



**Whist®**  
Under-mount Bathroom Sink  
**K-2741-G8**

**Features**

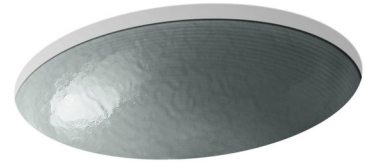
- Glass.
- Under-mount.
- Oval basin with concentric ring styling.
- Without overflow.
- No faucet holes; requires wall- or counter-mount faucet.
- 19" (483 mm) x 16-1/8" (410 mm) x 5-3/8" (137 mm)

**Recommended Accessories**

K-7107 Decorative Drain  
K-7108 Decorative Drain  
K-7129 Drain  
K-9018 P-Trap

**Components**

Additional included component/s: Hardware kit, and drain gasket kit.



**ADA**

**Codes/Standards**

CSA B45.11/IAPMO Z401  
ADA  
ICC/ANSI A117.1


**KOHLER® One-Year Limited Warranty**

See website for detailed warranty information.

**Available Color/Finishes**

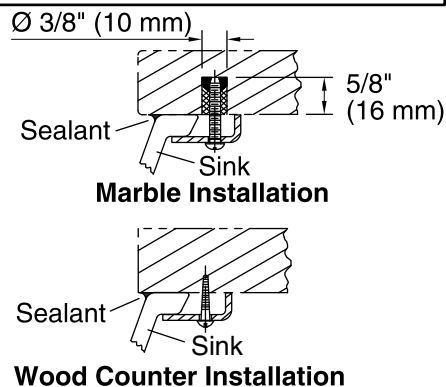
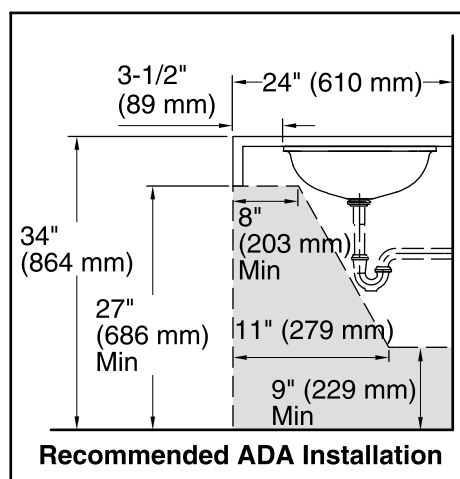
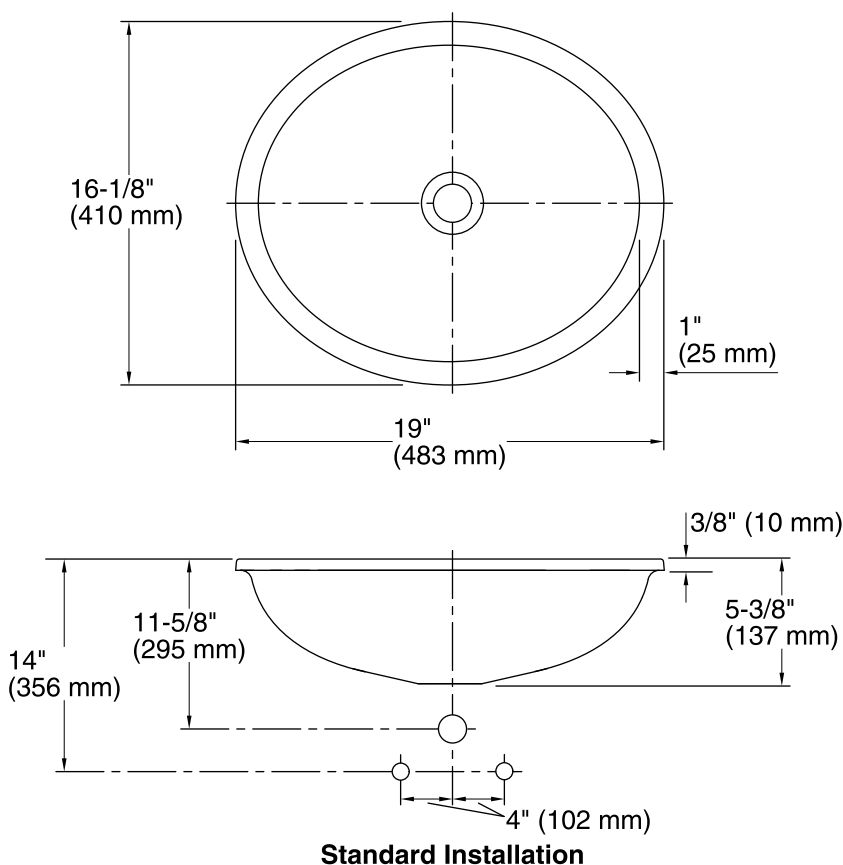
*Color tiles intended for reference only.*

**Color Code Description**

	B11	Ice
--	-----	-----

# KOHLER®

## Whist® Under-mount Bathroom Sink K-2741-G8



### Technical Information

All product dimensions are nominal.

Bowl configuration: Single

Installation: Under-mount

Bowl area (Only) Length: 17-3/16" (437 mm)  
Width: 14-3/16" (360 mm)  
Bowl depth: 4-3/4" (121 mm)  
Water depth: 4-3/4" (121 mm)

Drain hole: 1-3/4" (44 mm)

Template: 1151011-7, required, included

### Notes

Install this product according to the installation instructions.

**NOTICE:** Countertop manufacturer or cutter must use the cut-out template provided with the product, or a current one provided by Kohler Co. (call 1-800-4-KOHLER). Kohler Co. is not responsible for cutout errors when the incorrect cut-out template is used.

ADA compliant when installed to the specific requirements of these regulations.