

### Features

- Brass construction.
- 5" (127 mm) gooseneck spout.
- Standard aerator.
- Lower flow aerator options available (see Kohler Price Book).
- Flange.
- External NPT connection.
- 2.5 gal/min (9.5 l/min) maximum flow rate [max at 60 psi (4.14 bar)].



For complete listing of available colors, go to [kohler.com](http://kohler.com).

### Codes/Standards

ASME A112.18.1/CSA B125.1

NSF 61

DOE - Energy Policy Act 1992

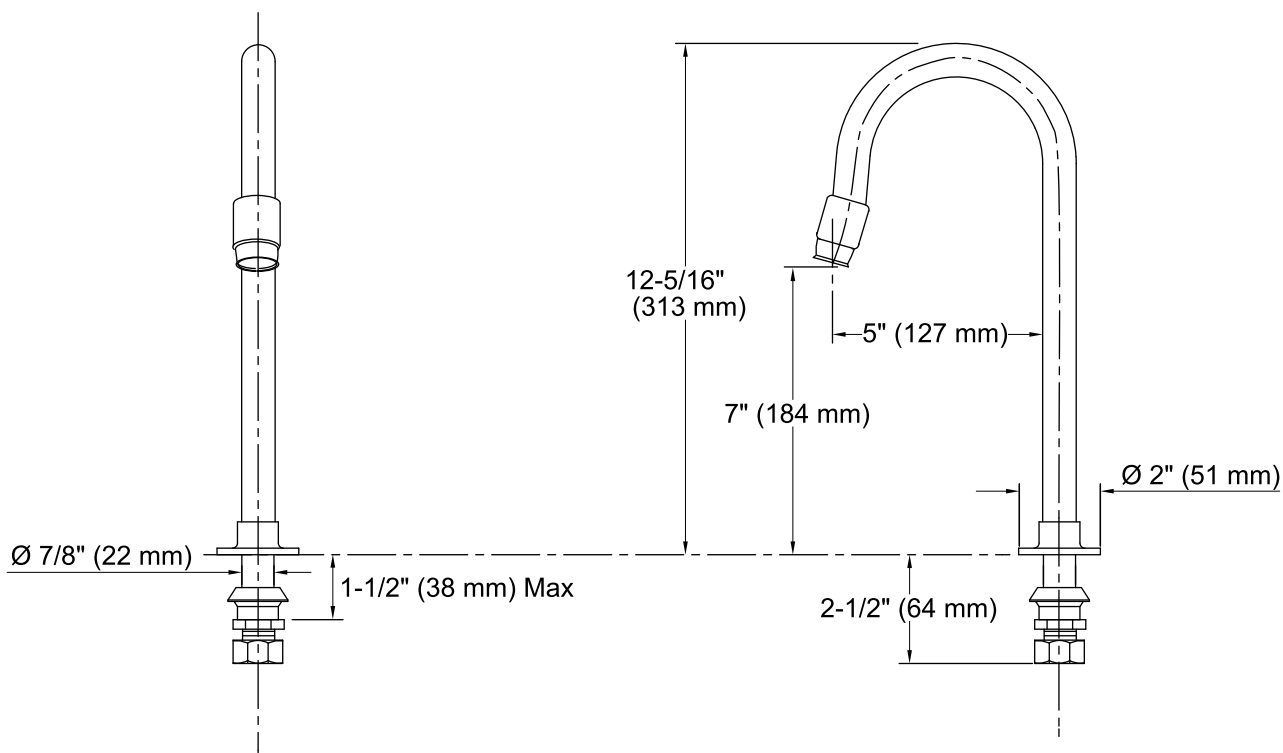
All applicable US Federal and State material regulations

### KOHLER® One-Year Limited Warranty

See website for detailed warranty information.

### Product Specification

Bathroom sink spout shall be 5" (127 mm) gooseneck spout reach and 7" (178 mm) spout outlet height. Bathroom sink spout shall be brass construction. Bathroom sink spout shall be standard aerator. Bathroom sink spout shall be 1/2" external NPT connection. Bathroom sink spout shall be KOHLER Model K-13770.



### Technical Information

All measurements are nominal.

Spout reach: 5" (127 mm)

#### Faucet:

Flow rate: 2.5 gal/min (9.5 l/min)

Pressure: 60 psi (4.1 bar)

### Installation Notes

Install this product according to the installation guide.