



Tend™

Urinal with Mach® Tripoint® flushometer
K-PR20713-T2D

Features

- Fixture and touchless flushometer combination is engineered for optimal performance.
- Washout urinal.
- 0.5 gpf (1.9 lpf).
- 3/4" (19 mm) top spud.
- Flush valve activation distance is factory-set.
- No external flush volume adjustment ensures water conservation.
- 24-hour automatic sentinel flush keeps trapway fresh.
- Mechanical override enables flushometer to be used manually even during a power outage.
- Chloramine and chlorine resistance on all rubber components exposed to waterway.
- Locking stop cap provides protection against vandalism.
- 125-micron filter protects internal components.
- High back pressure vacuum breaker.
- Powered by 1.5V AA lithium batteries.
- For this combination, order K-20713-ET urinal and K-10UD00G20 flushometer.

Material

- Vitreous china urinal.
- Brass flush valve with durable Polished Chrome finish.

Technology

- Electronic infrared sensor with Tripoint® technology for accurate activation.
- Patented piston technology for superior flush volume accuracy.

Water Conservation & Rebates

- This product can help a building earn Water Efficiency points in LEED® Green Building Rating System.

Included Components

Additional Components:

3/4" inlet spud
Hanger
NPT outlet



ADA

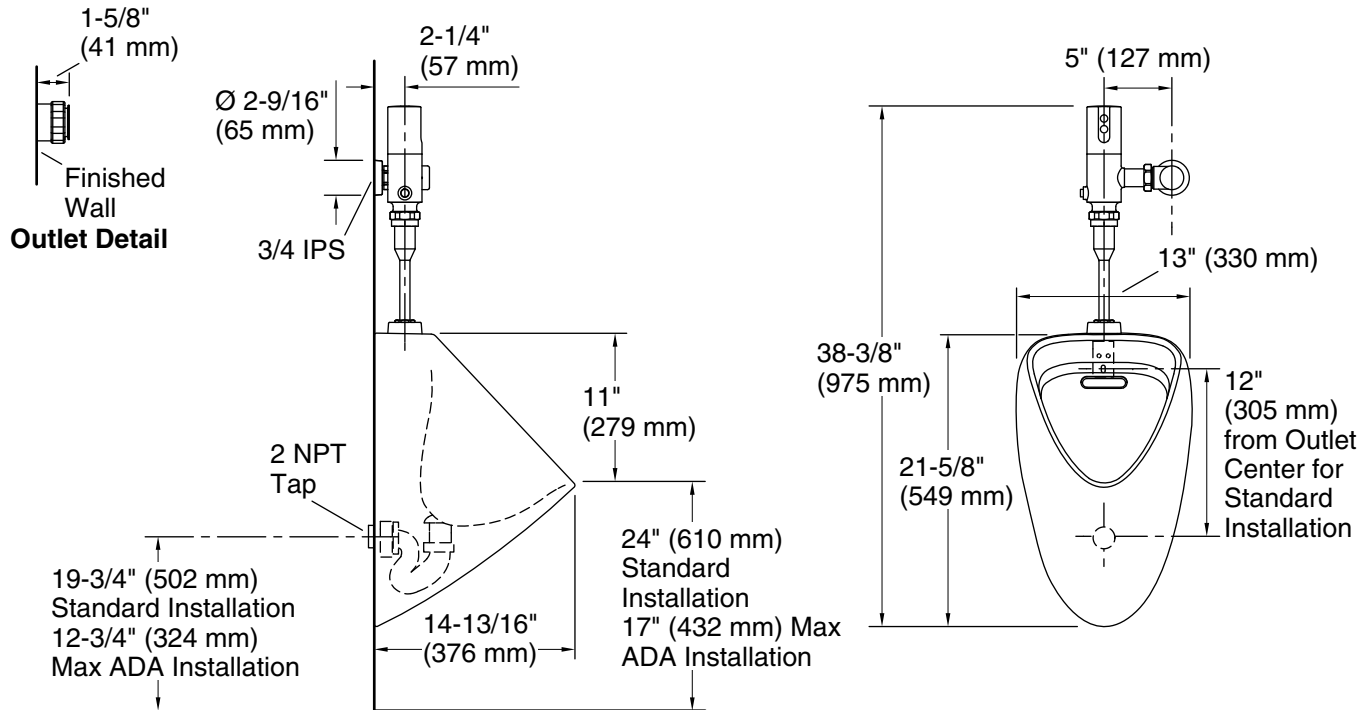
Codes/Standards

ASME A112.18.1/CSA B125.1
ASME A112.19.2/CSA B45.1
ASSE 1037/ASME A112.1037/CSA B125.37
DOE - Energy Policy Act 1992
EPA WaterSense®
California Energy Commission (CEC)
ADA
ICC/ANSI A117.1

KOHLER® One-Year Limited Warranty

See website for detailed warranty information.

Note: Customer Connection Pipe must have 2 NPT External Thread.



Technical Information

All product dimensions are nominal.

Spud size: 3/4, Outlet, Top

Pressure and Supply Requirements

Fixture pressure min 25 psi (172.4 kPa)
(static):

Fixture flow rate min: 25 gpm (94.6 lpm)

Fixture pressure 80 psi (551.6 kPa)
max (static):

Notes

Install this product according to the installation instructions.

ADA compliant when installed to the specific requirements of these regulations.