



# Volute™

70-7/8" x 30-3/8" freestanding bath with base  
**K-29330-0B7**

## Features

- Freestanding design creates a striking focal point in your bathing area
- Oval basin creates a spacious bathing experience
- Integral lumbar support on both ends
- Slotted overflow allows for deep soaking
- 12-1/16" (306 mm) deep-soaking depth provides a luxurious bathing experience
- Safeguard® slip-resistant surface provides excellent traction underfoot
- Center drain
- Drain and integral overflow preinstalled to reduce installation time
- Contrasting pedestal base adds a dramatic, contemporary look
- Requires K-36361 Volute bath drain trim (sold separately)

## Material

- KOHLER® enameled cast iron bath
- Painted exterior in White
- Reinforced resin pedestal base with Iron Black painted finish
- Brass drain

## Installation

- Freestanding

## Required Products/Accessories

For freestanding installation  
K-36361 Bath drain trim



## Codes/Standards

ASME A112.19.1/CSA B45.2


## KOHLER® Enameled Cast Iron Bath and Shower Base Lifetime Limited Warranty

See website for detailed warranty information.

## Available Colors/Finishes

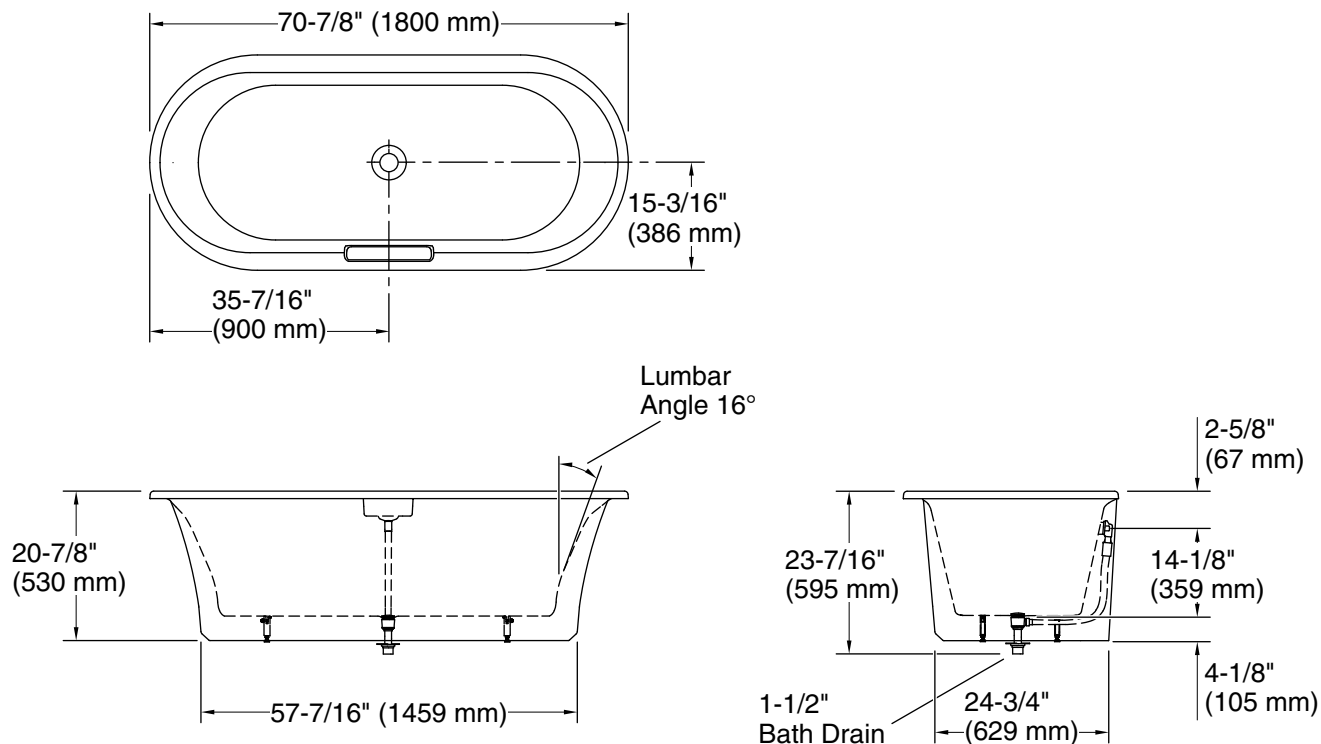
*Color tiles intended for reference only.*

Color	Code	Description
-------	------	-------------

	0	White
---	---	-------



**Volute™**  
70-7/8" x 30-3/8" freestanding bath with base  
**K-29330-0B7**



### Technical Information

All product dimensions are nominal.

Drain location:	Center
Basin area, bottom:	58-1/8" x 22-3/16" (1476 mm x 564 mm)
Basin area, top:	68-1/8" x 25-11/16" (1731 mm x 652 mm)
Weight:	356 lbs (161.5 kg)
Minimum floor load:	57.8 lbs/ft <sup>2</sup> (282.2 kg/m <sup>2</sup> )
Water depth:	13-1/8" (333 mm)
Water capacity:	57.63 gal (218.2 L)

### Notes

Measure your actual product for rough-in details.

Install this product according to the installation instructions.

The hot water supply should be 70% of the capacity of the bath or greater. Installations will vary.