



Volute™

63" x 28-3/8" freestanding bath with base
K-29328-0B7

Features

- Freestanding design creates a striking focal point in your bathing area
- Rectangular basin creates a spacious bathing experience
- Integral lumbar support on both ends
- Slotted overflow allows for deep soaking
- 12-1/16" (306 mm) deep-soaking depth provides a luxurious bathing experience
- Safeguard® slip-resistant surface provides excellent traction underfoot
- Center drain
- Drain and integral overflow preinstalled to reduce installation time
- Contrasting pedestal base adds a dramatic, contemporary look
- Requires K-36361 Volute bath drain trim (sold separately)

Material

- KOHLER® enameled cast iron bath
- Painted exterior in White
- Reinforced resin pedestal base with Iron Black painted finish
- Brass drain

Installation

- Freestanding

Required Products/Accessories

For freestanding installation
K-36361 Bath drain trim



Codes/Standards

ASME A112.19.1/CSA B45.2


KOHLER® Enameled Cast Iron Bath and Shower Base Lifetime Limited Warranty

See website for detailed warranty information.

Available Colors/Finishes

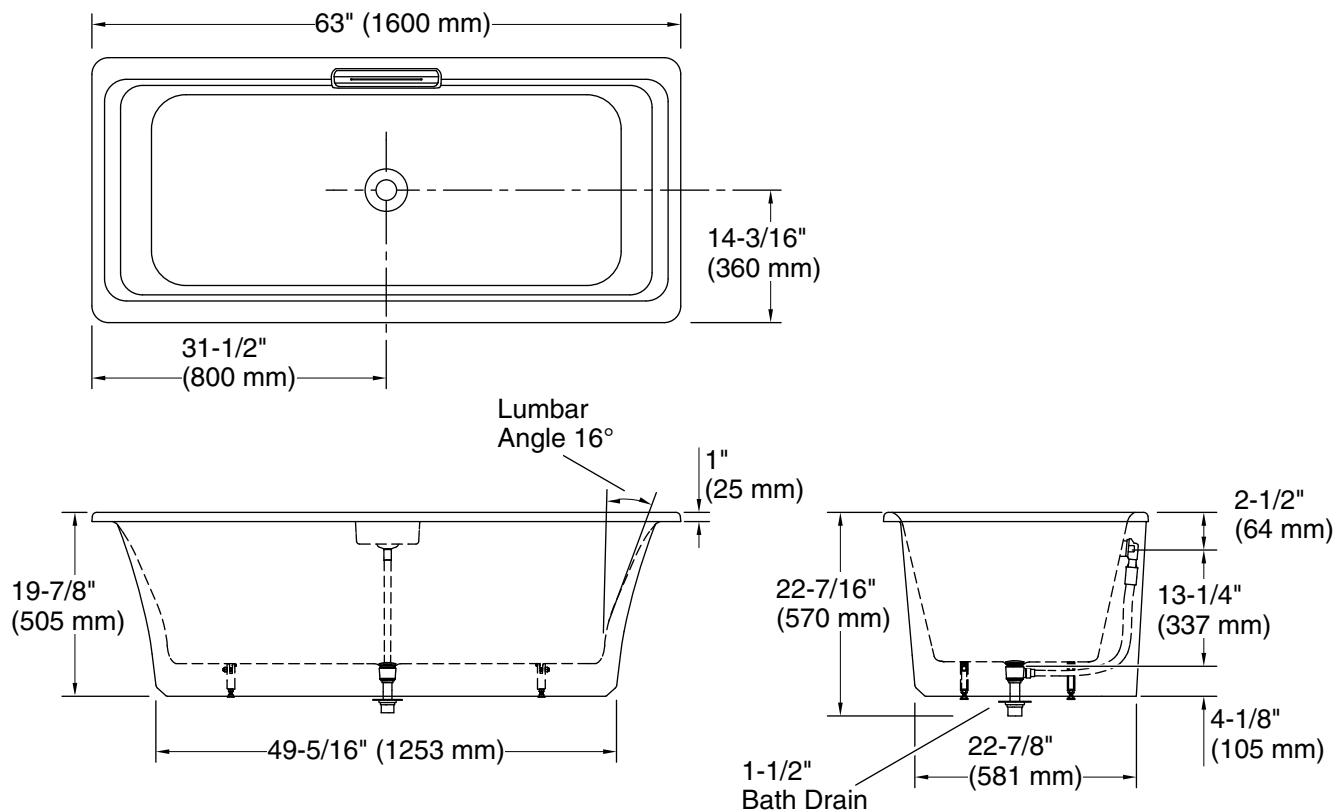
Color tiles intended for reference only.

Color	Code	Description
-------	------	-------------

	0	White
---	---	-------



Volute™
63" x 28-3/8" freestanding bath with base
K-29328-0B7



Technical Information

All product dimensions are nominal.

Drain location:	Center
Basin area, bottom:	50-5/16" x 20-3/8" (1278 mm x 518 mm)
Basin area, top:	60-1/4" x 23-11/16" (1531 mm x 602 mm)
Weight:	338 lbs (153.3 kg)
Minimum floor load:	60.2 lbs/ft ² (293.9 kg/m ²)
Water depth:	12-1/8" (308 mm)
Water capacity:	45.97 gal (174 L)

Notes

Measure your actual product for rough-in details.

Install this product according to the installation instructions.

The hot water supply should be 70% of the capacity of the bath or greater. Installations will vary.