



**Parallel®**  
Double toilet paper holder  
**K-21897**

**Features**

- Holds two rolls of toilet paper
- Coordinates with other products in the Parallel collection

**Material**

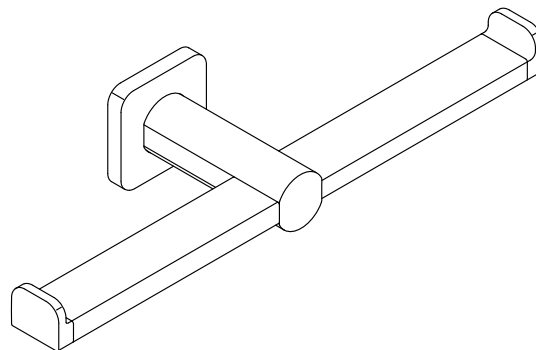
- Premium metal construction for durability and reliability
- KOHLER finishes resist corrosion and tarnishing

**Recommended Products/Accessories**

K-23729 Stainless steel cleaner

**Included Components**

Additional Components:  
Installation hardware



**Codes/Standards**





None Applicable

**KOHLER® Faucet Lifetime Limited Warranty**

See website for detailed warranty information.

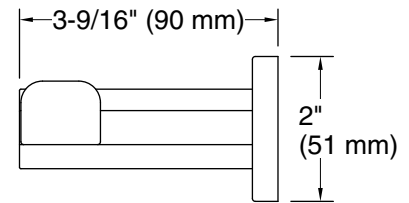
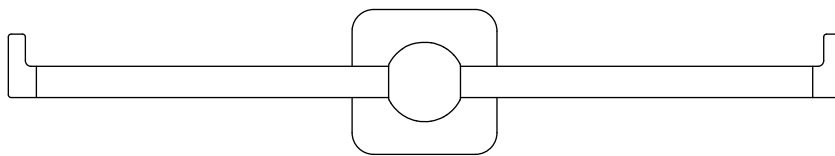
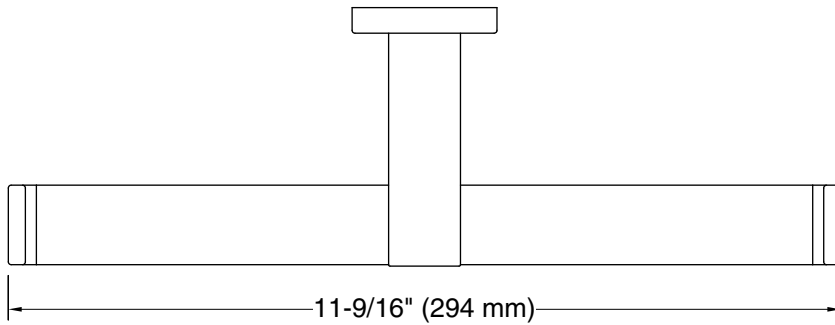
**Available Colors/Finishes**

*Color tiles intended for reference only.*

Color	Code	Description
	CP	Polished Chrome
	BN	Vibrant® Brushed Nickel
	BL	Matte Black
	2MB	Vibrant® Brushed Moderne Brass



**Parallel®**  
Double toilet paper holder  
**K-21897**



### Technical Information

All product dimensions are nominal.

Material: Zinc, Stainless Steel

### Notes

Install this product according to the installation instructions.

**CAUTION:** Risk of personal injury. Do not install these products in any area where they are likely to be used inadvertently as a grab bar or support bar. These products are not designed or intended for use as a grab bar or support bar.