



Stoneridge™

38" x 38" alcove shower base, center drain
K-44163

Features

- Low threshold assures ease of entry and exit of the shower space
- Honed surface provides improved slip resistance (tested in accordance with DIN EN 16165:2023-02 Annex A)
- Three-sided integral flange
- Complements traditional and contemporary bathroom designs
- Allows for quick and easy mortarless installation

Material

- KOHLER Lithocast® cast resin

Installation

- Alcove
- Center drain
- For residential and hospitality use

Recommended Products/Accessories

K-9132 Shower Drain



ADA

Codes/Standards

CSA B45.5/IAPMO Z124

ASTM E162

ASTM E662

ADA

KOHLER® Plastic Baths and Shower Bases Lifetime Limited Warranty

See website for detailed warranty information.

Available Colors/Finishes

Color tiles intended for reference only.

Color	Code	Description
-------	------	-------------



HW1	Honed White
-----	-------------

1-800-4KOHLER (1-800-456-4537)

Kohler Co. reserves the right to make revisions without notice to product specifications.

For the most current Specification Sheet, go to www.kohler.com USA or www.kohler.ca Canada

6-2-2025 19:47 - US/CA

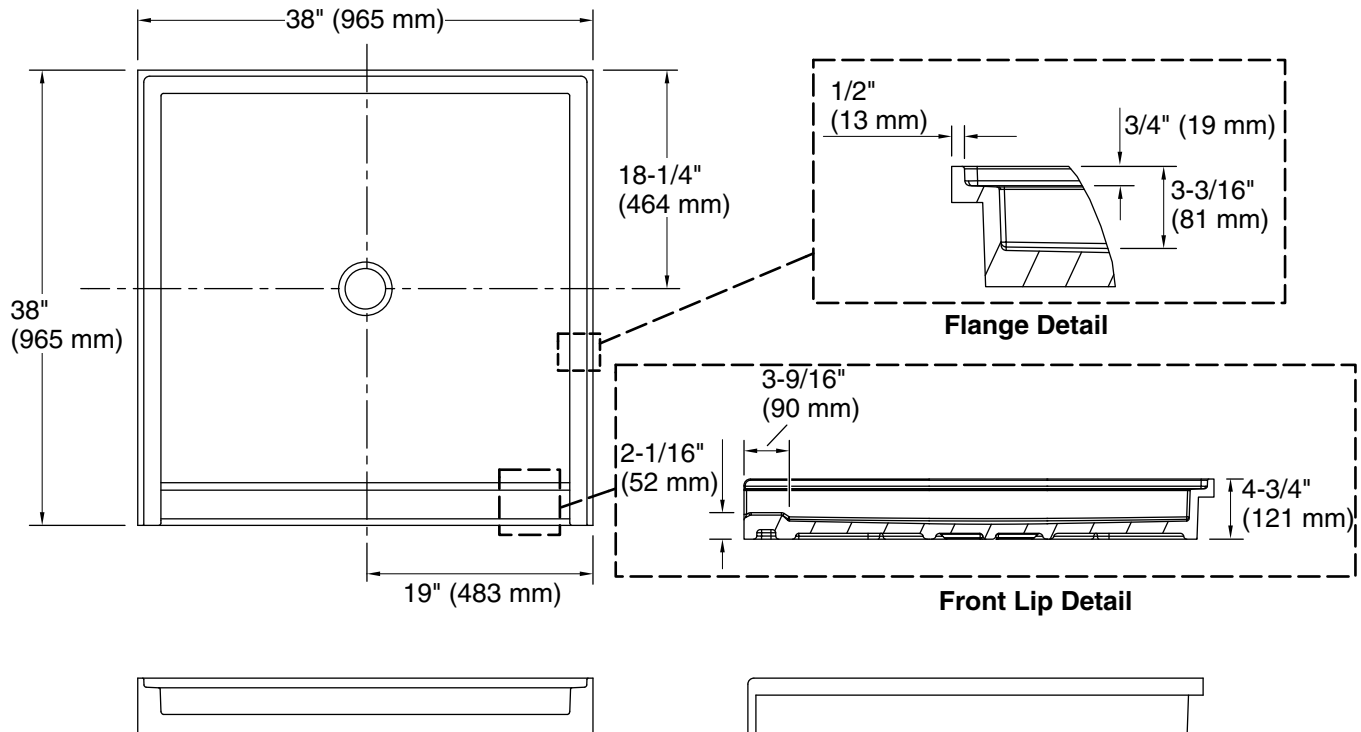
THE BOLD LOOK
OF **KOHLER®**



Stoneridge™

38" x 38" alcove shower base, center drain

K-44163



Technical Information

All product dimensions are nominal.

Drain location: Center

Weight: 111 lbs (50.3 kg)

Notes

Measure your actual product for rough-in details.

Install this product according to the installation instructions.

ADA compliant when installed to the specific requirements of these regulations.