

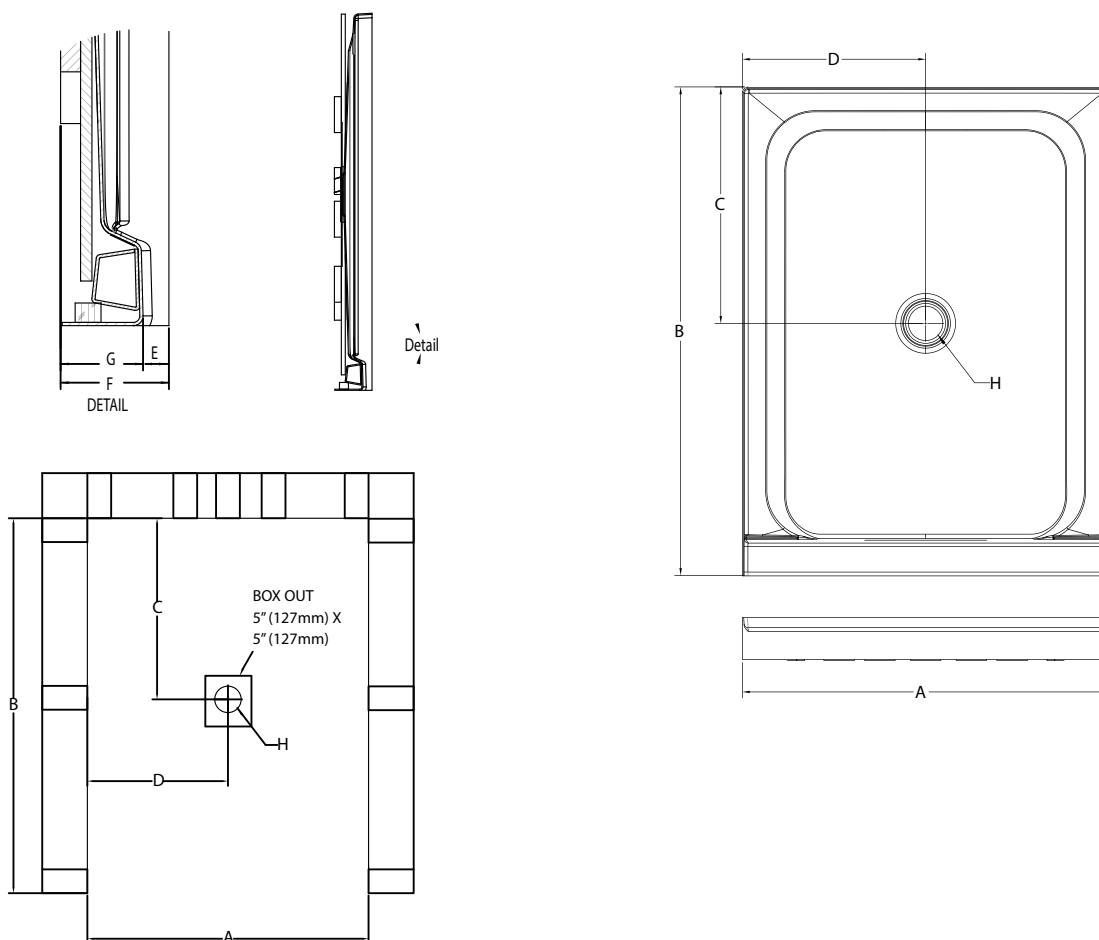


3648 Catalina™ Shower Pan

TECHNICAL SPECIFICATIONS

Dimensions	
Weight (Empty)	50 lbs (23 kg)
Weight (Packaged)	55 lbs (25 kg)
Overall Dimensions	36" (915 mm) x 48" (1220 mm) x 3-3/16" (81 mm)
Drain Location	Center
Total Weight (Floor Loading)	29 lbs/ft ² (142 kg/m) ²
Water Pressure Requirement	N/A
A. Overall Width	36" (915 mm)
B. Overall Depth (Includes Nailing Flange)	48" (1220 mm)
C. Drain Rough-In (From Back Wall)	24-13/16" (630 mm)
D. Drain Rough-In (From Side Wall)	18" (457 mm)
E. Flange Height	1" (25.4 mm)
F. Overall Height (Includes Nailing Flange)	4-3/16" (106 mm)
G. Skirt Height	3-3/16" (81 mm)
H. Drain Diameter	3-3/8" (86 mm)
Accessories	
Drain Kit with Strainer (Included)	MB28827

KEY DIMENSIONS



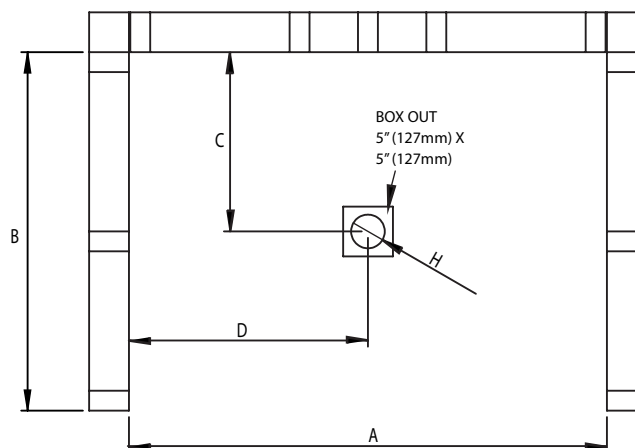
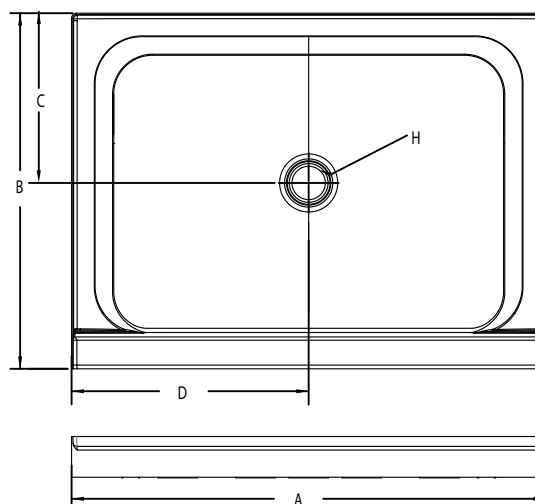
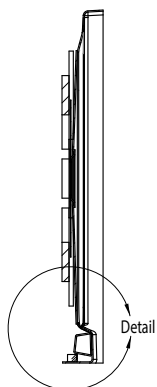
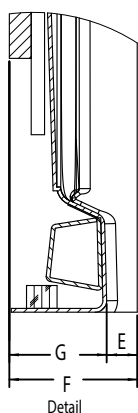


4836 Catalina™ Shower Pan

TECHNICAL SPECIFICATIONS

Dimensions	
Weight (Empty)	50 lbs (23 kg)
Weight (Packaged)	55 lbs (25 kg)
Overall Dimensions (L) x (W) x (H)	48" (1220 mm) x 36" (915 mm) x 3-3/16" (81 mm)
Drain Location	Center
Total Weight (Floor Loading)	29 lbs/ft ² (142 kg/m) ²
Water Pressure Requirement	N/A
A. Overall Width	48" (1220 mm)
B. Overall Depth (Includes Nailing Flange)	36" (915 mm)
C. Drain Rough-In (From Back Wall)	17 3/16" (437 mm)
D. Drain Rough-In (From side wall)	24" (610 mm)
E. Flange Height	1" (25.4 mm)
F. Overall Height (Includes Nailing Flange)	4-3/16" (106 mm)
G. Skirt Height	3-3/16" (81 mm)
H. Drain Diameter	3-3/8" (86 mm)
Accessories	
Drain Kit with Strainer (Sold Separately)	MB28827

KEY DIMENSIONS



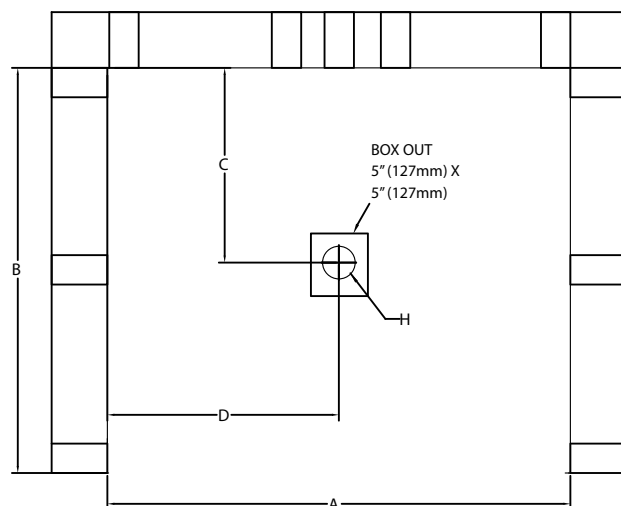
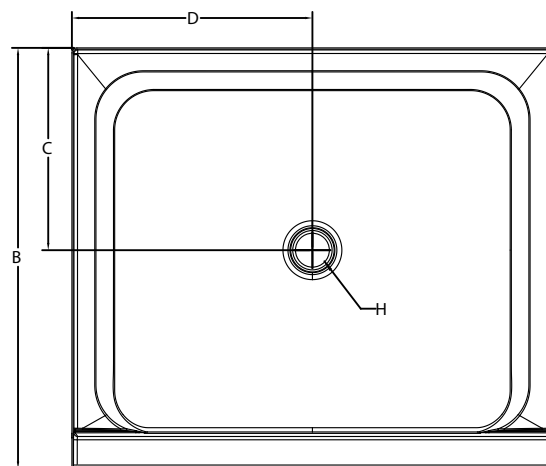
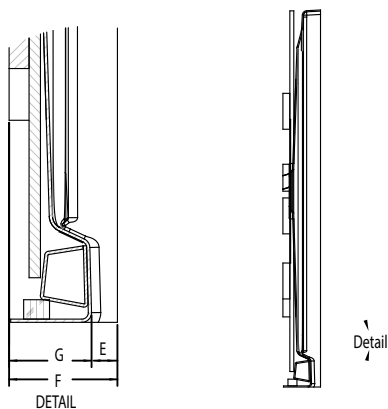


4842 Catalina™ Shower Pan

TECHNICAL SPECIFICATIONS

Dimensions	
Weight (Empty)	53 lbs (24 kg)
Weight (Packaged)	58 lbs (26 kg)
Overall Dimensions	48" (1220 mm) x 42" (1067 mm) x 3-3/16" (81 mm)
Drain Location	Center
Total Weight (Floor Loading)	25.3 lbs/ft ² (124 kg/m) ²
Water Pressure Requirement	N/A
A. Overall Width	48" (1220 mm)
B. Overall Depth (Includes Nailing Flange)	42" (1067 mm)
C. Drain Rough-In (From Back Wall)	20-3/16" (513 mm)
D. Drain Rough-In (From Side Wall)	24" (610 mm)
E. Flange Height	1" (25.4 mm)
F. Overall Height (Includes Nailing Flange)	4-3/16" (106 mm)
G. Skirt Height	3-3/16" (81 mm)
H. Drain Diameter	3-3/8" (86 mm)
Accessories	
Drain Kit with Strainer (Included)	MB28827

KEY DIMENSIONS



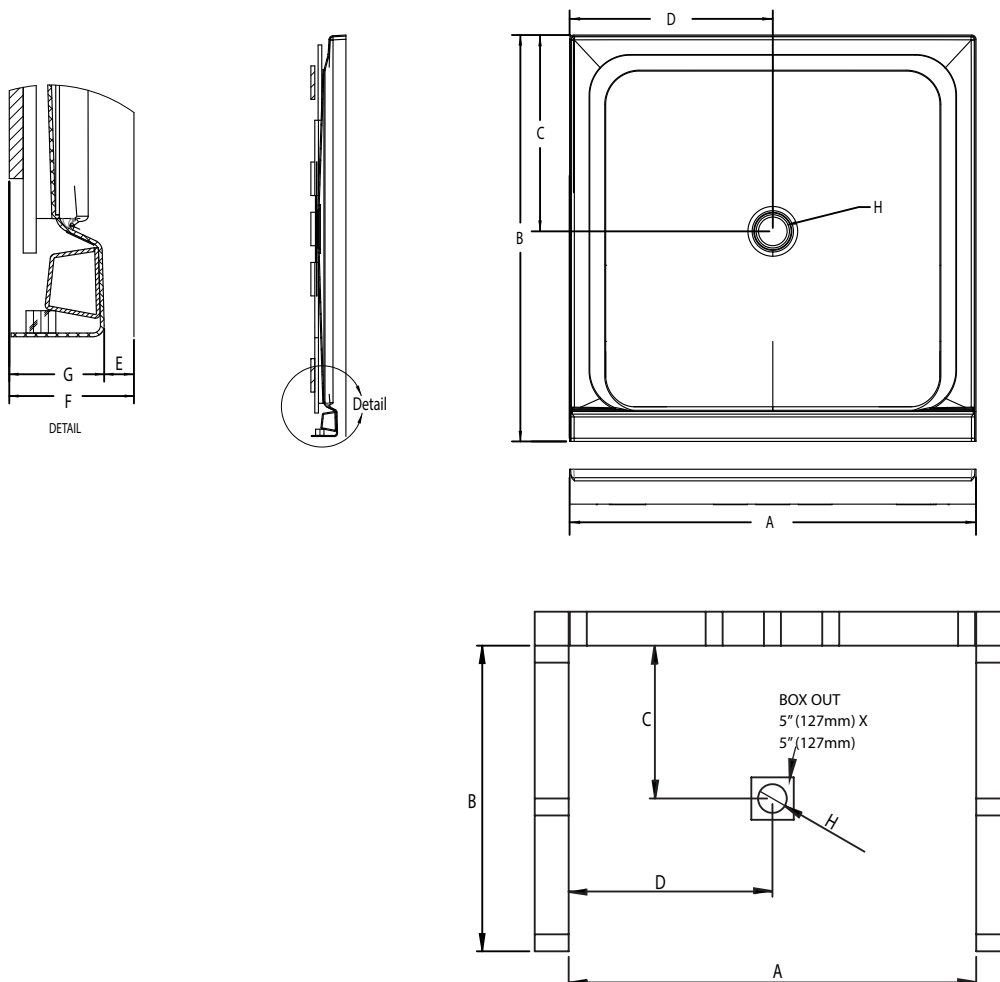


4848 Catalina™ Shower Pan

TECHNICAL SPECIFICATIONS

Dimensions	
Weight (Empty)	55 lbs (25 kg)
Weight (Packaged)	60 lbs (27 kg)
Overall Dimensions	48" (1220 mm) x 48" (1220 mm) x 3-3/16" (81 mm)
Drain Location	Center
Total Weight (Floor Loading)	22.2 lbs/ft ² (109 kg/m) ²
Water Pressure Requirement	N/A
A. Overall Width	48" (1220 mm)
B. Overall Depth (Includes Nailing Flange)	48" (1220 mm)
C. Drain Rough-In (From Back Wall)	23 3/16" (589 mm)
D. Drain Rough-In (From side wall)	24" (610 mm)
E. Flange Height	1" (25.4 mm)
F. Overall Height (Includes Nailing Flange)	4-3/16" (106 mm)
G. Skirt Height	3-3/16" (81 mm)
H. Drain Diameter	3-3/8" (86 mm)
Accessories	
Drain Kit with Strainer (Sold Separately)	MB28827

KEY DIMENSIONS



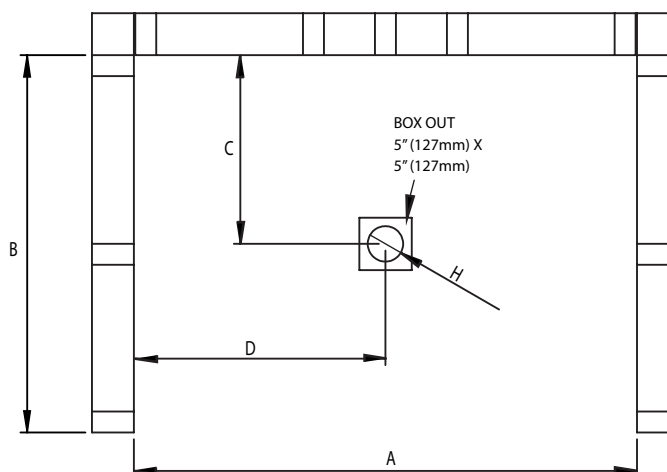
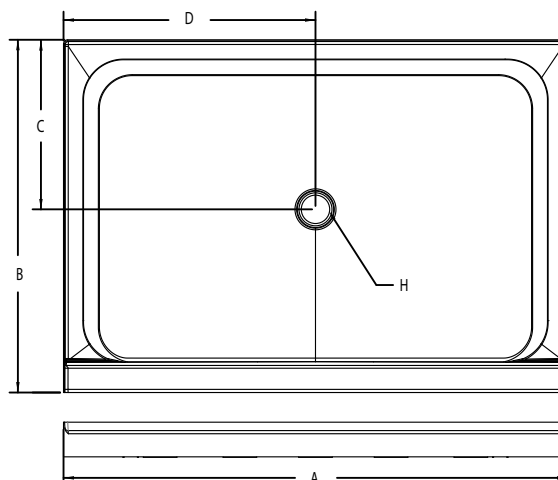
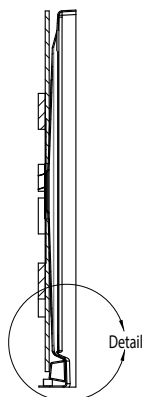
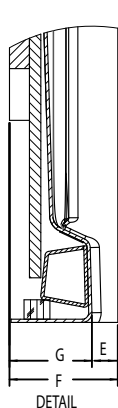


6042 Catalina™ Shower Pan

TECHNICAL SPECIFICATIONS

Dimensions	
Weight (Empty)	68 lbs (31 kg)
Weight (Packaged)	73 lbs (33 kg)
Overall Dimensions	60" (1524 mm) x 42" (1067 mm) x 3-3/16" (81 mm)
Drain Location	Center
Total Weight (Floor Loading)	21 lbs/ft ² (103 kg/m) ²
Water Pressure Requirement	N/A
A. Overall Width	60" (1525 mm)
B. Overall Depth (Includes Nailing Flange)	42" (1067 mm)
C. Drain Rough-In (From Back Wall)	20-3/16" (513 mm)
D. Drain Rough-In (From Side Wall)	30" (762 mm)
E. Flange Height	1" (25.4 mm)
F. Overall Height (Includes Nailing Flange)	4-3/16" (106 mm)
G. Skirt Height	3-3/16" (81 mm)
H. Drain Diameter	3-3/8" (86 mm)
Accessories	
Drain Kit with Strainer (Sold Separately)	MB28827

KEY DIMENSIONS



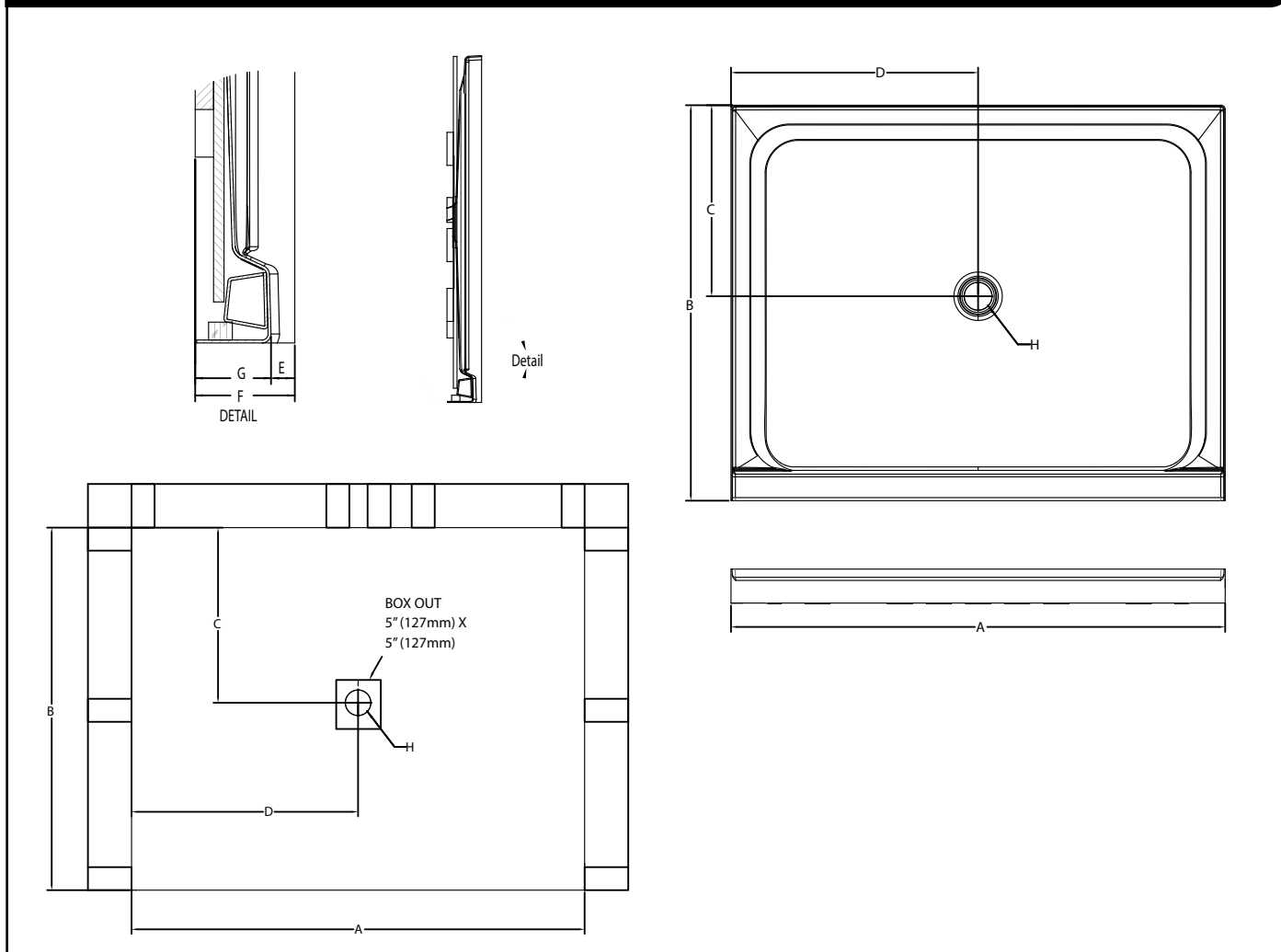


6048 Catalina™ Shower Pan

TECHNICAL SPECIFICATIONS

Dimensions	
Weight (Empty)	71 lbs (32 kg)
Weight (Packaged)	76 lbs (34 kg)
Overall Dimensions	60" (1524 mm) x 48" (1220 mm) x 3-3/16" (81 mm)
Drain Location	Center
Total Weight (Floor Loading)	19.3 lbs/ft ² (94 kg/m) ²
Water Pressure Requirement	N/A
A. Overall Width	60" (1524 mm)
B. Overall Depth (Includes Nailing Flange)	48" (1220 mm)
C. Drain Rough-In (From Back Wall)	23-3/16" (589 mm)
D. Drain Rough-In (From Side Wall)	30" (762 mm)
E. Flange Height	1" (25.4 mm)
F. Overall Height (Includes Nailing Flange)	4-3/16" (106 mm)
G. Skirt Height	3-3/16" (81 mm)
H. Drain Diameter	3-3/8" (86 mm)
Accessories	
Drain Kit with Strainer (Included)	MB28827

KEY DIMENSIONS



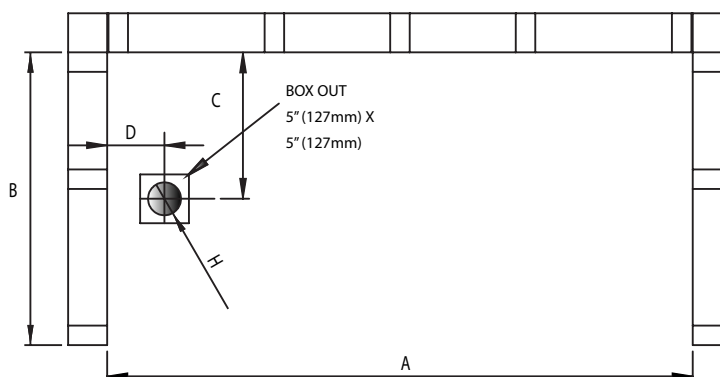
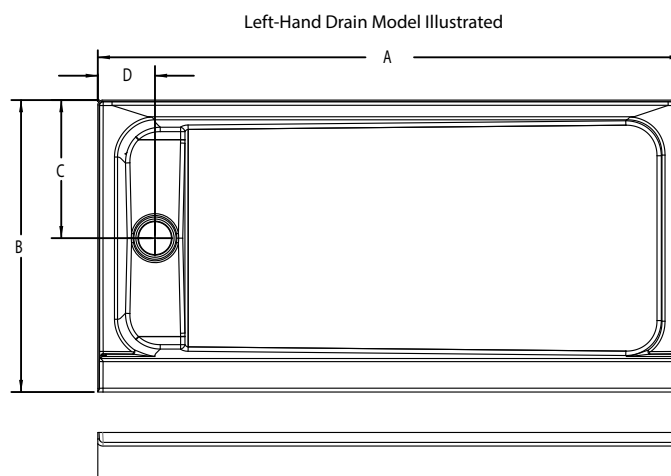
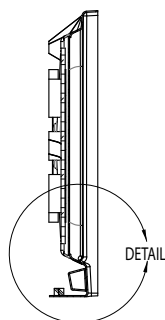
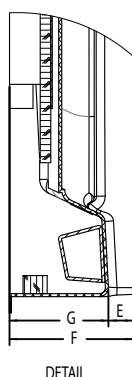


6030 Catalina™ Shower Pan

TECHNICAL SPECIFICATIONS

Dimensions	
Weight (Empty)	55 lbs (25 kg)
Weight (Packaged)	60 lbs (27 kg)
Overall Dimensions	60" (1524 mm) x 30" (762 mm) x 4-1/8" (105 mm)
Drain Location	Left or Right Hand
Total Weight (Floor Loading)	28 lbs/ft ² (139 kg/m) ²
Water Pressure Requirement	N/A
A. Overall Width	60" (1524 mm)
B. Overall Depth (Includes Nailing Flange)	30" (762 mm)
C. Drain Rough-In (From Back Wall)	14-3/16" (361 mm)
D. Drain Rough-In (From Side Wall)	5-7/8" (150 mm)
E. Flange Height	1" (25.4 mm)
F. Overall Height (Includes Nailing Flange)	5-1/8" (131 mm)
G. Skirt Height	4-1/8" (105 mm)
H. Drain Diameter	3-3/8" (86 mm)
Accessories	
Drain Kit with Strainer (Included)	MB28827
Drain Cover (Sold Separately)	MM17959 (WHITE)

KEY DIMENSIONS



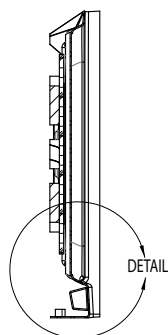
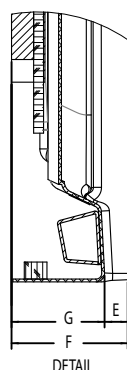


6032 Catalina™ Shower Pan

TECHNICAL SPECIFICATIONS

Dimensions	
Weight (Empty)	59 lbs (27 kg)
Weight (Packaged)	64 lbs (29 kg)
Overall Dimensions	60" (1524 mm) x 32" (813 mm) x 4-1/8" (105 mm)
Drain Location	Left or Right Hand
Total Weight (Floor Loading)	27 lbs/ft ² (131 kg/m) ²
Water Pressure Requirement	N/A
A. Overall Width	60" (1524 mm)
B. Overall Depth (Includes Nailing Flange)	32" (813 mm)
C. Drain Rough-In (From Back Wall)	15-3/16" (386 mm)
D. Drain Rough-In (From Side Wall)	5-7/8" (150 mm)
E. Flange Height	1" (25.4 mm)
F. Overall Height (Includes Nailing Flange)	5-1/8" (131 mm)
G. Skirt Height	4-1/8" (105 mm)
H. Drain Diameter	3-3/8" (86 mm)
Accessories	
Drain Kit with Strainer (Included)	MB28827
Drain Cover (Sold Separately)	MM17959 (WHITE)

KEY DIMENSIONS



Left-Hand Drain Model Illustrated

