

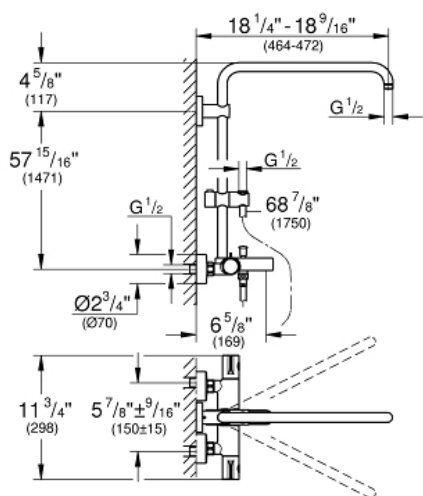
Shower system with bath thermostat for wall mounting

MODEL # 26490000

Pure Freude an Wasser



GROHE America, Inc | 200 North Gary Avenue, Suite G, Roselle, IL 60172
Phone: +1 (800) 444-7643 | Fax: +1 (800) 225-2778 | us-customerservice@grohe.com



Product Description:

Shower system with bath thermostat for wall mounting

Standard Specification:

- 17 3/4" horizontal swivel shower arm
- Exposed thermostat with Aquadimmer that diverts between hand shower and showerhead
- Tub Spout
- Showerhead and hand shower (not included)
- Bar with adjustable height hand shower holder
- Rotaflex metal shower hose 69" (1750mm)
- **GROHE TurboStat** Compact cartridge with wax thermoelement
- **GROHE StarLight** chrome finish
- Exposed thermostatic temperature control with SafeStop at 100°F/38°C
- Inner WaterGuide for a longer life
- Twistfree to prevent hose from twisting
- Min. recommended pressure: 15 psi
- Two discrete functions (non-shared)
- Includes adaptors for easy installation (depth adjustable)
- 6 5/8" Tub Spout reach
- Tub Spout Flow Rate: 5.3 gpm (20 L/min) at 45 PSI
- ADA Compliant handles
- Protected against backflow

Color:

□ 26490000 StarLight Chrome