

NOTES:

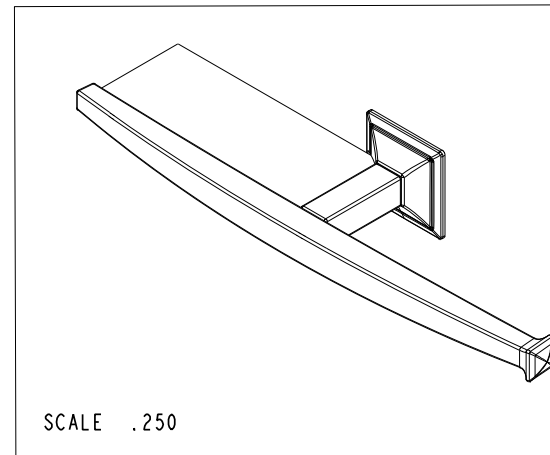
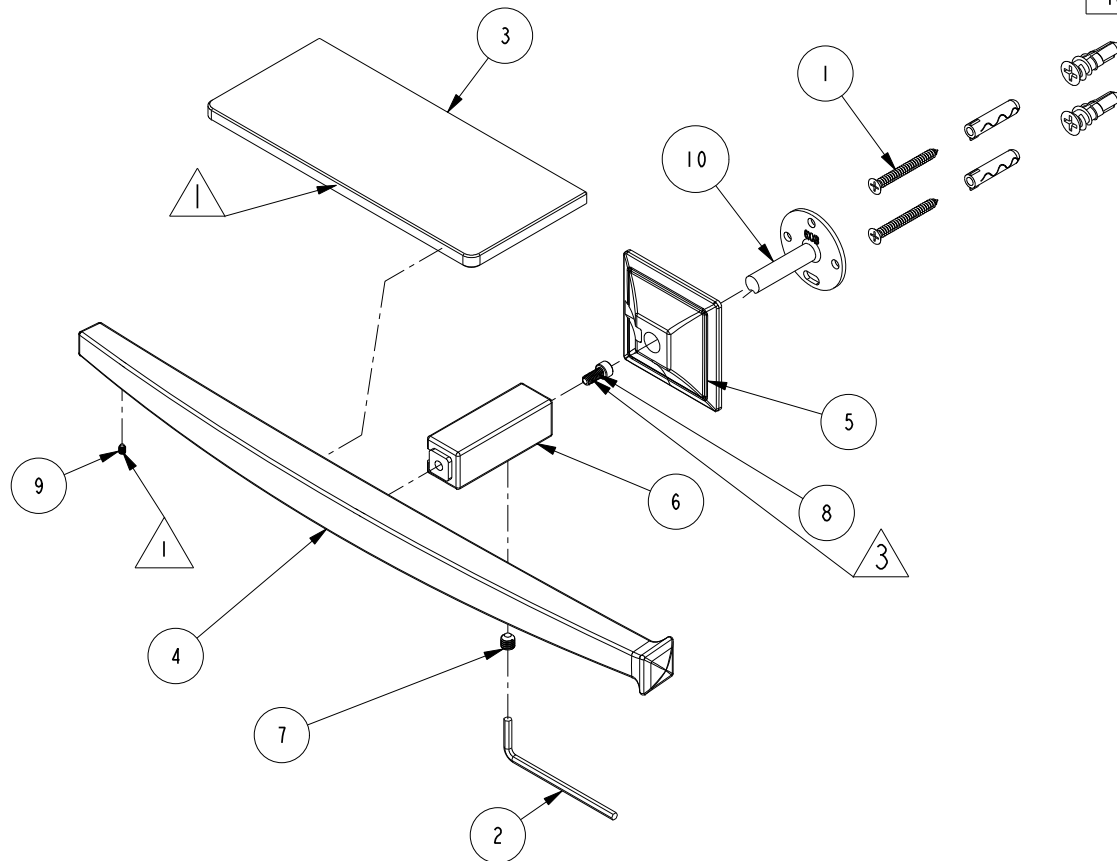
1 APPLY DP420 EPOXY.

2. BAG ITEMS 1 AND 2. ASSEMBLE ALL REMAINING ITEMS.

3 APPLY LOCTITE 680.

BILL OF MATERIAL (CURRENT LEVEL)

ITEM	PT/ASSY	DESCRIPTION	TYPE	QTY.
1	I-206_47XX	HARDWARE PACK	ASSEMBLY	1
2	10615	3MM ALLOY STEEL HEX KEY	PART	1
3	40559	SHELF GLASS	PART	1
4	40560	TISSUE HOLDER POST W/ SHELF	PART	1
5	40561	TISSUE HOLDER ESCUTCHEON	PART	1
6	40589	TISSUE HOLDER POST	PART	1
7	92031	SCRW, M6 X 1 X 6 SKT HD CUP PT SS	PART	1
8	92527	SCRW, 8-32 X 3/8 SKT CAP HD SS	PART	1
9	92838	SCRW, 4-40 X 1/8 SKT HD CAP SS W/NYLON TIP	PART	1
10	6XXB	MOUNTING BRACKET	PART	1



COPYRIGHT 2005 GINGER. THESE DRAWINGS AND THE DESIGNS DEPICTED HEREIN ARE THE PROPRIETARY PROPERTY OF GINGER. ANY USE OR REPRODUCTION IS SUBJECT TO THE EXPRESS APPROVAL OF GINGER. UNAUTHORIZED USE IS STRICTLY PROHIBITED. ALL RIGHTS RESERVED.

GINGER

2001 CARNEGIE AVE.
SANTA ANA CA 92705
(949) 417-5207

OPEN TOILET TISSUE HOLDER W/ SHELF

ASSY. NO.

4906-1

SCALE .312

REF.

SHEET 1 OF 2

A

EN-2749

05/06/14

-

EN-2087

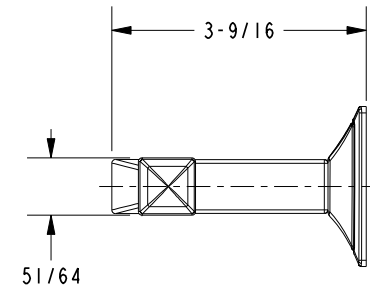
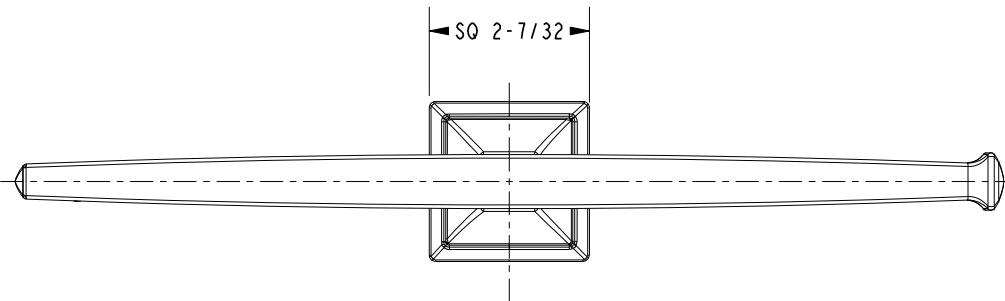
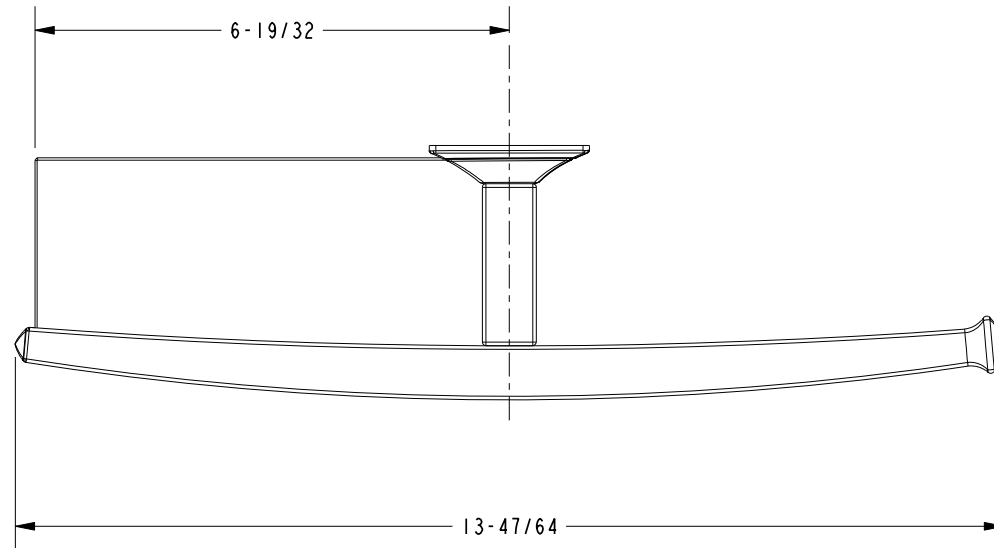
09/20/13

REV

REV DESC

DATE

SPECIFICATION DWG



DIMENSIONS ARE IN INCHES AND AN APPROXIMATION OF A TYPICAL INSTALLATION

COPYRIGHT 2005 GINGER. THESE DRAWINGS AND THE DESIGNS DEPICTED HEREIN ARE THE PROPRIETARY PROPERTY OF GINGER. ANY USE OR REPRODUCTION IS SUBJECT TO THE EXPRESS APPROVAL OF GINGER. UNAUTHORIZED USE IS STRICTLY PROHIBITED. ALL RIGHTS RESERVED.

GINGER

2001 CARNEGIE AVE.
SANTA ANA, CA 92705
(949) 417-5207

DWG NO.	4906-1	REV	A
SCALE	.375	REF.	-
SHEET	2	OF	2