
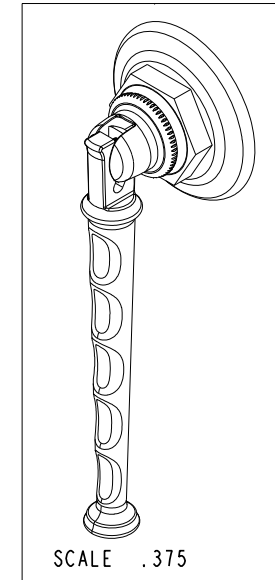
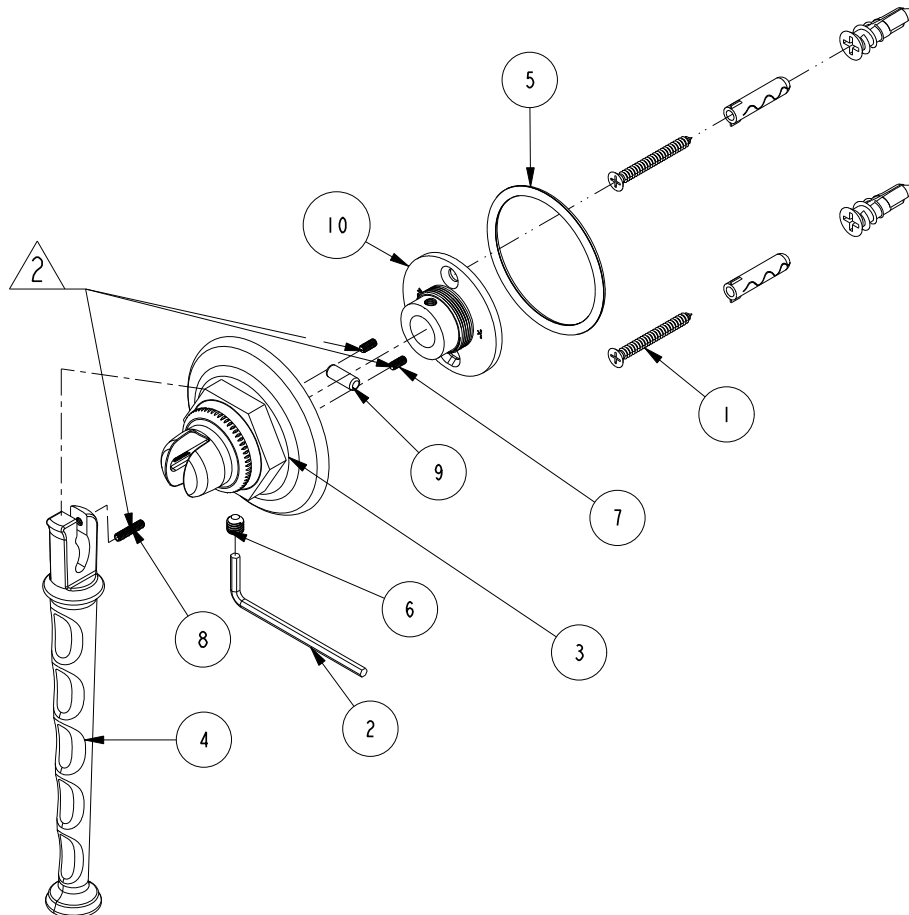


NOTES:

- (N1) 1. FIT / FORM / FUNCTION SHALL FOLLOW PS-E.008.
- (N2)  APPLY LOCTITE 680.
- (N3) 3. PLACE ITEM# 1, 2 AND 5 IN SEPARATE BAG

BILL OF MATERIAL (CURRENT LEVEL)

ITEM	PT/ASSY	DESCRIPTION	TYPE	QTY.
1	1-206	HARDWARE PACK	ASSEMBLY	1
2	10615	HEX KEY, 3MM ALLOY STEEL	PART	1
3	40577	VALET HOOK ESCUTCHEON	PART	1
4	40578	VALET HOOK ARM	PART	1
5	91647	O-RING, #2-226, EPDM, 65-75 DURO	PART	1
6	92031	SCRW, M6 X 1 X 6 SKT HD CUP PT SS	PART	1
7	92195	SCRW, 4-40 X 1/4 SKT HD CUP POINT SS	PART	2
8	92446	SCRW, 4-40 X 1/2 SKT HD CUP POINT SS	PART	1
9	92840	PIN, 3/16 X 1/2 DOWEL SS	PART	1
10	45XX	MOUNTING FLANGE	PART	1



-	C	EN-2880	04/27/15	J.M.
-	B	EN-2717	04/04/014	-
-	A	EN-2647	11/19/13	-
-	-	EN-2086	09/01/13	-
ZONE	REV	DESCRIPTION	DATE	APPROVED

COPYRIGHT 2005 BRASSTECH, INC.
 THESE DRAWINGS AND THE DESIGNS
 DEPICTED HEREIN ARE THE PROPRIETARY
 PROPERTY OF BRASSTECH. ANY USE
 OR REPRODUCTION IS SUBJECT TO
 THE EXPRESS APPROVAL OF BRASSTECH.
 UNAUTHORIZED USE IS STRICTLY
 PROHIBITED. ALL RIGHTS RESERVED.

TESTING	-	-	-
ASSEMBLY	-	-	-
PLATING	-	-	-
POLISHING	-	NEXT ASSY	USED ON
MACHINING	-	APPLICATION	
TOOLING FIXTURE #	REMOVE ALL BURRS AND SHARP EDGES		

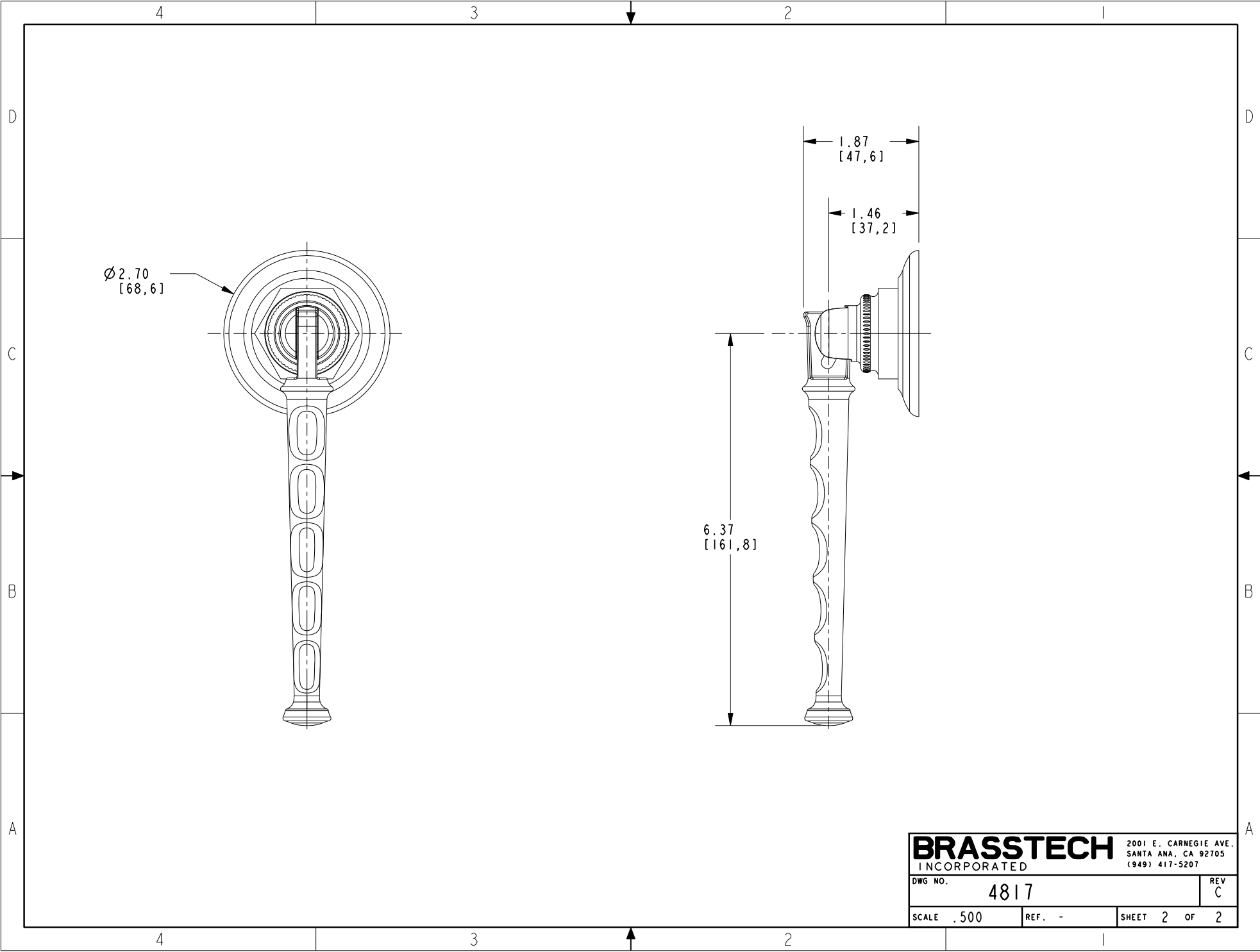
UNITS ARE: INCHES [MM]	
TOLERANCES ARE:	
FRACTIONS DECIMALS	ANGLES
±1/16"	±1°
.X ±.1 [2.5]	
.XX ±.06 [1.5]	
(X.XXX) DENOTES CRITICAL DIMS.	
ALL THREADS ARE CRITICAL	
DRAWN	-
CHECKED	-
APPROVED	-

BRASSTECH 2001 CARNEGIE AVE.
 INCORPORATED SANTA ANA, CA 92705
 (949) 417-5207

VALET HOOK

DWG NO. **4817** REV **C**

SCALE .375 REF. - SHEET 1 OF 2



BRASSTECH		2001 E. CARNEGIE AVE.	
INCORPORATED		SANTA ANA, CA 92705	
		(949) 417-5207	
DWG NO.	4817	REV	C
SCALE .500	REF. -	SHEET 2	OF 2