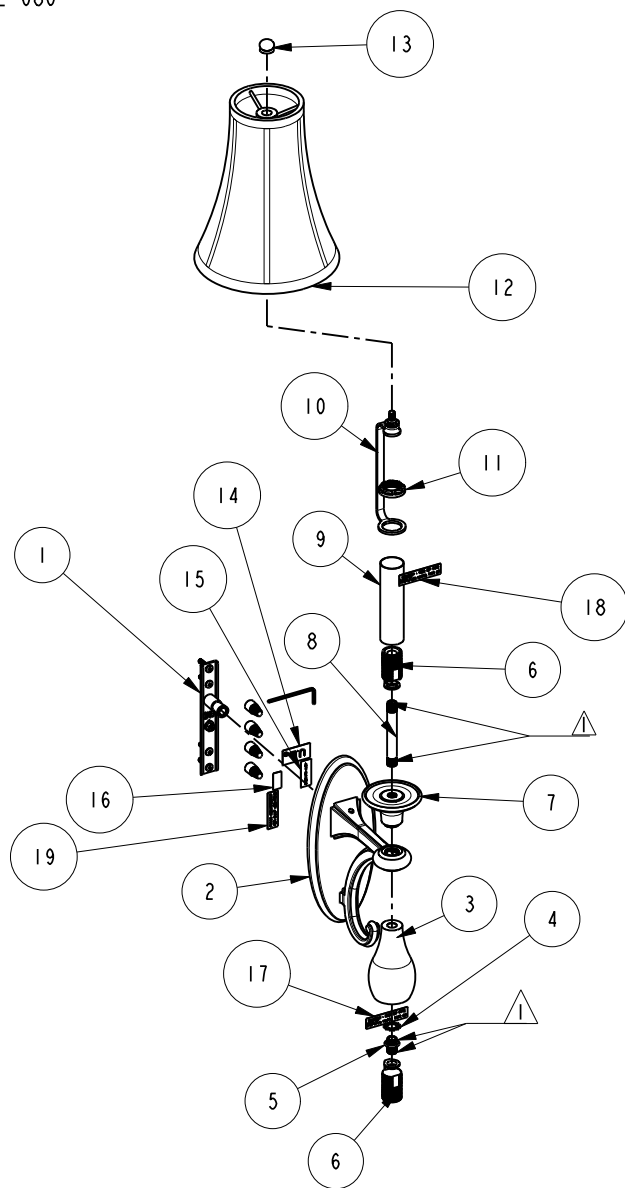
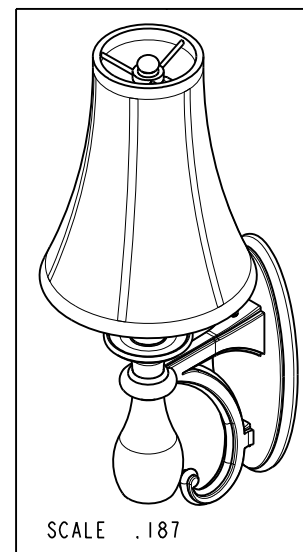


1 APPLY LOCTITE 680



BILL OF MATERIAL (CURRENT LEVEL)

ITEM	PT/ASSY	DESCRIPTION	TYPE	QTY.
1	CB-007	HARDWARE PACK	ASSEMBLY	1
2	2781-BA	CIRCE BODY ASSEMBLY	ASSEMBLY	1
3	2781-NS	NIGHT SHADE	PART	1
4	92379	WSHR, 10.5 ID X 18 OD X 0.9MM THK, EXT. TOOTH LOCK, SS	PART	1
5	1881N-SN	SHOULDER NIPPLE	PART	1
6	CL7-15	THREADED BODY CANDELABRA LAMP HOLDER	PART	2
7	2781-CC	CANDLE CUP	PART	1
8	92275	1/8" X 3" NPT x NPT PIPE NIPPLE, GALVANIZED	PART	1
9	2781-CT	CANDLE TUBE	PART	1
10	2781-SS	SHADE SUPPORT	ASSEMBLY	1
11	CL-PR	PLASTIC RING	PART	1
12	2781-TS	LAMP SHADE	PART	1
13	2781-SF	SHADE FINIAL	PART	1
14	98006	LABEL, UL LISTED	PART	1
15	98079	LABEL, MONTH YEAR E163986	PART	1
16	98012	LABEL, WALL MOUNT ONLY	PART	1
17	98082	LABEL, 4 WATTS MAX	PART	1
18	98083	LABEL, 60 WATTS MAX	PART	1
19	98113	LABEL,PNXXX INCANDESCENT FOR DAMP LOCATIONS	PART	1



COPYRIGHT 2005 GINGER. THESE DRAWINGS AND THE DESIGNS DEPICTED HEREIN ARE THE PROPRIETARY PROPERTY OF GINGER. ANY USE OR REPRODUCTION IS SUBJECT TO THE EXPRESS APPROVAL OF GINGER. UNAUTHORIZED USE IS STRICTLY PROHIBITED. ALL RIGHTS RESERVED.

GINGER

2001 E. CARNEGIE AVE.
SANTA ANNA CA 92705
(949) 417-5207

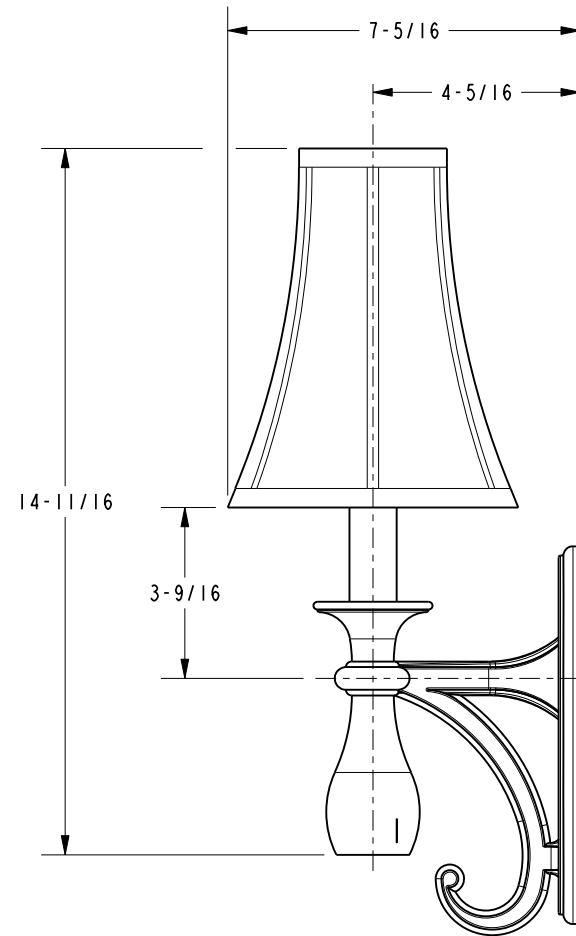
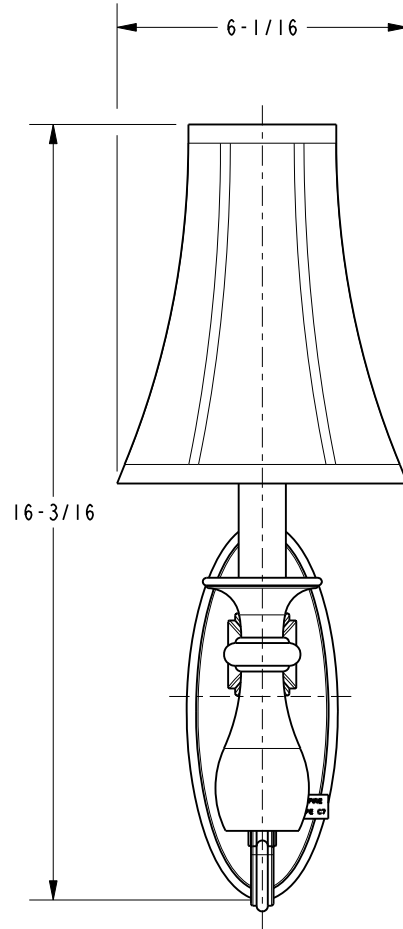
CIRCE LIGHT

ASSY. NO. 2781

SCALE .125 REF. - SHEET 1 OF 2 REV REV DESC DATE

D	EN-2503	04/17/13
C	EN-2352	11/12/12
B	EN-1356	11/30/09
A	EN-1132	06/12/09

SPECIFICATION DWG



DIMENSIONS ARE IN INCHES AND AN APPROXIMATION OF A TYPICAL INSTALLATION

COPYRIGHT 2005 GINGER. THESE DRAWINGS AND THE DESIGNS DEPICTED HEREIN ARE THE PROPRIETARY PROPERTY OF GINGER. ANY USE OR REPRODUCTION IS SUBJECT TO THE EXPRESS APPROVAL OF GINGER. UNAUTHORIZED USE IS STRICTLY PROHIBITED. ALL RIGHTS RESERVED.

GINGER

2001 CARNEGIE AVE.
SANTA ANA, CA 92705
(949) 417-5207

DWG NO.	2781	REV	D
SCALE	.250	REF.	-
SHEET	2	OF	2