

PRODUCT SPECIFICATIONS

Allure Kitchen Faucet with Side Spray. Faucet has a flow rate of 1.5 GPM, and is made of Stainless Steel material, with a Ceramic Disc valve. Faucet requires 2 faucet holes.

Mounting Type:	Deck Mount
Special Features:	Low Flow
Spray Type:	Side
Finish:	Satin Stainless Steel
Handle Type:	Lever Handle
Deck Clearance:	7-3/4"
Spout Reach:	8"
Spout Height:	13-3/4"
Hole Drillings:	2
Material:	Stainless Steel
Valve Type:	Ceramic Disc
Valve Connection:	1/2" IPT
Flow Rate:	1.5 GPM
Faucet Hole Size (min):	1-1/2"
Spout Swing Rotation:	360°



Included with Product: Retractable side spray

AMERICAN PRIDE. A LIFETIME TRADITION. Like your family, the Elkay family has values and traditions that endure. For almost a century, Elkay has been a family-owned and operated company, providing thousands of jobs that support our families and communities.

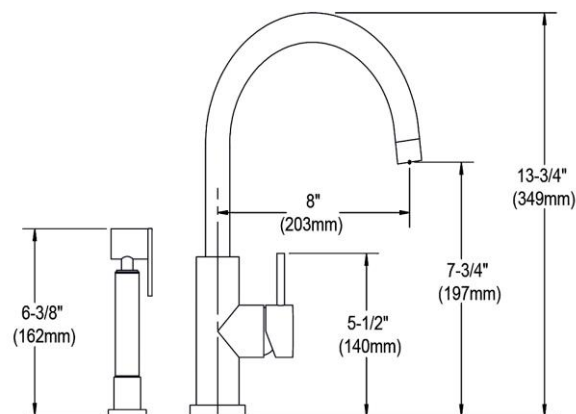


Product Compliance: ADA
ASME A112.18.1/CSA B125.1
NSF 372 (lead free)
NSF 61

[Clean and Care Manual \(PDF\)](#)

[Installation Instructions \(PDF\)](#)

[Limited Lifetime Warranty \(PDF\)](#)



PART: _____ QTY: _____

PROJECT: _____

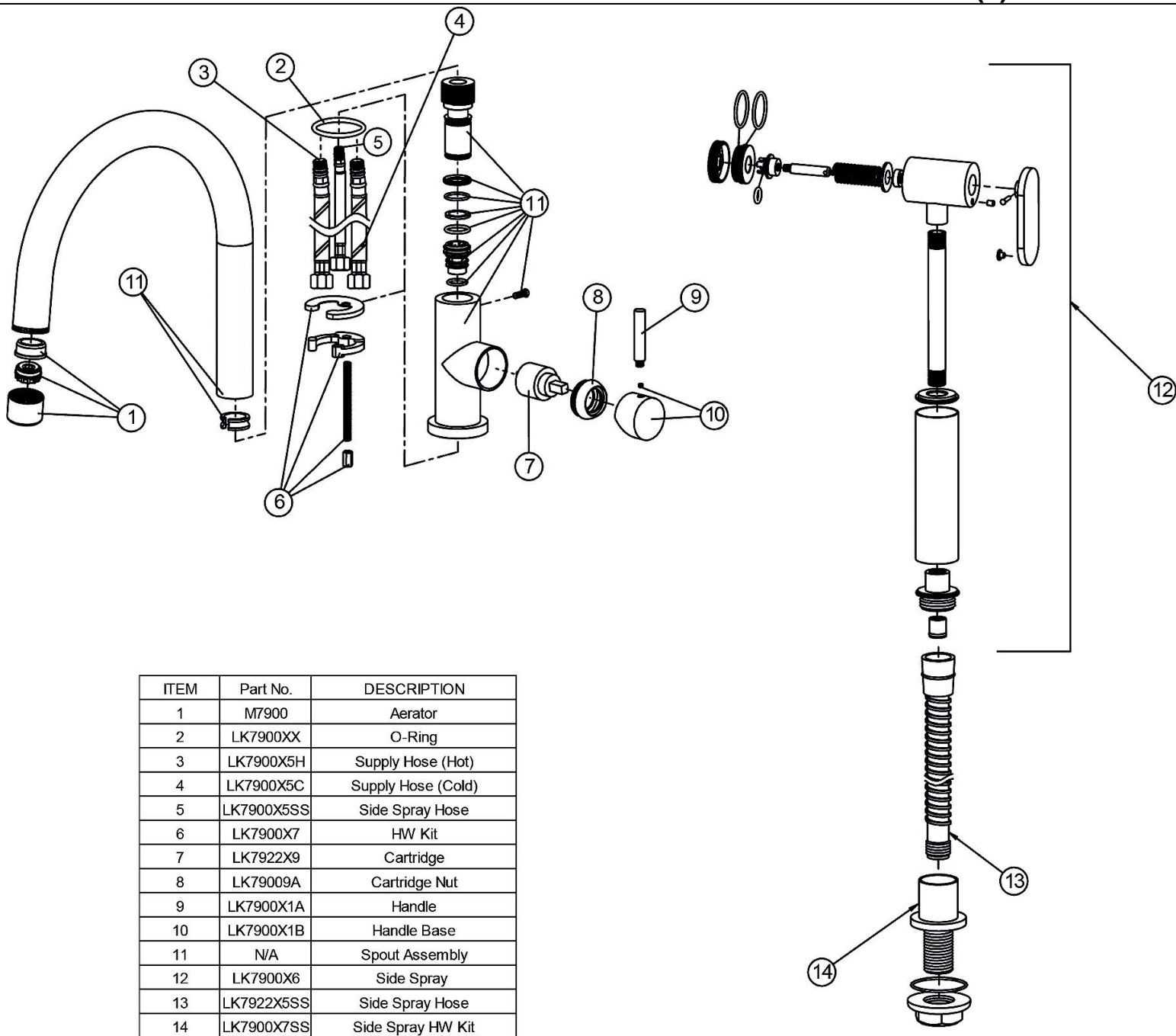
CONTACT: _____

DATE: _____

NOTES: _____

APPROVAL: _____

In keeping with our policy of continuing product improvement, Elkay reserves the right to change product specifications without notice. Please visit elkay.com for the most current version of Elkay product specification sheets. This specification describes an Elkay product with design, quality, and functional benefits to the user. When making a comparison of other producers' offerings, be certain these features are not overlooked.



In keeping with our policy of continuing product improvement, Elkay reserves the right to change product specifications without notice. Please visit elkay.com for the most current version of Elkay product specification sheets. This specification describes an Elkay product with design, quality, and functional benefits to the user. When making a comparison of other producers' offerings, be certain these features are not overlooked.