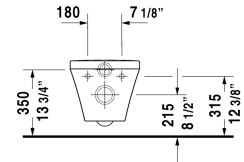
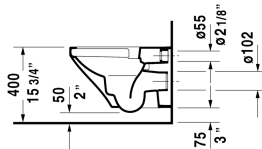
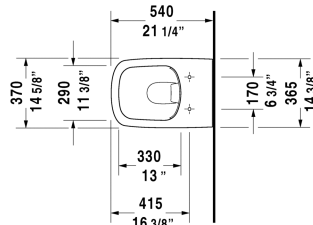


Toilet wall-mounted Duravit Rimless® # 2538090092

| < 14 5/8" Inch > |



| Toilet wall-mounted Duravit Rimless® | Dimension | Weight | Order number |
|--|------------------------|--------|--------------|
| rimless, cUPC listed, washdown model | | | |
| Colors | | | |
| 00 White | | | |
| Variant | | | |
| ♣ 1.6/0.8 gpf | 14 5/8" x 21 1/4" Inch | 56 lb | 2538090092 |
| Sanitary ceramics with the special WonderGliss surface finish will remain clean and attractive-looking for a long time to come. When ordering WonderGliss please add a "1" as eleventh digit to the model number. | | | |
| Toilet seat and cover hinges stainless steel, without slow close | | | 006371 |
| Toilet seat and cover hinges stainless steel, with slow close, removable | | | 006379 |
| Fixing for wall-mounted bidet and wall-mounted toilet | Ø 1/2" x 7 1/8" Inch | 0.4 lb | 006500 |
| Noise reduction gasket for wall-mounted toilet | | 0.7 lb | 005064 |
| Dual Flush Actuator Sigma 01 White | 9 5/8" x 6 1/2" Inch | | 115770 |
| Geberit in-wall tank and carrier width 19 3/4", depth 5 1/2" height (adjustable) 43" - 47" | 19 3/4" x 5 1/2" Inch | 38 lb | 111335 |
| Suitable products | | | |
| Toilet seat and cover hinges stainless steel, without slow close, | | | 006371 |
| Toilet seat and cover hinges stainless steel, with slow close, removable, | | | 006379 |

All drawings contain the necessary measurements which are subject to standard tolerances. They are stated in inch & mm and are non-binding. Exact measurements, in particular for customized installation scenarios, can only be taken from the finished ceramic piece.