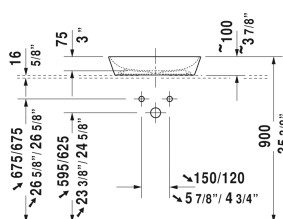
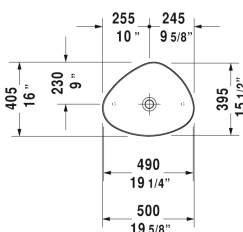


Cape Cod Washbowl # 23395000001

| < 19 5/8" Inch > |



Washbowl	Dimension	Weight	Order number
without tap platform, without overflow, hardware included, 19 5/8" Inch			
Colors			
00 White			
Variant			
☒	19 5/8" x 16" Inch	12.8 lb	23395000001
Infobox			
Made of DuraCeram			
Design Siphon			
		3.3 lb	005036
Slotted waste			
	2" Inch	0.7 lb	005024
Suitable products			
Vanity unit wall-mounted 1 pull-out compartment, countertop including one cut-out, for 1 above-counter basin central, 31 1/2" x 21 5/8" Inch	31 1/2" x 21 5/8" Inch		KT6694
Vanity unit wall-mounted 1 pull-out compartment, countertop including one cut-out, for 1 above-counter basin central, 39 3/8" x 21 5/8" Inch	39 3/8" x 21 5/8" Inch		KT6695
Vanity unit wall-mounted 1 pull-out compartment, countertop including one cut-out, for 1 above-counter basin central, 47 1/4" x 21 5/8" Inch	47 1/4" x 21 5/8" Inch		KT6696
Vanity unit wall-mounted 2 pull-out compartments, 1 countertop with one cut-out or two cut-outs, for 1 or 2 above-counter basins, 55 1/8" x 21 5/8" Inch	55 1/8" x 21 5/8" Inch		KT6697 B/L/R
Vanity unit wall-mounted 2 drawers, upper drawer including cut-out for siphon and siphon cover, countertop including one cut-out, for 1 above-counter basin central, 31 1/2" x 21 5/8" Inch	31 1/2" x 21 5/8" Inch		KT6654

Cape Cod Washbowl # 23395000001

| < 19 5/8" Inch > |

Vanity unit wall-mounted 2 drawers, upper drawer including cut-out for siphon and siphon cover, countertop including one cut-out, for 1 above-counter basin central, 39 3/8" x 21 5/8" Inch	39 3/8" x 21 5/8" Inch	KT6655
Vanity unit wall-mounted 2 drawers, upper drawer including cut-out for siphon and siphon cover, countertop including one cut-out, for 1 above-counter basin central, 47 1/4" x 21 5/8" Inch	47 1/4" x 21 5/8" Inch	KT6656
Vanity unit wall-mounted 4 drawers, 1 countertop with one cut-out or two cut-outs, drawer beneath basin including cut-out for siphon and siphon cover, for 1 or 2 above-counter basins, 55 1/8" x 21 5/8" Inch	55 1/8" x 21 5/8" Inch	KT6657 B/L/R
Vanity unit wall-mounted 1 pull-out compartment, 1 countertop including one central cut-out, 32 7/8" x 22 1/4" Inch	32 7/8" x 22 1/4" Inch	S19526
Vanity unit wall-mounted 1 pull-out compartment, countertop including one cut-out, 48 5/8" x 22 1/4" Inch	48 5/8" x 22 1/4" Inch	S19528 L/M/R
Vanity unit floorstanding 1 console, 1 furniture with doors and shelf elements laterally, 44 1/8" x 22 1/2" Inch	44 1/8" x 22 1/2" Inch	CC9533
Vanity unit floorstanding 1 console, 1 shelf below, 44 1/8" x 22 1/2" Inch	44 1/8" x 22 1/2" Inch	CC9532

All drawings contain the necessary measurements which are subject to standard tolerances. They are stated in inch & mm and are non-binding. Exact measurements, in particular for customized installation scenarios, can only be taken from the finished ceramic piece.