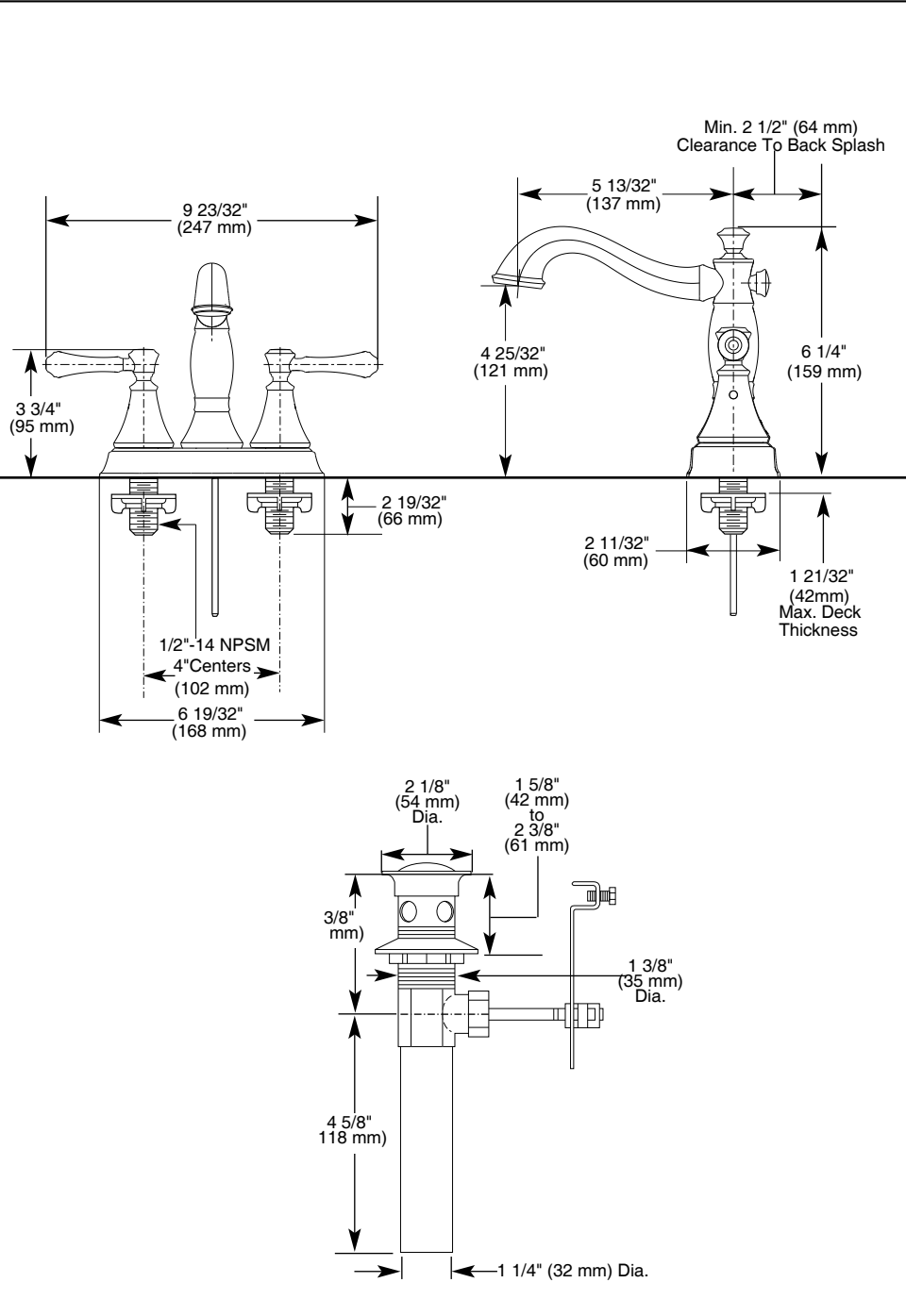


Submitted Model No.: \_\_\_\_\_

Specific Features: \_\_\_\_\_



**▲ Designate proper finish suffix**

Delta reserves the right (1) to make changes in specifications and materials, and (2) to change or discontinue models, both without notice or obligation. Dimensions are for reference only. See full-line price book or www.specselect.com for finish options and product availability.



# LAVATORY FAUCETS

- Cassidy™ Series
- Two Handle Deck Mount
- 3 Hole Sink Applications
- 4" Centerset

**STANDARD SPECIFICATIONS:**

- Solid brass fabricated body.
- 4" (102 mm) centerset.
- 5 13/32" (137 mm) long, 6 1/4" (159 mm) high rigid spout.
- 1/4 turn handle stops.
- Hot and cold stems are interchangeable.
- Control mechanism is the rotating cylinder type with stainless steel plate and 90° rotation, with replaceable non-metallic seats.
- 1/2"-14 NPSM threaded male inlet shanks.
- Models have metal drain with pop-up type fitting with plated flange and stopper.
- Maximum flow rate 1.5 gpm @ 60 PSI.

**WARRANTY**

- Lifetime Faucet and Finish Limited Warranty to the original consumer purchaser to be free from defects in material and workmanship.
- 5 Year Limited Warranty for usage in all industrial, commercial and business applications.



**COMPLIES WITH:**

- ASME A112.18.1 / CSA B125.1
- ASME A112.18.2 / CSA B125.2
- Indicates compliance to ICC/ANSI A117.1
- EPA WaterSense

Verified compliant with 0.25% weighted average Pb content regulations.

