



### GENERAL DESCRIPTION:

Exposed, sensor-operated Selectronic® Toilet Flush Valve for floor-mounted or wall-hung 1-1/2" top spud bowls. CR-P2 lithium battery powered.

### PRODUCT FEATURES:

- **Automatic Touchless Operation** limits the spread of germs
- **Factory-Installed CR-P2 Lithium Battery**
- **Patent-pending DynaClean®** wiper spring technology significantly reduces maintenance and downtime.
- **Self-cleaning** wiper spring cleans the refill orifice with every flush; prevents valve run-on from clogging
- **State-of-the-Art Electronics** prevent ghost flushing
- **Proprietary dezincification-resistant** brass alloy
- **Fully Mechanical Manual Override Button** can flush the valve without power
- **Fail-Safe:** Valve automatically closes upon loss of power or water pressure and does not need to be reset
- **Adjustable Sanitary Flush** cleans the fixture & maintains the trap seal.
- **Chemical Resistant EPDM Seals** for extended life
- **High Back Pressure Vacuum Breaker**
- **Adjustable Tailpiece**
- **Range can be adjusted manually or with optional remote control**
- **No external volume adjustment.**
- **Can be installed left or right handed**

### MODEL NUMBER:



- ❑ **6065100.002** Exposed, sensor-operated flush valve for 1-1/2" top spud flushometer bowls, 1.0 gpf / 3.8 Lpf.



- ❑ **6065111.002** Exposed, sensor-operated flush valve for 1-1/2" top spud flushometer bowls, 1.1 gpf / 4.2 Lpf.



- ❑ **6065121.002** Exposed, sensor-operated flush valve for 1-1/2" top spud flushometer bowls, 1.28 gpf / 6.0 Lpf.

- ❑ **6065161.002** Exposed, sensor-operated flush valve for 1-1/2" top spud flushometer bowls, 1.6 gpf.

Inlet includes 1" sweat solder kit and angle stop with back flow protection and vandal-resistant cap.

Outlet includes 1-1/2" high back pressure vacuum breaker with spud coupling and flange.

### OPERATING PRESSURE:

25 psi (flowing) - 80 psi (static)

### FLOW REQUIREMENT:

25 gpm (94.6 L/min.)

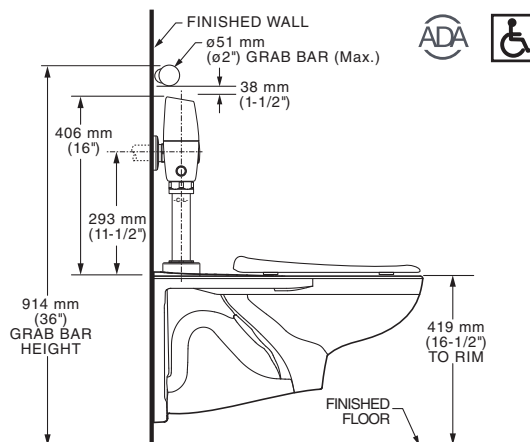
### BATTERY LIFE:

192,000 cycles (4 years at 4,000 flushes per month)

### OPTIONAL ACCESSORIES:

- Split Ring Pipe Supports 2-1/2" C-E (6065.822) & 6" C-E (6065.862)

### ADA WATER CLOSET INSTALLATION: AFWALL® TOILET SHOWN



\*\*Flush Valve can be installed to meet ADA 2010 Section 609 when installed as shown

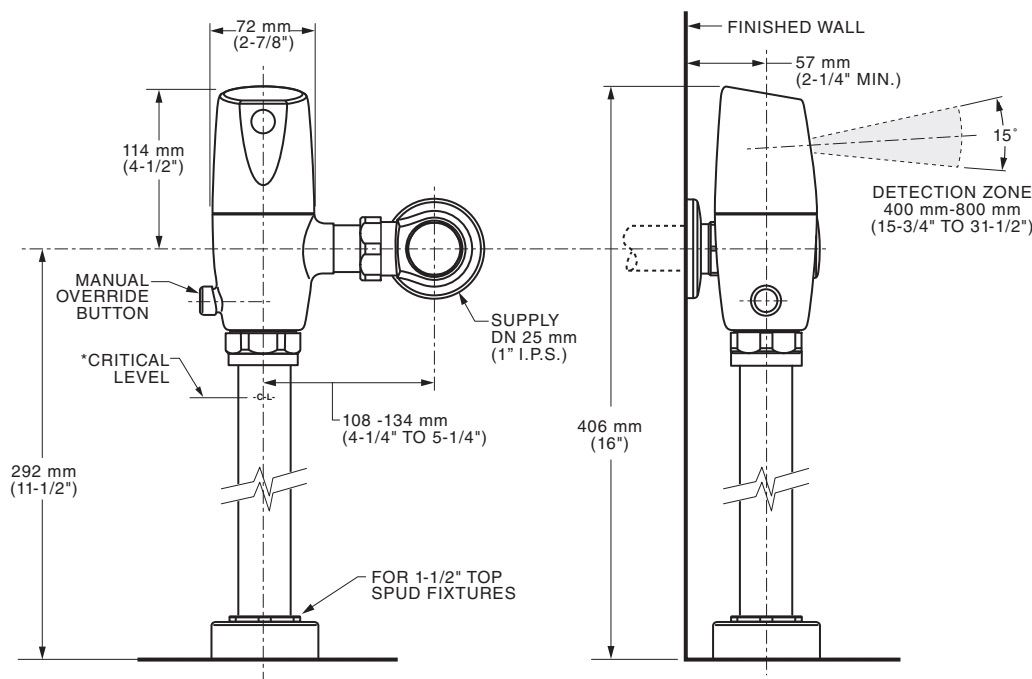
### RECOMMENDED SPECIFICATION:

Electronic, sensor activated toilet flush valve shall feature DynaClean® self-cleaning piston valve with integral wiper spring in refill orifice to prevent clogging. Includes a factory-installed CR-P2 lithium battery and fully mechanical manual override that can flush the valve without power. Includes semi-red brass valve body and metal cover with chrome finish. Includes angle stop with back-flow protection & vandal-resistant cap. Sweat solder kit and high back pressure vacuum breaker also included. 1.0 gpf/1.1 gpf/1.28 gpf/1.6 gpf flush valve shall be American Standard Model # 60651\_\_\_.002.

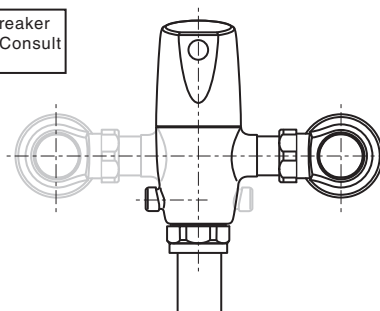
**LISTINGS:**

- ASSE 1037/ASME A112.1037/CSA B125.37
- ASME A112.19.2/CSA B45.1
- ANSI A117.1

**Roughing-in Dimensions**



\*Note: The Critical Line (-C-L-) on Vacuum Breaker must typically be 6" (152 mm) above fixture. Consult Codes for details.



**Right or Left Hand Installation**

**NOTICE:**

To ensure proper performance, this 1.0 gpf (3.8 Lpf) Toilet Flush Valve must be installed on a flushometer bowl that is certified (per ASME A112.19.2/CSA B45.1) to operate at 1.0 gpf (3.8 Lpf).



Meets B651-12 Barrier Free code. Check local codes.



Meets the American Disabilities Act Guidelines and ANSI A117.1 Requirements for the physically challenged.

American Standard®, the American Standard logo and all associated product names are exclusively owned by AS America, Inc., and are registered or unregistered trademarks in the U.S. and internationally. © 2024 AS America Inc. All rights reserved.

**PART OF LIXIL**