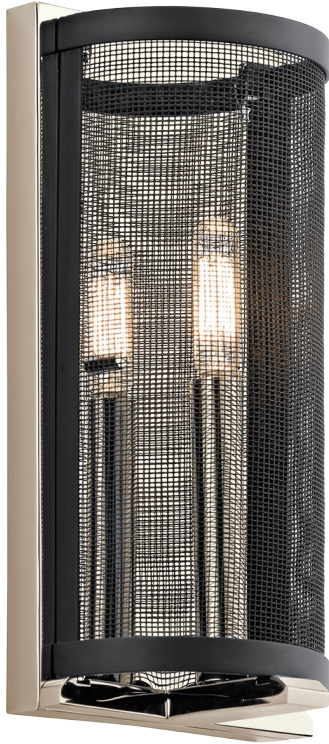


Titus Collection
Titus 1 Light Wall Sconce in Polished Nickel PN
 43716PN (Polished Nickel)

Project Name: _____
 Location: _____
 Type: _____
 Qty: _____
 Comments: _____



Ordering Information

Product ID	43716PN
Finish	Polished Nickel
Collection	Titus Collection

Dimensions

Extension	4.00"
Height from center of Wall opening	6.00"
Base Backplate	6.00 X 12.00
Weight	2.75 LBS

Specifications

Material	Steel
Shade Description	Black Steel Mesh
Shade Dimensions	5.25 DIA x 11.25

Electrical

Voltage	120V
---------	------

Qualifications

Safety Rated	Damp
Warranty	www.kichler.com/warranty

Primary Lamping

Light Source	Incandescent
Lamp Included	Not Included
Number of Lights/LEDs	1
Max or Nominal Watt	60W
Socket Wire	105
Socket Type	Candelabra
Lamp Type	B
Bulb Product ID	4064CLR

Dimensions

Height	12.00"
Width	6.00"

Alternate Lamps

Lamp Included	Bulb Listing	Light Source	Max Wattage/Range	Bulb Product ID	Dimming
No	Alternate	INCA	40W	5971CLR	