



2100 South Clearwater Drive
Des Plaines, IL 60018
Phone: 800-566-2100
Fax: 847-803-5454
www.geberitnorthamerica.com

REPAIR PARTS

FITTING NO.

151.467.XX.1

SUBMITTED MODEL NO.

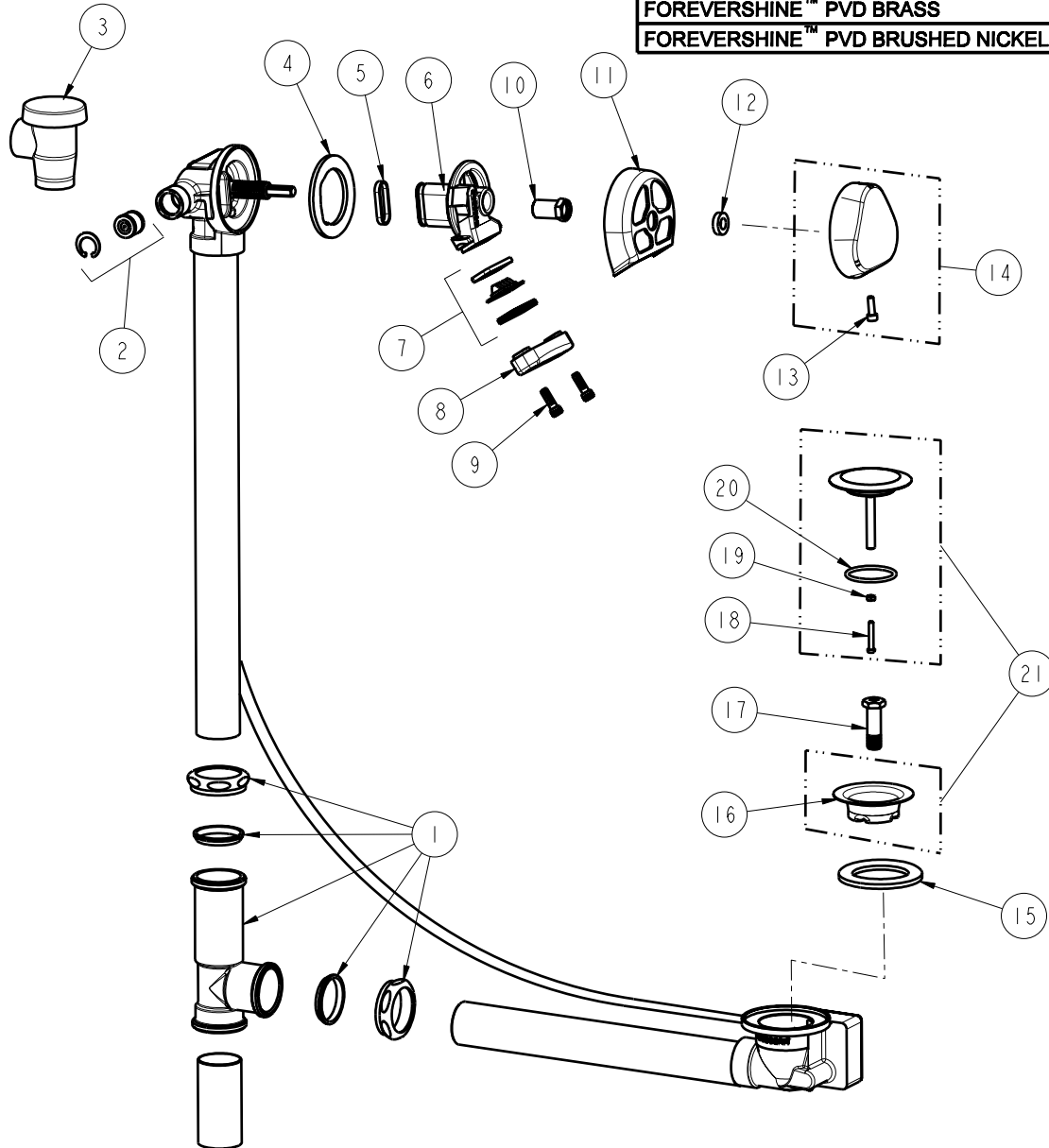
ITEM NO.

FOR TECHNICAL ASSISTANCE
1-800-TEC-TRUE (1-800-832-8783)

BY: SID DATE: 04-28-08

CHK: *[Signature]* REV:

FINISH DESCRIPTION	FINISH CODE (.XX.)
POLISHED CHROME	21
FOREVERSHINE™ PVD BRASS	GG
FOREVERSHINE™ PVD BRUSHED NICKEL	ID



ITEM	PART NO.	DESCRIPTION	ITEM	PART NO.	DESCRIPTION
1	241.632.00.1	TEE ASSEMBLY, BRASS BWO	12	241.638.00.1	WASHER, SPACER (CTF)
2	240.736.00.1	CHECK VALVE KIT	13	241.537.00.1	SCREW HEX NICKEL PLATED BRASS
3	—	VACUUM BREAKER 3/4 NPT	14	240.702.XX.1	TURN HANDLE, SOLID BRASS
4	241.633.00.1	GASKET PROFILE (CTF)	15	241.615.00.1	GASKET PROFILE EPDM 60 D73x49x7
5	241.634.00.1	SEAL (CTF)	16	241.768.00.1	STRAINER, STAINLESS STEEL
6	241.635.00.1	FAUCET HOUSING (CTF)	17	241.613.22.1	DRAIN SCREW
7	240.735.00.1	STREAM FORMER KIT	18	241.612.00.1	SCREW BRASS M4x25
8	241.639.XX.1	FAUCET OUTLET HOUSING	19	241.611.00.1	NUT HEX BRASS M4
9	241.636.00.1	SCREW SS 1/4-20 UNC x 3/4	20	241.610.00.1	O-RING NBR D39x3
10	241.621.00.1	NUT BRASS EXT	21	241.728.XX.1	PLUNGER & STRAINER BWO, METAL
11	241.637.XX.1	COVER (CTF)			