

Drake® Transitional WASHLET®+ S500e Close Coupled Toilet - 1.28 and 0.8 GPF

FEATURES

- Concealed supply connection for seamless installation
- DYNAMAX TORNADO FLUSH® utilizes 360° cleaning power to reach every part of the bowl
- High-efficiency dual flush 1.28 & 0.8 GPF (4.8 & 3.0 LPF)
- CEFIONTECT® ceramic glaze prevents debris and mold from sticking to ceramic surfaces
- Design of the bowl reduces water flow resistance resulting in a quieter flushing sound
- Universal Height
- Chrome plated trip lever
- 12" Rough-in
- Elongated front bowl and WASHLET+ S500e and tank set
- EWATER®+auto-cleans wand and bowl
- On-demand remote function cleans wand with EWATER+
- PREMIST of bowl before each use
- Remote control operated
- Auto Flush provides hands-free flush after every use
- Semi-concealed trapway



MODELS & COMPONENTS

- **MW7483046CEMFGA (#01)**
With CEFIONTECT ceramic glaze, WASHLET+ S500e with contemporary design and Auto Flush
 - **CT746CUFGT40**
Elongated bowl with CEFIONTECT
 - **ST748EMA**
Tank and cover only
 - **SW3046AT40**
WASHLET+ S500e
 - **THU765**
Auto Flush Kit
- **MW7483046CEMFG (#01)**
Same as MW7463046CEMFGA without Auto Flush
 - **CT746CUFGT40**
Elongated bowl with CEFIONTECT
 - **ST748EMA**
Tank and cover only
 - **SW3046AT40**
WASHLET+ S500e

COLORS/FINISHES

- #01 Cotton

-  **DYNAMAX TORNADO FLUSH**
-  **Universal Height**
-  **CEFIONTECT**
-  **WATER SAVING**

PRODUCT SPECIFICATION

The two-piece high-efficiency DYNAMAX TORNADO FLUSH toilet shall be dual flush 1.28 GPF/0.8 GPF. Toilet shall be 12" rough-in. Toilet shall have optional CEFIONTECT ceramic glaze and be at Universal Height. Toilet shall have elongated front bowl and chrome plated trip lever. Toilet shall be TOTO Model MW7483046CEMFG(A).

CODES/STANDARDS

- Meets and exceeds ASME A112.19.2/CSA B45.1, ASME A112.19.14
- Certifications: IAPMO(cUPC®), EPA WaterSense, State of Massachusetts, and others
- Code Compliance: UPC, IPC, NSPC, NPC Canada, and others
- Complies with CA AB715, CA Green Building Code, Los Angeles Water Efficiency Ordinance and others
- ADA compliant (when installed with trip lever located on the approach side)
- Complies with CA Prop 65 warning requirements



MW7483046CEMFG(A)

Drake® Transitional WASHLET®+ S500e Close Coupled Toilet - 1.28 and 0.8 GPF

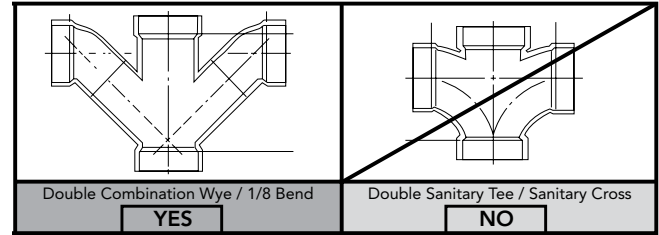
SPECIFICATIONS

Water Use	1.28 & 0.8 GPF (4.8 & 3.0 LPF)
Flush System	DYNAMAX TORNADO FLUSH®
Min. Water Pressure	8 psi (Static)
Water Surface	5-5/8" x 4-1/8"
Trap Diameter	2-1/2"
Rough-in	12"
Trap Seal	2-1/8"
Warranty	One Year Limited Warranty
Material	Vitreous China
Shipping Weight	CT746CUFGT40 66 lbs. ST748EMA 33.1 lbs. SW3046AT40 15.6 lbs. THU765 1.5 lbs.
Shipping Dimensions	CT746CUFGT40 28-1/4" L x 17-1/4" W1 x 10-3/4" W2 x 17-1/4" H ST748EMA 19-7/8" L x 9-3/8" W x 15-5/8" H SW3046AT40 23-3/4" L x 17" W x 9-1/2" H THU765 8-3/4" L x 6-3/8" W x 5-3/4" H

INSTALLATION NOTES

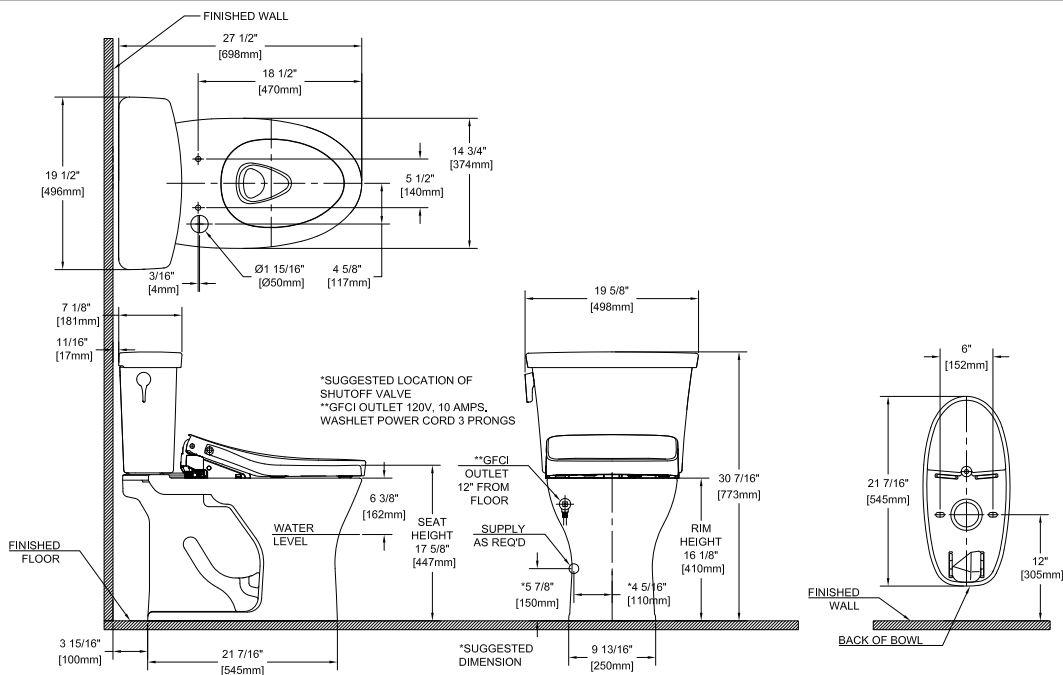
Back-to-Back Toilet Installations:

TOTO recommends the use of a nationally listed, double sanitary tee-wye only, in vertical waste stacks, in accordance with the stipulations noted in the majority of nationally recognized plumbing codes.



To maintain adequate wall gap between the back of the tank and wall, mount the floor flange at a nominal 12" rough-in distance.

DIMENSIONS



TOTO®

Fixture Dimensions shown are nominal. These dimensions and specifications are subject to change without notice.

Ph: (888) 295-8134 | Fax: (800) 699-4889 | www.totousa.com | © TOTO USA

SS-01642 v.01