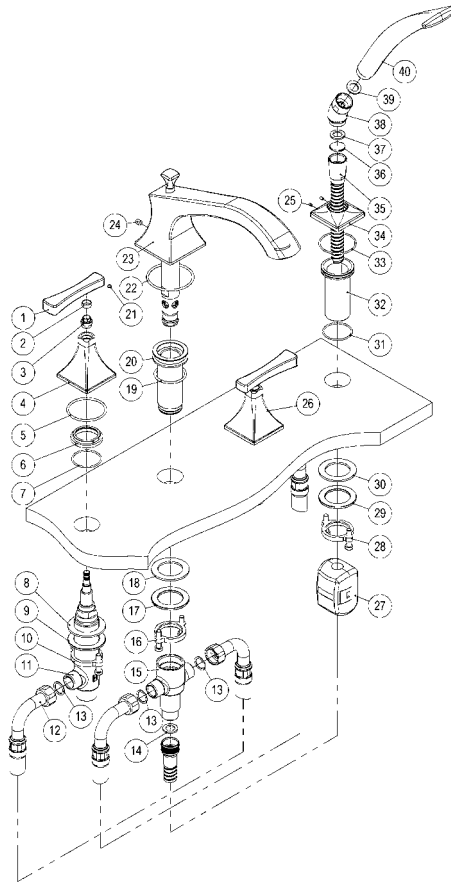
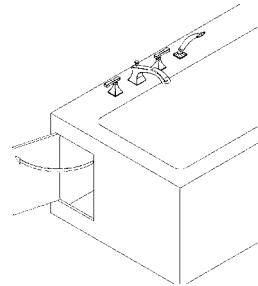


SPARE PARTS



Installation note:
For servicing after installation,
install a service door near
the valves.



1	LEVER
2	LOCKING RING SLEEVE
3	LOCKING RING NUT
4	ESCUTCHEON
5	"O" RING
6	SIDE VALVE ESCUTCHEON
7	"O" RING
8	RUBBER WASHER
9	STEEL WASHER
10	MOUNTING NUT
11	SIDE VALVE
12	G1/2"-G1/2" HOSE - 23 5/8" LONG
13	RUBBER WASHER
14	G1/2" RUBBER WASHER
15	DIVERTER BLOCK
16	MOUNTING NUT
17	STEEL WASHER
18	RUBBER WASHER
19	"O" RING
20	SPOUT BASE TAIL

21	M4 GRUB SCREW
22	"O" RING
23	BATH FILLER DECK MOUNTED SPOUT
24	1/4"-20 UNC GRUB SCREW
25	M3 GRUB SCREW
26	HANDLE ASSEMBLY
27	COUNTER WEIGHT
28	MOUNTING NUT
29	STEEL WASHER
30	RUBBER WASHER
31	"O" RING
32	HANDSET BASE TAIL
33	"O" RING
34	HANDSET ESCUTCHEON
35	2M HANDSET HOSE
36	FLOW RESTRICTOR
37	G1/2" RUBBER WASHER
38	ANGLE ELBOW
39	RUBBER WASHER
40	HANDSET